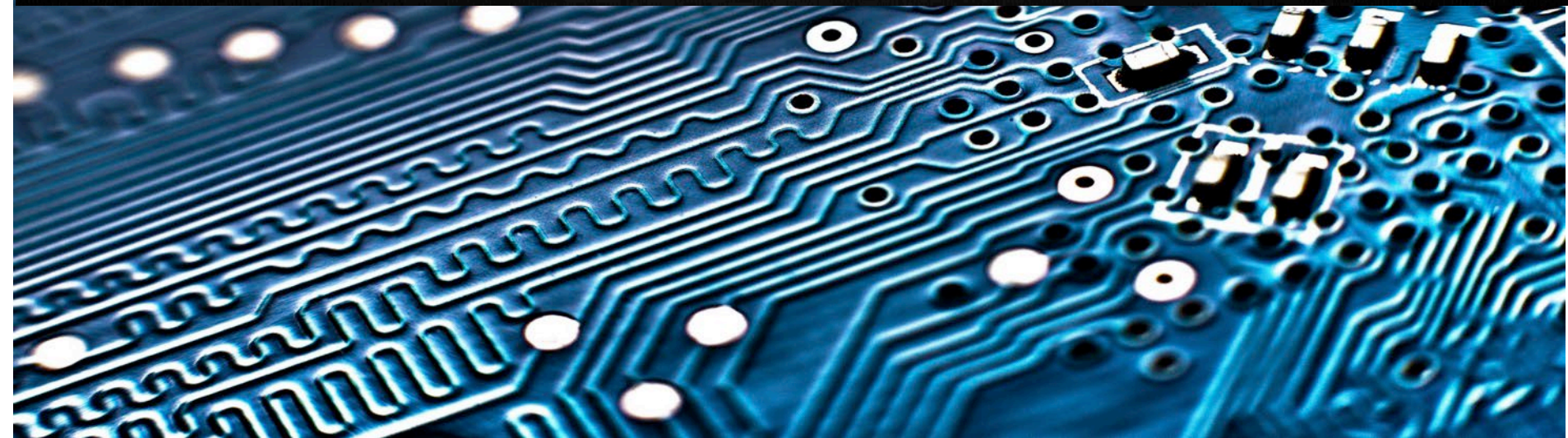


University System of Georgia Information Technology Services
Data & Reporting Services

The top right section features a light gray background with a pattern of white, stylized clouds. Below the clouds, the text "University System of Georgia Information Technology Services" is written in a small, dark blue font. Underneath that, the words "Data & Reporting Services" are displayed in a large, bold, blue font. A faint outline of the state of Georgia is visible in the background behind the text.

Academic Release Review for Fall EOT 20242



Fall End-of-Term Collection (20242)

○ Key Dates

- November 22, 2023 – Collection Opens
- December 4, 2023 – Successful extraction required
- December 20, 2023 – Census Date
- January 8, 2024 – Certification and Due Date

Items Included in Release

- Academic Release 1.16 **(Updated)**
 - Campus ETL
- Data Collections ETL 1.3
 - Data Collection Extraction process (ZADMETL)

Items Included in Release

- Collection of Course College and Department Codes and Descriptions
 - Campus ETL modifications
 - Mimic table modifications
 - Table dump report modifications
 - DED Updates
- Modifications for Banner source field size changes:
 - Source/Background Institution (SBGI) Code
 - Test Administration Type (TADM) Code

Items Included in Release

- Remediation for the collection of USG Cumulative Award Data
 - Campus ETL Modification
- Remediation for the collection of HOPE Hours Attempted
 - Campus ETL Modification
- Remediation for a Known Issue related to Faculty Teaching Percentage
 - Edits to the logic for validation VFCS005

Course College and Department

- New Data Elements
 - CRS007: Course College Code
 - SCBCRSE_COLL_CODE
 - CRS008: Course College Description
 - STV_COLL_DESC
 - CRS009: Course Department Code
 - SCBCRSE_DEPT_CODE
 - CRS010: Course Department Description
 - STVDEPT_DESC

Course College and Department

- Campus ETL / Mimic Table / Report Updates
 - ADMCRS_CATALOG_MIMIC
 - COURSE_COLLEGE_CODE
 - COURSE_COLLEGE_DESCR
 - COURSE_DEPARTMENT_CODE
 - COURSE_DEPARTMENT_DESCR

SBGI Code Field Size Change

- STVSBGI_CODE field size increased from 6 to 20 characters

Source or Background Institution *	Description *	Type *
12345678910111213141	Test Institution Code	College
1235	Northwest Technical College	College
1236	College Of New Rochelle	College

- FICE / HS Translation Application
 - Modified to allow SBGI codes longer than 6 characters to be translated

Institution Name	Street Address	City	State	ZIP Code	Begin Date	End Date	FICE Code	Translation
Massachusetts St College Sys Office	-	Boston	MA	02109	07/26/2001	-	002179	12345678910111213141



SBGI Code Field Size Change

If a SBGI Code larger than 6 characters is used:

– As a FICE Code

- You must translate it to a 6-character code on the FICE / HS Translation Application

Institution Name	Street Address	City	State	ZIP Code	Begin Date	End Date	FICE Code	Translation
Massachusetts St College Sys Office	-	Boston	MA	02109	07/26/2001	-	002179	12345678910111213141

-or-

- Cross reference it to a valid STVSBGI FICE code

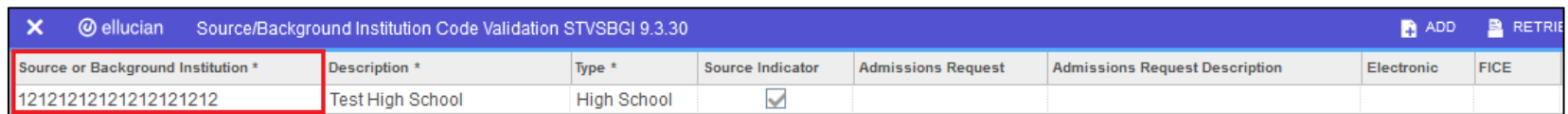
Source or Background Institution *	Description *	Type *	Source Indicator	Admissions Request	Admissions Request Description	Electronic	FICE
12345678910111213141	Test Institution Code	College	<input checked="" type="checkbox"/>				002179

If a FICE code larger than 6 characters is not translated or cross referenced, the Data Collection Extraction (ZADMETL) process will fail on step ODS_ADMSTU_TRANSFER_MIMIC.

SBGI Code Field Size Change

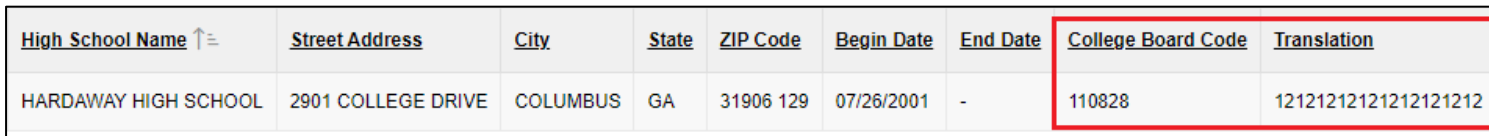
If a SBGI Code larger than 6 characters is used:

- As a College Board (High School) Code



Source or Background Institution *	Description *	Type *	Source Indicator	Admissions Request	Admissions Request Description	Electronic	FICE
12121212121212121212	Test High School	High School	<input checked="" type="checkbox"/>				

- You must translate it to a 6-character College Board code on the FICE / HS Translation Application



High School Name ↑	Street Address	City	State	ZIP Code	Begin Date	End Date	College Board Code	Translation
HARDAWAY HIGH SCHOOL	2901 COLLEGE DRIVE	COLUMBUS	GA	31906 129	07/26/2001	-	110828	12121212121212121212

If a High School Code larger than 6 characters is not translated on the FICE / HS Translation Application, only the first 6 characters of the code will be collected.

TADM Code Field Size Change

- Test Administration Type (STR002) increased from 2 to 10 characters
 - Modified Campus ETL to collect the Test Administration Type Code only when it is one of the valid Regents values:
 - LO – Local
 - NA – National
 - RE - Residual

USG Cumulative Award Data

In prior collections, multiple institutions have received error relief for the following validation rules:

- VSGC011 - USG Cumulative Hours Attempted must be greater than zero and cannot be null.
- VSGC023 - USG Cumulative GPA must be greater than zero and cannot be null.

To ensure that cumulative data is collected from the correct term and level, a filter on level code will be added to the Campus ETL logic.

HOPE Hours Attempted

In the Spring MT 20234 collection, Kennesaw State requested error relief for the following validation error:

- VSTE135: HOPE Hours Attempted cannot be null if HOPE GPA is not null.

The Campus ETL logic will be modified to add a missing filter on calculation type that prevented the HOPE attempted hours data from being collected in some cases.

Faculty Teaching Percentage

In a prior collection, Georgia State University reported concerns regarding the following validation error related to Faculty Teaching Percentages (FCS005).

- VFCS005: Faculty Teaching Percentage must not exceed 100 for any individual instructor.

The validation logic for VFCS005 will be modified to display only the course sections where the total teaching percentage is greater than 100.

Data Collections Site (NEW)

https://www.usg.edu/data_services

During Beta Testing

- DW_TEST@usg.edu

During the Collection

- Helpdesk@usg.edu



UNIVERSITY SYSTEM OF GEORGIA

Information Technology Services

