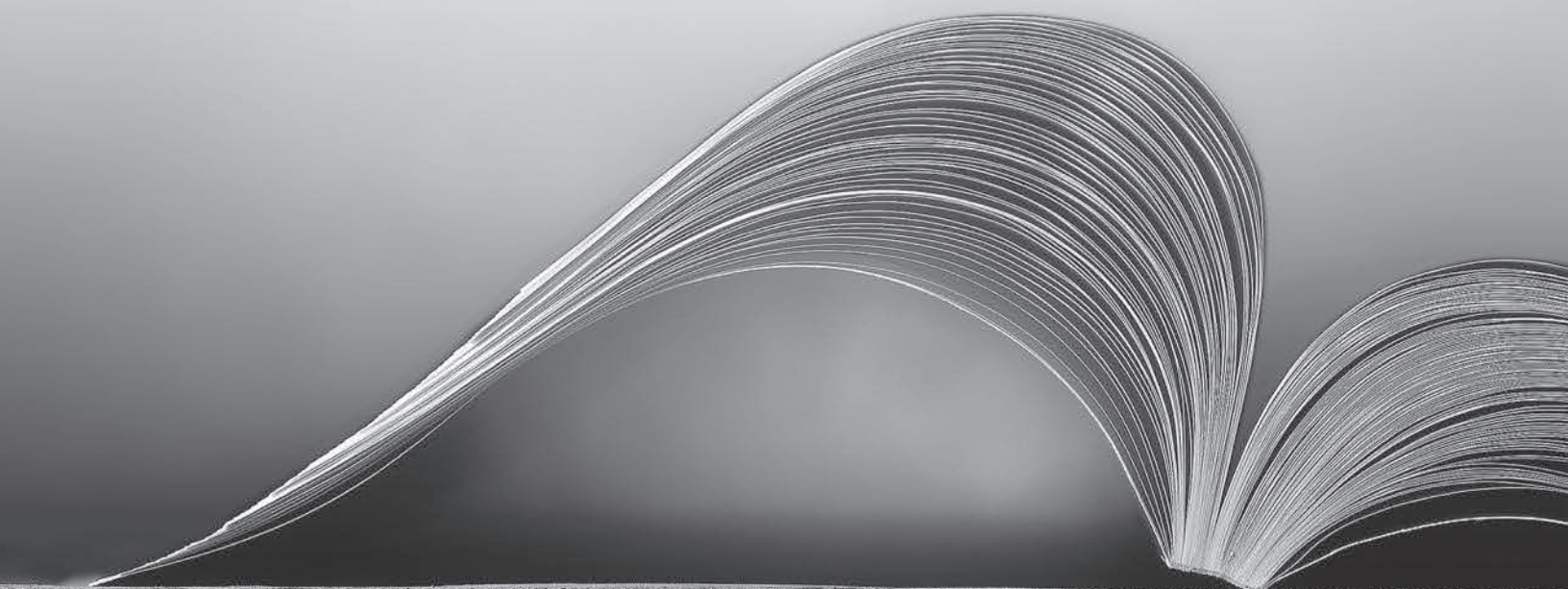


# FINANCIAL

- The total University System budget was \$4.2 billion in FY2005.
- The State of Georgia appropriated \$1.7 billion for the University System in FY2005.
- For residents of Georgia, the approximate cost of tuition for full-time students for two terms was:
  - \$3,638 at a research university,
  - \$2,438 at a regional or state university, and
  - \$1,542 at a state or two-year college.



# BUDGET SUMMARY

## Fiscal Year 2004-2005

INSTITUTION	I. GENERAL OPERATIONS			II. DEPT. SALES** AND SERVICES	III. SPONSORED OPERATIONS***	TOTAL BUDGET
	INTERNAL* REVENUE	STATE APPROPRIATIONS	TOTAL GENERAL OPERATIONS			
Georgia Institute of Technology	\$174,792,209	\$190,583,727	\$365,375,936	\$18,000,000	\$180,000,000	\$563,375,936
Georgia State University	110,457,542	181,208,056	291,665,598	15,000,000	90,000,000	396,665,598
Medical College of Georgia	25,915,195	110,493,712	136,408,907	8,642,488	363,523,019	508,574,414
University of Georgia	167,269,521	310,382,371	477,651,892	40,000,000	375,000,000	892,651,892
<b>Research University Total</b>	<b>478,434,467</b>	<b>792,667,866</b>	<b>1,271,102,333</b>	<b>81,642,488</b>	<b>1,008,523,019</b>	<b>2,361,267,840</b>
Georgia Southern University	40,538,633	72,881,391	113,420,024	3,000,000	63,000,000	179,420,024
Valdosta State University	27,483,566	42,905,512	70,389,078	522,732	7,916,192	78,828,002
<b>Regional University Total</b>	<b>68,022,199</b>	<b>115,786,903</b>	<b>183,809,102</b>	<b>3,522,732</b>	<b>70,916,192</b>	<b>258,248,026</b>
Albany State University	9,936,666	19,179,452	29,116,118	-	27,500,000	56,616,118
Armstrong Atlantic State Univ.	14,406,368	25,640,327	40,046,695	1,175,333	6,483,733	47,705,761
Augusta State University	14,093,794	23,116,098	37,209,892	585,637	5,010,192	42,805,721
Clayton State University	13,380,100	19,516,706	32,896,806	2,654,588	7,376,996	42,928,390
Columbus State University	16,524,460	28,351,333	44,875,793	1,066,025	25,954,109	71,895,927
Fort Valley State University	7,045,370	17,957,190	25,002,560	160,000	35,000,000	60,162,560
Georgia College & State Univ.	17,346,570	27,198,189	44,544,759	953,191	24,315,355	69,813,305
Georgia Southwestern State Univ.	5,484,450	11,473,477	16,957,927	1,324,000	4,957,230	23,239,157
Kennesaw State University	47,858,830	59,727,050	107,585,880	4,227,000	8,922,942	120,735,822
North Ga. College & State Univ.	11,109,111	19,454,967	30,564,078	280,000	2,724,260	33,568,338
Savannah State University	8,154,186	15,318,408	23,472,594	-	18,683,370	42,155,964
Southern Polytechnic State Univ.	10,707,241	18,618,346	29,325,587	1,450,000	9,000,000	39,775,587
University of West Georgia	23,009,536	38,806,923	61,816,459	579,661	29,309,126	91,705,246
<b>State University Total</b>	<b>199,056,682</b>	<b>324,358,466</b>	<b>523,415,148</b>	<b>14,455,435</b>	<b>205,237,313</b>	<b>743,107,896</b>
Dalton State College	5,197,000	11,204,410	16,401,410	400,000	7,750,000	24,551,410
Gainesville State College	8,008,292	12,416,958	20,425,250	300,000	1,068,768	21,794,018
Macon State College	8,058,985	16,620,280	24,679,265	484,171	5,514,708	30,678,144
<b>State College Total</b>	<b>21,264,277</b>	<b>40,241,648</b>	<b>61,505,925</b>	<b>1,184,171</b>	<b>14,333,476</b>	<b>77,023,572</b>
Abraham Baldwin Agric. College	4,862,489	11,932,216	16,794,705	184,866	7,255,666	24,235,237
Atlanta Metropolitan College	4,270,802	7,064,219	11,335,021	79,000	4,500,000	15,914,021
Bainbridge College	2,340,070	6,414,560	8,754,630	426,445	4,488,259	13,669,334
Coastal Ga. Community College	3,845,000	7,719,303	11,564,303	365,000	5,700,000	17,629,303
Darton College	5,856,934	11,791,630	17,648,564	240,000	5,500,000	23,388,564
East Georgia College	1,725,101	4,866,050	6,591,151	45,000	2,000,000	8,636,151
Georgia Highlands College	5,314,097	10,638,160	15,952,257	140,000	3,442,135	19,534,392
Georgia Perimeter College	35,588,810	51,776,409	87,365,219	3,200,000	17,500,000	108,065,219
Gordon College	4,672,767	10,018,432	14,691,199	45,000	4,500,000	19,236,199
Middle Georgia College	4,216,273	9,641,302	13,857,575	15,000	3,556,745	17,429,320
South Georgia College	2,517,895	5,521,103	8,038,998	425,000	2,901,559	11,365,557
Waycross College	1,164,100	3,166,792	4,330,892	25,000	1,199,524	5,555,416
<b>Two-Year College Total</b>	<b>76,374,338</b>	<b>140,550,176</b>	<b>216,924,514</b>	<b>5,190,311</b>	<b>62,543,888</b>	<b>284,658,713</b>
Gwinnett University Center		5,547,277	5,547,277	-	-	5,547,277
Information/Instruction Technology		32,663,983	32,663,983	13,182,753	-	45,846,736
Resident Instruction and Other Reserve		5,000,000	5,000,000	-	-	5,000,000
<b>TOTAL TEACHING INSTITUTIONS</b>	<b>843,151,963</b>	<b>1,456,816,319</b>	<b>2,299,968,282</b>	<b>119,177,890</b>	<b>1,361,553,888</b>	<b>3,780,700,060</b>
<b>TOTAL ACTIVITIES OTHER THAN TEACHING+</b>	<b>77,597,654</b>	<b>203,109,188</b>	<b>280,706,842</b>	<b>9,161,113</b>	<b>144,266,852</b>	<b>434,134,807</b>
<b>TOTAL UNIVERSITY SYSTEM BUDGET</b>	<b>\$920,749,617</b>	<b>\$1,659,925,507</b>	<b>\$2,580,675,124</b>	<b>\$128,339,003</b>	<b>\$1,505,820,740</b>	<b>\$4,214,834,867</b>

+ Activities other than teaching include experiment stations, extension services, teaching hospitals, marine programs, Regents' System Office, Advanced Technology Development Center, and payments to non-University System institutions (e.g., private medical schools).

\* Internal Revenue consists of student tuition, fees, gifts, grants, and miscellaneous other revenues.

\*\* Departmental Sales and Services are revenues used for support of special programs not included in General Operations.

\*\*\* Sponsored Operations are funds restricted to a specific use, primarily research and student aid.

Source: Budget, 2004-2005



# AMENDED BUDGET

## FY2005

The original state appropriation of \$1.66 billion in FY2005 was amended to \$1.68 billion, an increase of \$20 million from the original budget.

INSTITUTION	ORIGINAL STATE APPROPRIATION	AMENDED STATE APPROPRIATION
Georgia Institute of Technology	\$ 190,583,727	\$ 198,997,047
Georgia State University	181,208,056	181,227,037
Medical College of Georgia	110,493,712	113,576,628
University of Georgia	310,382,371	317,565,649
<b><i>Research University Total</i></b>	<b><i>792,667,866</i></b>	<b><i>811,366,361</i></b>
Georgia Southern University	72,881,391	74,346,203
Valdosta State University	42,905,512	43,635,060
<b><i>Regional University Total</i></b>	<b><i>115,786,903</i></b>	<b><i>117,981,263</i></b>
Albany State University	19,179,452	19,579,723
Armstrong Atlantic State University	25,640,327	25,763,162
Augusta State University	23,116,098	23,679,104
Clayton State University	19,516,706	19,997,461
Columbus State University	28,351,333	28,682,769
Fort Valley State University	17,957,190	18,846,293
Georgia College & State University	27,198,189	28,076,238
Georgia Southwestern State University	11,473,477	12,065,050
Kennesaw State University	59,727,050	60,985,853
North Ga. College & State University	19,454,967	19,891,781
Savannah State University	15,318,408	15,716,822
Southern Polytechnic State University	18,618,346	19,148,886
University of West Georgia	38,806,923	39,360,357
<b><i>State University Total</i></b>	<b><i>324,358,466</i></b>	<b><i>331,793,499</i></b>
Dalton State College	11,204,410	11,371,508
Gainesville State College	12,416,958	12,658,689
Macon State College	16,620,280	16,152,544
<b><i>State College Total</i></b>	<b><i>40,241,648</i></b>	<b><i>40,182,741</i></b>
Abraham Baldwin Agric. College	11,932,216	12,072,531
Atlanta Metropolitan College	7,064,219	7,270,671
Bainbridge College	6,414,560	6,478,059
Coastal Ga. Community College	7,719,303	7,845,060
Darton College	11,791,630	12,049,705
East Georgia College	4,866,050	52,583,089
Georgia Highlands College	10,638,160	4,938,769
Georgia Perimeter College	51,776,409	10,834,130
Gordon College	10,018,432	10,103,609
Middle Georgia College	9,641,302	10,174,430
South Georgia College	5,521,103	5,594,914
Waycross College	3,166,792	3,220,102
<b><i>Two-Year College Total</i></b>	<b><i>140,550,176</i></b>	<b><i>143,165,069</i></b>
Gwinnett University Center	5,547,277	5,355,448
Information/Instruction Technology	32,663,983	34,402,600
Resident Instruction and Other Reserve	5,000,000	--
<b>TOTAL TEACHING INSTITUTION</b>	<b>\$1,456,816,319</b>	<b>\$1,484,246,981</b>
<b>TOTAL ACTIVITIES OTHER THAN TEACHING</b>	<b>\$ 203,109,188</b>	<b>\$ 195,653,488</b>
<b>TOTAL UNIVERSITY SYSTEM BUDGET</b>	<b>\$1,659,925,507</b>	<b>\$1,679,900,469</b>

Source: Budget, 2004-2005

## REVENUES

### By Source, FY2003 - FY2005

	FY2003	FY2004	FY2005
OPERATING REVENUE			
Tuition and Fees	\$ 570,298,082	\$ 666,308,629	\$ 695,664,180
Grants and Contracts	1,208,587,381	1,289,015,301	1,221,599,455
Sales and Services of Educational Departments	51,596,502	56,855,339	105,786,007
Auxiliary	335,192,256	366,766,669	391,461,436
Other	328,646,898	314,244,681	410,645,576
<b>TOTAL OPERATING REVENUE</b>	<b>2,494,321,119</b>	<b>2,693,190,618</b>	<b>2,825,156,654</b>
NONOPERATING REVENUE			
State Appropriations	1,665,129,791	1,631,312,366	1,676,360,955
Grants and Contracts	9,684,629	72,393,187	61,806,941
Gifts	16,588,225	18,658,572	54,754,441
Investment and Income	55,866,901	14,544,807	22,855,806
Other	(10,618,148)	13,458,376	8,173,143
<b>TOTAL NON-OPERATING REVENUE</b>	<b>1,736,651,398</b>	<b>1,750,371,307</b>	<b>1,823,951,286</b>
CAPITAL GIFTS AND GRANTS			
State Capital Appropriations	129,674,713	218,922,737	276,013,806
Other Capital Gifts and Grants	71,287,152	78,111,582	25,239,702
<b>TOTAL CAPITAL GIFTS AND GRANTS</b>	<b>200,961,864</b>	<b>297,034,319</b>	<b>301,253,507</b>
<b>TOTAL REVENUES</b>	<b>\$4,431,934,382</b>	<b>\$4,740,596,245</b>	<b>\$4,950,361,447</b>

## EXPENDITURES

### By Functional Classification, FY2003 - FY2005

	FY2003	FY2004	FY2005
OPERATING EXPENSES			
Instruction	\$1,106,544,962	\$1,129,340,561	\$1,323,314,196
Research	683,416,861	710,217,777	724,674,719
Public Service	417,577,218	376,776,831	381,049,886
Academic Support	301,107,124	316,655,539	325,414,902
Student Services	156,265,948	165,850,571	173,525,171
Institutional Support	656,951,921	635,405,559	638,303,117
Plant Operations and Maintenance	310,099,023	305,780,936	350,471,826
Scholarships and Fellowships	260,566,766	245,049,724	143,593,841
Auxiliary Enterprises	299,624,127	322,302,735	365,456,631
Unallocated Expenses	30,871,288	65,797,299	65,781,126
Patient Care (MCG only)	153,572,842	158,599,516	172,188,081
<b>TOTAL OPERATING EXPENSES</b>	<b>4,376,598,080</b>	<b>4,431,777,048</b>	<b>4,663,773,494</b>
NONOPERATING EXPENSES			
Interest Expense (Capital Assets)	6,599,185	22,892,487	35,373,694
<b>TOTAL EXPENSES</b>	<b>\$4,383,197,265</b>	<b>\$4,454,669,536</b>	<b>\$4,699,147,189</b>

Source: Annual Financial Reports, Office of Vice Chancellor for Fiscal Affairs

# STATE OF GEORGIA APPROPRIATIONS

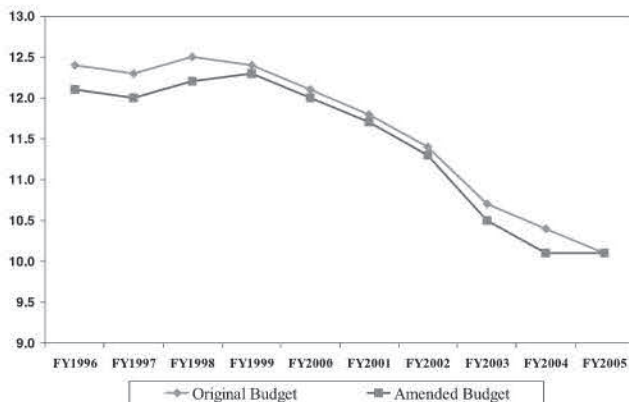
## Amount Allocated, FY1983-FY2005

### AMOUNT APPROPRIATED IN MILLIONS

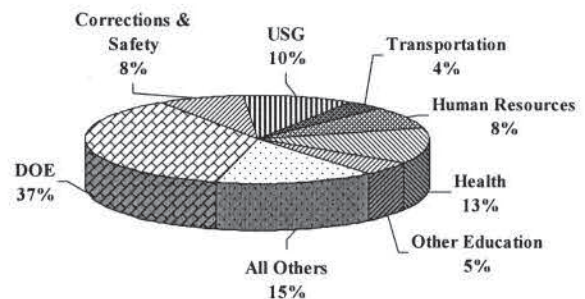
FISCAL YEAR	ORIGINAL BUDGET			AMENDED BUDGET		
	STATE	REGENTS*	%	STATE	REGENTS	%
1983	3,746.7	553.0	14.8	3,685.5	540.9	14.7
1984	4,018.0	590.6	14.7	3,960.8	579.4	14.6
1985	4,302.0	631.9	14.7	4,364.8	634.6	14.5
1986	4,838.0	585.8	12.1	5,225.9	686.6	13.1
1987	5,316.0	734.1	13.8	5,412.8	731.3	13.5
1988	5,782.0	780.1	13.5	5,946.1	780.3	13.1
1989	6,254.0	819.2	13.1	6,405.1	819.2	12.8
1990	7,498.0	913.8	12.2	7,646.0	913.3	11.9
1991	7,785.4	961.5	12.4	7,667.7	913.4	11.9
1992	7,955.5	952.1	12.0	7,552.9	874.5	11.6
1993	8,264.1	951.8	11.5	8,252.2	941.4	11.4
1994	8,976.6	1,055.3	11.8	9,192.0	1,061.3	11.5
1995	9,785.3	1,183.9	12.1	10,236.1	1,274.6	12.5
1996	10,691.3	1,328.4	12.4	10,980.4	1,362.2	12.1
1997	11,341.2	1,391.7	12.3	11,793.3	1,420.4	12.0
1998	11,771.7	1,465.3	12.5	12,533.2	1,523.2	12.2
1999	12,525.3	1,558.4	12.4	13,233.5	1,620.9	12.3
2000	13,291.0	1,607.9	12.1	14,152.9	1,698.9	12.0
2001	14,468.6	1,713.5	11.8	15,741.1	1,839.2	11.7
2002	15,485.6	1,762.6	11.4	15,825.4	1,794.0	11.3
2003	16,106.0	1,730.9	10.7	16,142.8	1,693.7	10.5
2004	16,174.7	1,674.9	10.4	16,079.2	1,630.0	10.1
2005	16,376.1	1,658.4	10.1	16,567.5	1,676.3	10.1

\* The totals do not match those on other tables. The amounts listed here include Georgia Public Telecommunications Commission funds but do not include Governor's Emergency Funds.

Percent of State Budget  
University System of Georgia  
FY1996-FY2005



State Appropriations, FY2005  
Amended Base Budget of \$16,567 Million



Source: "How State Dollars Are Spent." *Budget in Brief*, FY1983-FY2005, Office of Planning and Budget



# FUNDING FORMULA

---

The University System operates under a formula funding system developed in 1982 and implemented in the FY1984 budget request. The first full funding of the formula was in FY1987.

The formula is a mathematical device that aggregates the funding needs of all institutions to provide a continuous level of support for the Resident Instruction activity of the University System. The formula is used by: 1) the Board of Regents to request Resident Instruction funds from the State of Georgia; 2) the Governor to recommend Resident Instruction funding to the Legislature; and 3) the Legislature to appropriate State funds for Resident Instruction to the Board of Regents. The formula is not used to allocate money to the various institutions.

An array of workload variables is applied to a set of constants to determine Resident Instruction funding needs. Student workload, expressed in terms of credit hours, directly or indirectly generates about 87 percent of the total budget. Operation and maintenance costs of the physical plant account for another 11 percent of the budget, and 2 percent is generated through other organized activities. Thus, the formula is student-driven. The workload variables and constants are described below.

## I. INSTRUCTION AND RESEARCH

- A. **Instruction.** The formula for instruction is based on credit hours generated in three instructional levels (lower, upper, and graduate/professional) and three broad program groups (1-3), plus special program groups for learning support (4) and medicine (5).

Group 1. Law, Letters, Library Science, Psychology, and Social Sciences

Group 2. Area Studies, Business, Communications, Education, Home Economics, Mathematics, Public Affairs, and Interdisciplinary Studies

Group 3. Agriculture, Architecture, Biological Sciences, Computer Science, Engineering, Fine and Applied Arts, Foreign Languages, Health Professions, Physical Sciences, and Technologies

Group 4. Learning Support Programs

Group 5. Medicine, Dentistry, Veterinary Medicine

Total instruction expenditures = academic salary expenditures + instructional support position expenditures + instructional operating expense expenditures

- B. **Research.** Funding for research is based on an amount equivalent to total graduate instruction expenditures



**TOTAL FUNDING BASE:** Sum of A and B  
(Instruction, Research)

- II. **ACADEMIC SUPPORT.** 17.4 percent X Total Funding Base = Academic Support Expenditures

- III. **STUDENT SERVICES AND INSTITUTIONAL SUPPORT.** 23.1 percent X Total Funding Base = Student Services and Institutional Support Expenditures

## IV. OPERATION AND MAINTENANCE OF PLANT

**Regular Operations.** Number of square feet of building space X cost per square foot = Expenditures for Operation and Maintenance of Physical Plant (in FY2005 budget: 42,543,672 square feet at \$4.7472 per square foot)

**Utilities.** Number of square feet (as listed above) X cost of utilities per square foot (\$1.6828 in FY06)= Expenditures for utilities

## FUNDING FORMULA

---

(Continued)

- V. **FRINGE BENEFITS.** Projected actual needs for benefits such as FICA, health and life insurance, workers' compensation, etc.

**Teachers' Retirement**

- VI. **PUBLIC SERVICE AND COMMUNITY EDUCATION.** A basic amount is funded for each institution to support a campus coordinator and one support position. Separately organized institutes are specially funded.

**Public Service Institutes**

**Community Education.** Funding is based on the number of Continuing Education Units produced times a dollar rate

**Campus Coordinators.** One professional and one support position per institution

**Minority Education Program**

- VII. **TECHNOLOGY ENHANCEMENT PROGRAM**



**TOTAL FORMULA REQUIREMENT:**  
Total of all above expenditures (sum of I through VII)

**LESS REVENUE**

**Student Tuition and Fees.** Generally set at 25 percent of the total requirement, excluding Public Service and Community Education, Research, MRR, and Desegregation Programs

**Graduate Assistant Fee Reduction**

**Other Revenue**



**STATE APPROPRIATION REQUEST = Total Formula Requirement Minus Revenue**

Source: Formula for Excellence: Financing Georgia's University System in the 1980's (1982); Office of the Vice Chancellor for Fiscal Affairs

# STUDENT TUITION

## FY2006

Tuition is payment required for credit-based instruction and related services and is charged to all students. Tuition for both undergraduate and graduate students is charged at the full rate for students enrolled for 12 credit hours or more and at a per credit hour rate for students enrolled for fewer than 12 credit hours. Distance education courses may be charged on a per credit hour basis. In-state tuition is paid by Georgia residents at about 25 percent of the total General Operations revenue in the Resident Instruction Budget; out-of-state residents pay at a rate that is at least four times the tuition rate charged to Georgia residents. The tuition rate for all University System graduate programs is at least 20 percent higher than the base tuition rate for undergraduate programs. Tuition rates for all University System of Georgia institutions and programs must be approved annually by the Board of Regents. The Board has approved differential tuition rates for nationally competitive graduate and professional programs.

### IN-STATE TUITION AND OUT-OF-STATE TUITION

	FY2006			
	(EFFECTIVE FALL SEMESTER, 2005)			
	IN-STATE TUITION		OUT-OF-STATE TUITION	
<u>Universities</u>				
Georgia Institute of Technology				
Full-Time Undergraduate	\$ 1,819	Semester	\$ 8,990	Semester
Students with Fewer than 12 SCH	\$ 152	Per SCH	\$ 750	Per SCH
Full-Time Graduate	\$ 2,184	Semester	\$ 9,148	Semester
Students with Fewer than 12 SCH	\$ 182	Per SCH	\$ 763	Per SCH
Georgia State University				
Full-Time Undergraduate	\$ 1,819	Semester	\$ 7,276	Semester
Students with Fewer than 12 SCH	\$ 152	Per SCH	\$ 607	Per SCH
Full-Time Graduate	\$ 2,184	Semester	\$ 8,732	Semester
Students with Fewer than 12 SCH	\$ 182	Per SCH	\$ 728	Per SCH
Medical College of Georgia				
Full-Time Undergraduate	\$ 1,819	Semester	\$ 7,276	Semester
Students with Fewer than 12 SCH	\$ 152	Per SCH	\$ 607	Per SCH
Full-Time Graduate	\$ 2,184	Semester	\$ 8,732	Semester
Students with Fewer than 12 SCH	\$ 182	Per SCH	\$ 728	Per SCH
University of Georgia				
Full-Time Undergraduate	\$ 1,819	Semester	\$ 7,929	Semester
Students with Fewer than 12 SCH	\$ 152	Per SCH	\$ 661	Per SCH
Full-Time Graduate	\$ 2,184	Semester	\$ 9,384	Semester
Students with Fewer than 12 SCH	\$ 182	Per SCH	\$ 782	Per SCH
<u>Regional and State Universities</u>				
Full-Time Undergraduate	\$ 1,219	Semester	\$ 4,877	Semester
Students with Fewer than 12 SCH	\$ 102	Per SCH	\$ 407	Per SCH
Full-Time Graduate	\$ 1,463	Semester	\$ 5,852	Semester
Students with Fewer than 12 SCH	\$ 122	Per SCH	\$ 488	Per SCH



## STUDENT TUITION

(Continued)

Georgia College & State University					
Full-Time Undergraduate	\$ 1,702	Semester		\$ 6,808	Semester
Students with Fewer than 12 SCH	\$ 142	Per SCH		\$ 568	Per SCH
Full-Time Graduate	\$ 2,042	Semester		\$ 8,169	Semester
Students with Fewer than 12 SCH	\$ 171	Per SCH		\$ 681	Per SCH
Southern Polytechnic State University					
Full-Time Undergraduate	\$ 1,311	Semester		\$ 5,243	Semester
Students with Fewer than 12 SCH	\$ 110	Per SCH		\$ 437	Per SCH
Full-Time Graduate	\$ 1,572	Semester		\$ 6,291	Semester
Students with Fewer than 12 SCH	\$ 131	Per SCH		\$ 525	Per SCH
<u>State Colleges</u>					
Upper Division	\$ 102	Per SCH		\$ 407	Per SCH
Lower Division	\$ 65	Per SCH		\$ 257	Per SCH
<u>Two-Year Colleges</u>					
Full Time	\$ 771	Semester		\$ 3,083	Semester
Students with Fewer than 12 SCH	\$ 65	Per SCH		\$ 257	Semester
<u>Graduate Teaching &amp; Research Assistants</u>					
All Institutions	\$ 25	Semester		—	

### PERCENTAGE INCREASE IN TUITION: FY1983 - FY2006

FY1983	15.0%	FY1993	4.0%	FY2002	5% Research Univ., 3% State Univ., and 0% for all others
FY1984	15.0%	FY1994	3.0%		
FY1985	15.0%	FY1995	3.0%	FY2003	6% Research Univ. and 4% all others
FY1986	12.5%	FY1996	5.0%	FY2004	15% Research Univ., 10 % Regional and State Univ., 5% State and Two-Year Colleges
FY1987	8.5%	FY1997	6.0%		
FY1988	5.7%	FY1998	6.0%	FY2005	5.0%
FY1989	4.0%	FY1999	3.0%	FY2006	8% Research Univ., 5% Regional, State Univ., State and Two-Year Colleges
FY1990	4.4%	FY2000	4.5%		
FY1991	4.0%	FY2001	3.8%		
FY1992	4.0%				

Note: SCH is semester credit hour.

Sources: Policy Manual; Office of Vice Chancellor for Fiscal Affairs

# MANDATORY FEES

## FY2006

Mandatory fees are defined as those which are paid by all students each semester. Mandatory fees include student activity fees, intercollegiate athletic fees, student health service fees, and technology fees. "Other" below includes transportation or parking fees (if the latter are charged to all students), recreation fees, and any other mandated fees. Elective fees are those paid by only those students using a particular service, such as housing fees for students living in institutional residential facilities, food service fees, non-mandatory parking fees, laboratory fees, post office box rentals, or course fees.

INSTITUTION	SEMESTER FEES							
	MANDATORY					OPTIONAL		
	ACTIVITY	ATHLETIC	TECH- NOLOGY	OTHER	TOTAL	MEALS*	HOUSING HIGH      LOW	
Georgia Institute of Technology	113	60	100	232	505		2,770	643
Georgia State University	57	102	75	179	413		4,658	2,954
Medical College of Georgia	38		75	18	293		1,914	701
University of Georgia	55	53	75	312	495		2,631	415
Georgia Southern University	88	13	57	236	512	1,166	1,970	1,340
Valdosta State University	109	110	38	163	420	1,310	1,422	1,344
Albany State University	46	156	43	47	292	1,052	980	366
Armstrong Atlantic State Univ.	41	119	40	43	243			
Augusta State University	40	115	38	48	241			
Clayton State University	50	115	50	45	262			
Columbus State University	50	122	38	43	253		2,600	795
Fort Valley State University	59	138	38	68	303	1,148	1,283	1,100
Georgia College & State Univ.	99	129	42	99	369			
Georgia Southwestern State Univ.	60	110	40	89	299	1,095	2,160	1,310
Kennesaw State University	37	99	38	129	303			
North Ga. College & State Univ.	60	98	45	100	303	1,152	1,555	1,146
Savannah State University	41	173	35	60	309		1,268	1,068
Southern Polytechnic State Univ.	92	86	75	23	276	1,140		
University of West Georgia	45	131	50	190	416		900	
Dalton State College	21		36	5	62			
Gainesville State College	42		30		72			
Macon State College	44		50		94			
Abraham Baldwin Agric. College	45	69	38	90	242			
Atlanta Metropolitan College	35	45	35		115			
Bainbridge College	38		24		62			
Coastal Georgia Comm. College	30	38	38		106			
Darton College	42	60	48		150			
East Georgia College	28		35	3	66			
Georgia Highlands College	30		50	19	99			
Georgia Perimeter College	45	27	50	18	140			
Gordon College	32	38	40		100	975	2,100	960
Middle Georgia College	42	72	38	60	212	1,125	1,600	975
South Georgia College	35	66	38		139	870	1,780	1,275
Waycross College	35		38	4	77			

\* The cost of meals is based on 19-21 meals per week.

Source: Office of Vice Chancellor for Fiscal Affairs