



## Overview of HOPE Scholarship Recipients in the University System of Georgia

### Introduction

For the past decade, the state of Georgia has been making headlines with the inception of the most generous merit-based student aid program in the nation, the HOPE (Helping Outstanding Pupils Educationally) Scholarship Program. The HOPE Scholarship is funded entirely by proceeds from the Georgia Lottery Corporation.<sup>1</sup> Having attended college on the G.I. Bill, then-Governor Zell Miller wanted to institute an incentive program within the state of Georgia that would expand access to postsecondary education and encourage students to attend in-state institutions. Clearly, the number of Georgia residents benefiting from the HOPE Scholarship speaks to the success of the program. From September 1993 through August 2003, \$1,183,468,377 in merit-based aid was awarded to 324,921 University System of Georgia (USG) students, with funding exclusively from the Georgia Lottery.<sup>2</sup>

The Georgia Lottery posted \$2.6 billion in sales over the last twelve months, translating into a six percent increase from the previous year. This revenue stream equates to \$750 million from lottery sales allocated to support educational programs in the state of Georgia.<sup>3</sup> Despite these robust figures, it is projected that lottery revenues will one day be inadequate to fund the HOPE Scholarship Program. Based on current estimates by Georgia's Office of Planning and Budget, reserve accounts contain \$203 million, but the state would need \$972 million to fund the lottery-supported educational programs by 2007.<sup>4</sup>

Presently, a twenty-member Commission, comprised of lawmakers, state officials, parents, students, and educators, is convening to ensure HOPE's future funding.<sup>5</sup> The Commission, co-chaired by Senate Higher Education Chairman Bill Hamrick (R-Douglasville) and House Higher Education Chairwoman Louise McBee (D-Athens), plans to meet monthly through November

---

<sup>1</sup> The Georgia Lottery Corporation is legally required to allocate 35 percent of its lottery revenues to education and 51 percent of its revenues to players in winnings. The remaining 14 percent is split between retailers and operating expenses.

<sup>2</sup> Source: Georgia Student Finance Commission (GSFC). Retrieved August 18, 2003 from [http://www.gsfc.org/Hope/dsp\\_hopefaq.cfm](http://www.gsfc.org/Hope/dsp_hopefaq.cfm).

<sup>3</sup> Georgia Code (O.C.G.A. 50-27) specifies that lottery receipts be used for "educational purposes and programs" only, defined as postsecondary tuition scholarships and grants; construction of educational facilities; technology of educational facilities; and pre-kindergarten for four-year-olds.

<sup>4</sup> "HOPE faces money crunch." (2003, July 31). *The Atlanta Journal-Constitution* [Electronic version]. Retrieved from <http://www.ajc.com/metro/content/metro/0703/31hope.html>

<sup>5</sup> The HOPE Program includes various programs. The HOPE Scholarship covers tuition, mandatory fees and a book allowance for all Georgia resident students graduating high school with a 3.0 GPA. Students must maintain a 3.0 GPA at various checkpoints in order to remain eligible for the scholarship. The HOPE Grant program provides tuition, fees and a book allowance for students pursuing certificate programs at institutions of the Department of Technical and Adult Education, the University System of Georgia, and private colleges. The HOPE GED program provides a one-time \$500 grant to recent GED recipients toward their first year of postsecondary study. The PROMISE Teacher Scholarship and Georgia HOPE Teacher Scholarship provide service-cancelable loans to undergraduate and graduate students pursuing teacher education degrees. The PROMISE II Teacher Scholarship is a service-cancelable loan designed to assist teacher aids and paraprofessionals in pursuing the baccalaureate degree in education.

2003. While the Commission's recommendations will not be presented until the General Assembly members meet collectively in January 2004, some lawmakers have already offered suggestions to curtail HOPE Scholarship expenditures such as adopting more rigorous academic eligibility standards, reducing/eliminating monetary awards for student books and fees, and/or re-instituting income caps for eligibility.<sup>6</sup>

Any changes to the HOPE Scholarship Program will be of great interest to the USG, especially at a time when many institutions are experiencing burgeoning enrollments. As such, the System Office of Strategic Research and Analysis is preparing a series of reports describing the HOPE Scholarship Program as it relates to USG students.<sup>7</sup>

### **System-Wide Trends of First-Time Freshmen**

Since the inception of HOPE, both the number and proportion of first-time freshmen receiving HOPE has increased. In Fall 2001, 78.8 percent of first-time freshmen received HOPE in their first term. The proportion of USG freshmen receiving the HOPE Scholarship has varied to some extent since 1996.<sup>8</sup> However, the longitudinal trend has been similar across institutional sectors (see Figure 1). With the exception of research universities, all institutional sectors experienced a slight decline in the number of HOPE Scholars for the Class of 2000. This decline is attributable to Georgia Student Finance Commission's adoption of a standard core of courses included in grade point average calculations.<sup>9</sup> System-wide, there were approximately 4,000 more first-time freshmen HOPE Scholars in Fall 2001 than in Fall 1996, reflecting a 23 percent increase<sup>10</sup> (see Appendix).

---

<sup>6</sup> In 1993, the HOPE Scholarship Program had a family income cap of \$66,000. The cap was raised to \$100,000 in 1994. By 1995, all income caps were removed.

<sup>7</sup> USG HOPE Scholarship reports focus on the HOPE-eligible population. An eligible student is one who, based on SIRS (Student Information Reporting System) data, graduated from a Georgia High School in 1993 or later or someone who, according to GSFC data, received the HOPE Scholarship in their first semester at a USG institution.

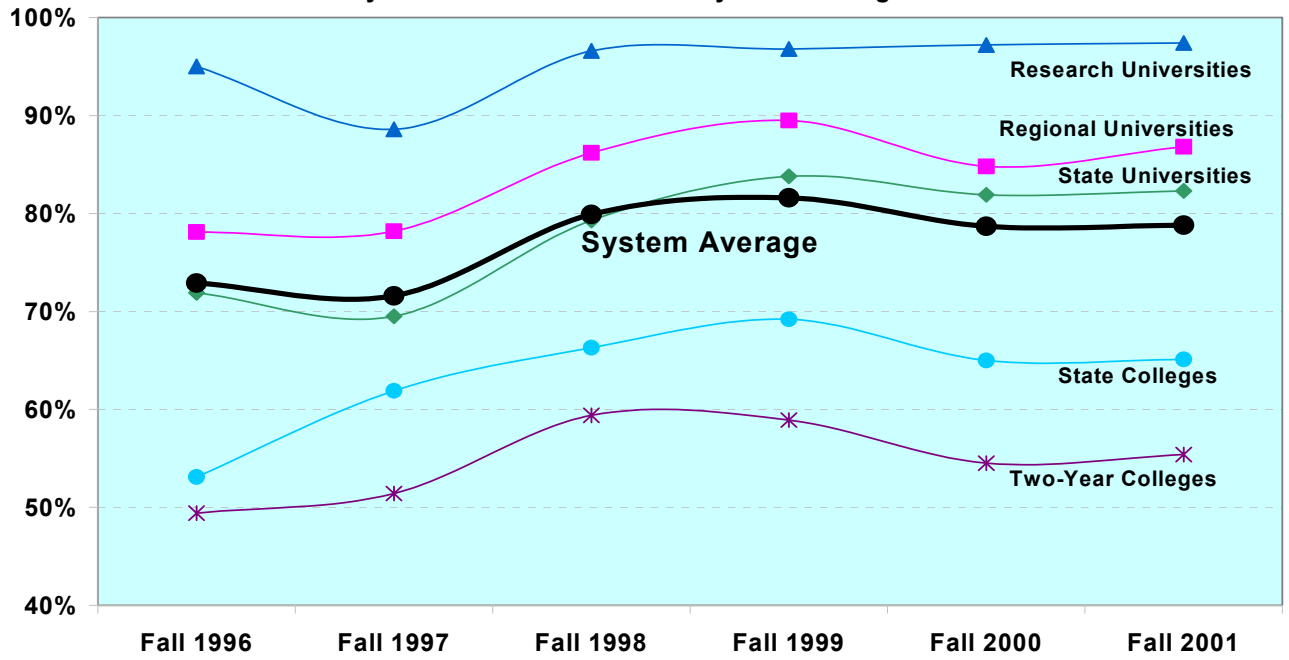
<sup>8</sup> The first two years of the HOPE Scholarship program contained income caps, limiting student participation. Consequently, we have chosen to cover Fall 1996 to Fall 2001 in this report, thus controlling the effects of the early broadening of the HOPE program.

<sup>9</sup> High school grade point average calculations to determine HOPE Scholarship eligibility are currently limited to the 16 core curriculum courses in the following subject areas: English, math, social studies, foreign language and science.

<sup>10</sup> There is a one-year time lag in officially identifying all HOPE Scholars due to retroactive award policies and year-end budget closures.

Figure 1

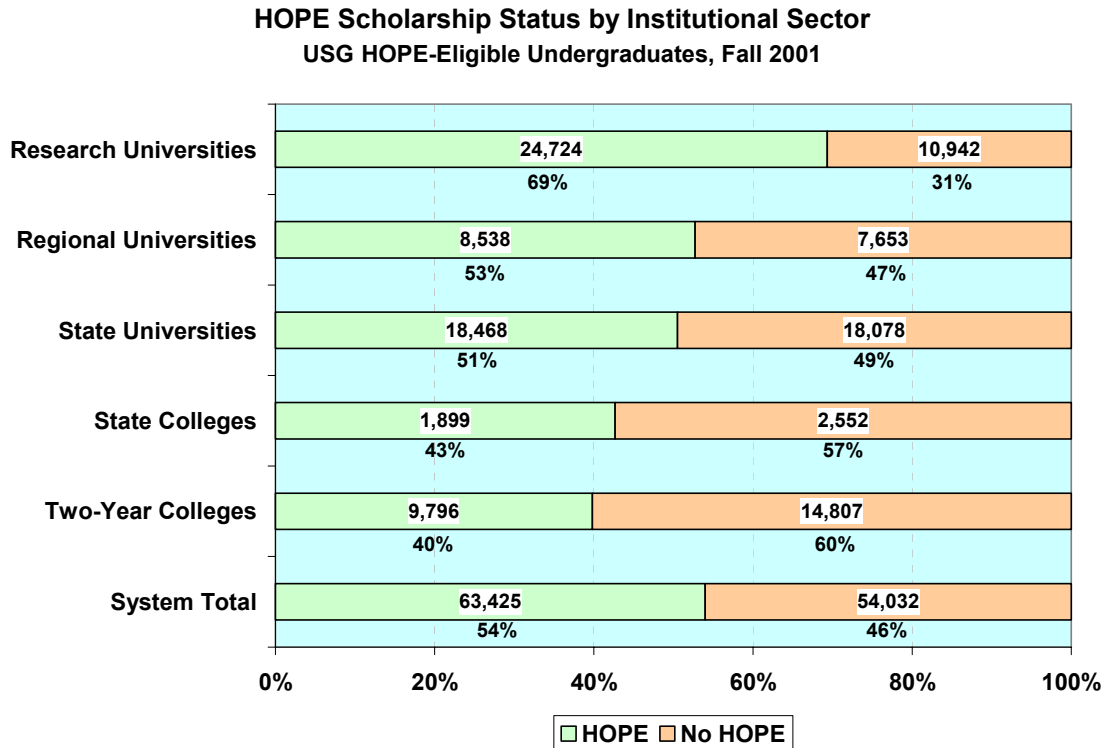
**HOPE Scholars  
USG First-Time Freshmen  
by Institutional Sector and System Average**



### HOPE Scholarship Status by Institutional Sector

In Fall 2001, 63,425 USG undergraduates had the HOPE Scholarship, representing 54 percent of the HOPE-eligible population (see Figure 2). Variation by institutional sector is observed in the proportion of HOPE scholars within the HOPE-eligible population. At research universities, approximately 70 percent of the HOPE-eligible population receives the scholarship, as compared to 40 percent at state and two-year colleges. HOPE scholars represent about one half of the HOPE-eligible population in both the regional and state university sectors.

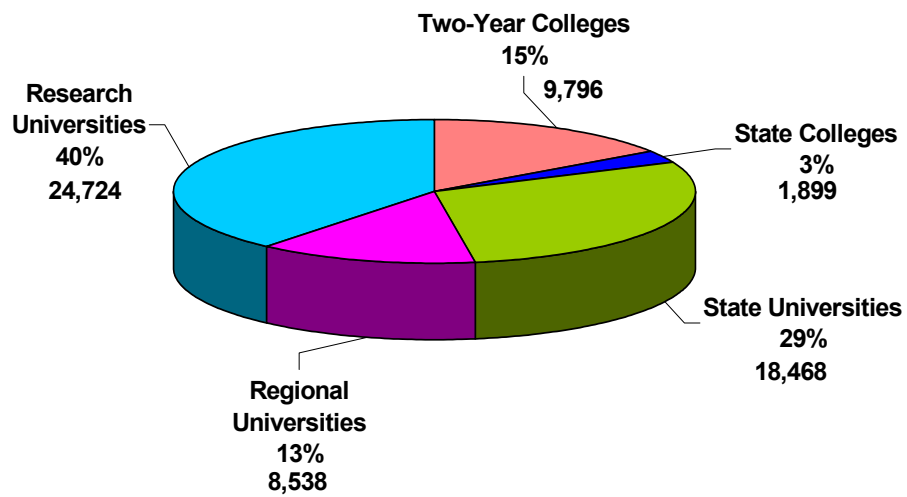
Figure 2



Over 24,000 of HOPE scholars attending USG institutions are enrolled at research universities, representing 40 percent of the population (see Figure 3). An additional 18,468 scholarship recipients attend state universities. Thus, approximately 70 percent of all HOPE scholars within the USG are enrolled in either research or state universities.

Figure 3

**HOPE Scholars by Institutional Sector  
USG Undergraduates, Fall 2001**

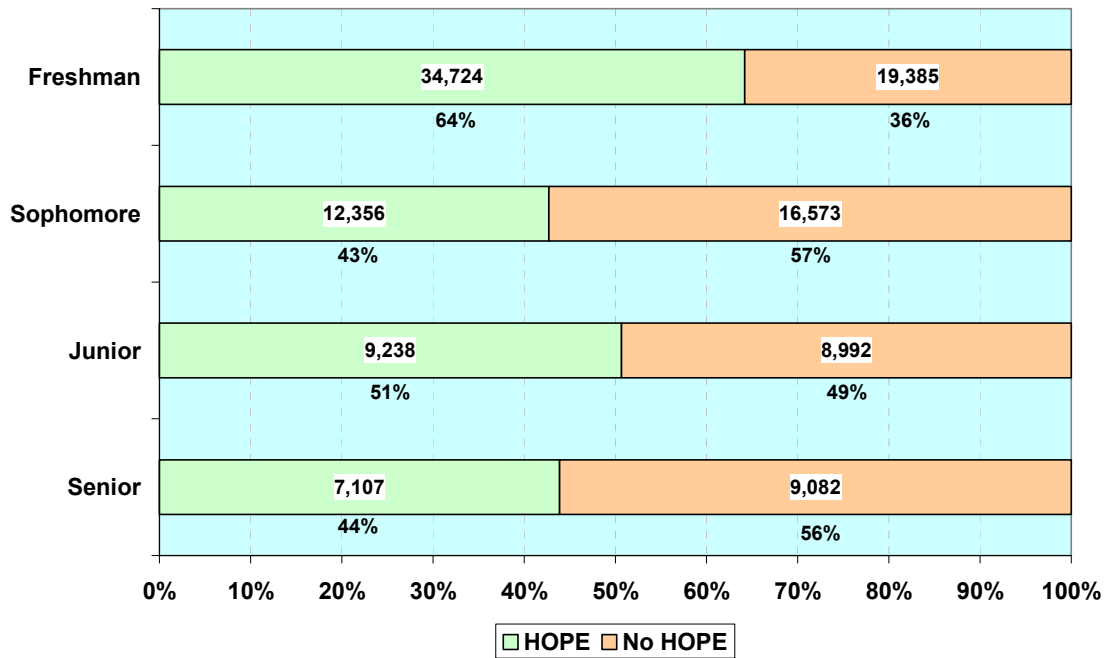


### HOPE Scholarship Status by Student Level

Figure 4 illustrates that the proportion of HOPE scholars within the HOPE-eligible population varies by student level. In Fall 2001, the majority (64 percent) of the HOPE-eligible freshman population held the scholarship. In contrast, the majority (56 percent) of the HOPE-eligible senior population did not have the scholarship.

Figure 4

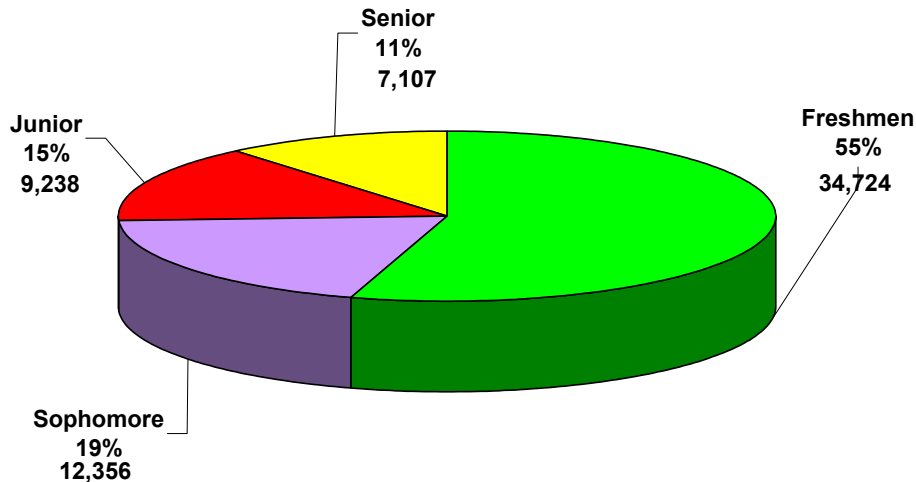
**HOPE Scholarship Status by Student Level**  
**USG HOPE-Eligible Undergraduates, Fall 2001**



Freshmen also account for the greatest proportion of all HOPE scholars by student level. In Fall 2001, 55 percent (34,724) of all HOPE scholars were freshmen, as compared to 11 percent (7,107) at the senior level (see Figure 5).

Figure 5

**HOPE Scholars by Student Level  
USG Undergraduates, Fall 2001**



**Conclusions**

Proposed changes to the HOPE Scholarship Program could be enacted by the next legislative session, impacting well over 60,000 USG students. The Office of Strategic Research and Analysis will continue to examine how these policy changes could affect the various sub-populations of HOPE Scholars through a series of reports.

For more information, write or email:

Dr. Anoush Pisani  
Senior Research Associate  
Board of Regents of the University System of Georgia  
270 Washington St., SW  
Atlanta, Georgia 30334

[Anoush.Pisani@usg.edu](mailto:Anoush.Pisani@usg.edu)

## Appendix Tables – Fall 1996 through Fall 2001

### University System of Georgia First-Time Freshmen with the HOPE Scholarship Fall 1996

<u>Institution Name</u>	<u>All First-Time Freshmen</u>	<u>First-Time Freshmen from Georgia High Schools**</u>		
		<u>Total Freshmen</u>	<u># with HOPE</u>	<u>% with HOPE</u>
Georgia Institute of Technology	1,943	1,224	1,189	97.1
Georgia State University	1,685	1,528	1,351	88.4
University of Georgia	3,587	3,186	3,103	97.4
<i>* Research Universities</i>	<i>7,215</i>	<i>5,938</i>	<i>5,643</i>	<i>95.0</i>
Georgia Southern University	3,055	2,754	2,204	80.0
Valdosta State University	1,797	1,576	1,178	74.7
<i>* Regional Universities</i>	<i>4,852</i>	<i>4,330</i>	<i>3,382</i>	<i>78.1</i>
Albany State University	489	397	182	45.8
Armstrong Atlantic State University	1,067	606	360	59.4
Augusta State University	817	643	436	67.8
Clayton College & State University	1,035	429	284	66.2
Columbus State University	700	509	390	76.6
Fort Valley State University	612	482	234	48.5
Georgia College & State University	700	660	558	84.5
Georgia Southwestern State University	319	267	177	66.3
Kennesaw State University	1,226	992	786	79.2
North Georgia College & State University	552	507	446	88.0
Savannah State University	466	312	121	38.8
Southern Polytechnic State University	375	332	289	87.0
State University of West Georgia	1,241	1,111	951	85.6
<i>* State Universities</i>	<i>9,599</i>	<i>7,247</i>	<i>5,214</i>	<i>71.9</i>
Dalton State College	630	486	313	64.4
Macon State College	919	490	205	41.8
<i>* State Colleges</i>	<i>1,549</i>	<i>976</i>	<i>518</i>	<i>53.1</i>
Abraham Baldwin Agricultural College	724	565	323	57.2
Atlanta Metropolitan College	307	163	32	19.6
Bainbridge College	214	145	80	55.2
Coastal Georgia Community College	386	229	104	45.4
Darton College	525	376	196	52.1
East Georgia College	215	151	84	55.6
Floyd College	866	553	229	41.4
Gainesville College	457	359	257	71.6
Georgia Perimeter College	2,605	1,366	507	37.1
Gordon College	655	558	302	54.1
Middle Georgia College	637	566	306	54.1
South Georgia College	271	228	156	68.4
Waycross College	238	158	102	64.6
<i>* Two-Year Colleges</i>	<i>8,100</i>	<i>5,417</i>	<i>2,678</i>	<i>49.4</i>
<b>** System Totals</b>	<b>31,315</b>	<b>23,908</b>	<b>17,435</b>	<b>72.9</b>

SRPT701  
1/24/2003

\*\* "First-time Freshmen from Georgia High Schools" are the subset of freshmen who have a graduation date from a Georgia high school of 1993 or later. These students are considered eligible for HOPE, but in order to receive HOPE, they must meet academic requirements (a 3.0 in core high school courses). This column also includes any additional first-time freshmen receiving HOPE according to GSFC records but who did not appear to SIRS as Georgia high school graduates. This report includes only those students who received the HOPE Scholarship; it does not count HOPE Grant recipients as scholarship recipients.



**University System of Georgia**  
**First-Time Freshmen with the HOPE Scholarship**  
**Fall 1997**

<u>Institution Name</u>	<u>All First-Time Freshmen</u>	<u>First-Time Freshmen from Georgia High Schools**</u>		
		<u>Total Freshmen</u>	<u># with HOPE</u>	<u>% with HOPE</u>
Georgia Institute of Technology	1,797	1,175	1,143	97.3
Georgia State University	2,023	1,872	1,515	80.9
University of Georgia	4,226	3,740	3,356	89.7
<i>* Research Universities</i>	<i>8,046</i>	<i>6,787</i>	<i>6,014</i>	<i>88.6</i>
Georgia Southern University	2,490	2,249	1,810	80.5
Valdosta State University	1,590	1,429	1,068	74.7
<i>* Regional Universities</i>	<i>4,080</i>	<i>3,678</i>	<i>2,878</i>	<i>78.2</i>
Albany State University	552	495	293	59.2
Armstrong Atlantic State University	876	582	387	66.5
Augusta State University	807	646	367	56.8
Clayton College & State University	528	391	242	61.9
Columbus State University	664	536	420	78.4
Fort Valley State University	487	420	221	52.6
Georgia College & State University	818	739	579	78.3
Georgia Southwestern State University	499	325	197	60.6
Kennesaw State University	1,236	965	741	76.8
North Georgia College & State University	565	506	416	82.2
Savannah State University	447	325	120	36.9
Southern Polytechnic State University	400	357	294	82.4
State University of West Georgia	1,221	1,098	858	78.1
<i>* State Universities</i>	<i>9,100</i>	<i>7,385</i>	<i>5,135</i>	<i>69.5</i>
Dalton State College	537	457	340	74.4
Macon State College	657	433	211	48.7
<i>* State Colleges</i>	<i>1,194</i>	<i>890</i>	<i>551</i>	<i>61.9</i>
Abraham Baldwin Agricultural College	844	657	345	52.5
Atlanta Metropolitan College	316	175	33	18.9
Bainbridge College	148	117	72	61.5
Coastal Georgia Community College	250	176	86	48.9
Darton College	543	385	226	58.7
East Georgia College	260	208	73	35.1
Floyd College	602	473	232	49.0
Gainesville College	714	612	434	70.9
Georgia Perimeter College	1,890	1,247	500	40.1
Gordon College	904	728	410	56.3
Middle Georgia College	688	572	307	53.7
South Georgia College	284	231	139	60.2
Waycross College	199	158	95	60.1
<i>* Two-Year Colleges</i>	<i>7,642</i>	<i>5,739</i>	<i>2,952</i>	<i>51.4</i>
<b>** System Totals</b>	<b>30,062</b>	<b>24,479</b>	<b>17,530</b>	<b>71.6</b>

SRPT701  
1/24/2003

\*\* "First-time Freshmen from Georgia High Schools" are the subset of freshmen who have a graduation date from a Georgia high school of 1993 or later. These students are considered eligible for HOPE, but in order to receive HOPE they must meet academic requirements (a 3.0 in core high school courses). This column also includes any additional first-time freshmen receiving HOPE according to GSFC records but who did not appear to SIRS as Georgia high school graduates. This report includes only those students who received the HOPE Scholarship; it does not count HOPE Grant recipients as scholarship recipients.

**University System of Georgia**  
**First-Time Freshmen with the HOPE Scholarship**  
**Fall 1998**

<u>Institution Name</u>	<u>All First-Time Freshmen</u>	<u>First-Time Freshmen from Georgia High Schools**</u>		
		<u>Total Freshmen</u>	<u># with HOPE</u>	<u>% with HOPE</u>
Georgia Institute of Technology	2,182	1,367	1,337	97.8
Georgia State University	1,592	1,494	1,365	91.4
University of Georgia	4,289	3,814	3,746	98.2
<i>* Research Universities</i>	<i>8,063</i>	<i>6,675</i>	<i>6,448</i>	<i>96.6</i>
Georgia Southern University	2,842	2,623	2,226	84.9
Valdosta State University	1,310	1,180	1,054	89.3
<i>* Regional Universities</i>	<i>4,152</i>	<i>3,803</i>	<i>3,280</i>	<i>86.2</i>
Albany State University	465	416	292	70.2
Armstrong Atlantic State University	652	487	365	74.9
Augusta State University	846	668	497	74.4
Clayton College & State University	580	442	341	77.1
Columbus State University	797	661	420	63.5
Fort Valley State University	444	380	206	54.2
Georgia College & State University	760	708	628	88.7
Georgia Southwestern State University	363	299	258	86.3
Kennesaw State University	1,182	1,017	849	83.5
North Georgia College & State University	600	563	521	92.5
Savannah State University	347	235	142	60.4
Southern Polytechnic State University	393	375	329	87.7
State University of West Georgia	1,693	1,591	1,367	85.9
<i>* State Universities</i>	<i>9,122</i>	<i>7,842</i>	<i>6,215</i>	<i>79.3</i>
Dalton State College	760	568	395	69.5
Macon State College	547	372	228	61.3
<i>* State Colleges</i>	<i>1,307</i>	<i>940</i>	<i>623</i>	<i>66.3</i>
Abraham Baldwin Agricultural College	781	624	402	64.4
Atlanta Metropolitan College	300	161	29	18.0
Bainbridge College	246	160	96	60.0
Coastal Georgia Community College	209	143	90	62.9
Darton College	591	436	257	58.9
East Georgia College	338	290	143	49.3
Floyd College	493	389	240	61.7
Gainesville College	702	621	427	68.8
Georgia Perimeter College	1,933	1,390	725	52.2
Gordon College	808	693	443	63.9
Middle Georgia College	590	475	324	68.2
South Georgia College	344	268	157	58.6
Waycross College	166	128	100	78.1
<i>* Two-Year Colleges</i>	<i>7,501</i>	<i>5,778</i>	<i>3,433</i>	<i>59.4</i>
<b>** System Totals</b>	<b>30,145</b>	<b>25,038</b>	<b>19,999</b>	<b>79.9</b>

SRPT701  
1/24/2003

\*\* "First-time Freshmen from Georgia High Schools" are the subset of freshmen who have a graduation date from a Georgia high school of 1993 or later. These students are considered eligible for HOPE, but in order to receive HOPE they must meet academic requirements (a 3.0 in core high school courses). This column also includes any additional first-time freshmen receiving HOPE according to GSFC records but who did not appear to SIRS as Georgia high school graduates. This report includes only those students who received the HOPE Scholarship; it does not count HOPE Grant recipients as scholarship recipients.

**University System of Georgia  
First-Time Freshmen with the HOPE Scholarship  
Fall 1999**

<u>Institution Name</u>	<u>All First-Time Freshmen</u>	<u>First-Time Freshmen from Georgia High Schools**</u>		
		<u>Total Freshmen</u>	<u># with HOPE</u>	<u>% with HOPE</u>
Georgia Institute of Technology	2,323	1,414	1,376	97.3
Georgia State University	1,848	1,715	1,588	92.6
University of Georgia	4,253	3,805	3,747	98.5
<i>* Research Universities</i>	<i>8,424</i>	<i>6,934</i>	<i>6,711</i>	<i>96.8</i>
Georgia Southern University	3,243	3,044	2,709	89.0
Valdosta State University	1,196	1,053	956	90.8
<i>* Regional Universities</i>	<i>4,439</i>	<i>4,097</i>	<i>3,665</i>	<i>89.5</i>
Albany State University	678	581	448	77.1
Armstrong Atlantic State University	688	514	413	80.4
Augusta State University	832	654	502	76.8
Clayton College & State University	612	457	355	77.7
Columbus State University	727	622	522	83.9
Fort Valley State University	401	339	196	57.8
Georgia College & State University	726	694	653	94.1
Georgia Southwestern State University	268	223	206	92.4
Kennesaw State University	1,345	1,138	982	86.3
North Georgia College & State University	655	609	571	93.8
Savannah State University	327	212	142	67.0
Southern Polytechnic State University	380	341	288	84.5
State University of West Georgia	1,636	1,560	1,381	88.5
<i>* State Universities</i>	<i>9,275</i>	<i>7,944</i>	<i>6,659</i>	<i>83.8</i>
Dalton State College	736	559	415	74.2
Macon State College	597	458	289	63.1
<i>* State Colleges</i>	<i>1,333</i>	<i>1,017</i>	<i>704</i>	<i>69.2</i>
Abraham Baldwin Agricultural College	821	664	441	66.4
Atlanta Metropolitan College	324	153	35	22.9
Bainbridge College	299	192	108	56.3
Coastal Georgia Community College	205	138	84	60.9
Darton College	585	443	266	60.0
East Georgia College	409	338	159	47.0
Floyd College	517	397	257	64.7
Gainesville College	736	652	475	72.9
Georgia Perimeter College	2,140	1,546	784	50.7
Gordon College	970	795	481	60.5
Middle Georgia College	698	542	332	61.3
South Georgia College	358	283	187	66.1
Waycross College	175	135	89	65.9
<i>* Two-Year Colleges</i>	<i>8,237</i>	<i>6,278</i>	<i>3,698</i>	<i>58.9</i>
<b>** System Totals</b>	<b>31,708</b>	<b>26,270</b>	<b>21,437</b>	<b>81.6</b>

SRPT701  
1/24/2003

\*\* "First-time Freshmen from Georgia High Schools" are the subset of freshmen who have a graduation date from a Georgia high school of 1993 or later. These students are considered eligible for HOPE, but in order to receive HOPE they must meet academic requirements (a 3.0 in core high school courses). This column also includes any additional first-time freshmen receiving HOPE according to GSFC records but who did not appear to SIRS as Georgia high school graduates. This report includes only those students who received the HOPE Scholarship; it does not count HOPE Grant recipients as scholarship recipients.

**University System of Georgia**  
**First-Time Freshmen with the HOPE Scholarship**  
**Fall 2000**

<u>Institution Name</u>	<u>All First-Time Freshmen</u>	<u>First-Time Freshmen from Georgia High Schools**</u>		
		<u>Total Freshmen</u>	<u># with HOPE</u>	<u>% with HOPE</u>
Georgia Institute of Technology	2,193	1,343	1,313	97.8
Georgia State University	2,146	1,981	1,868	94.3
University of Georgia	3,943	3,482	3,433	98.6
<i>* Research Universities</i>	8,282	6,806	6,614	97.2
Georgia Southern University	2,829	2,643	2,219	84.0
Valdosta State University	1,299	1,194	1,033	86.5
<i>* Regional Universities</i>	4,128	3,837	3,252	84.8
Albany State University	638	569	393	69.1
Armstrong Atlantic State University	606	465	375	80.6
Augusta State University	747	612	455	74.3
Clayton College & State University	641	475	350	73.7
Columbus State University	852	690	592	85.8
Fort Valley State University	382	301	190	63.1
Georgia College & State University	771	715	658	92.0
Georgia Southwestern State University	325	277	230	83.0
Kennesaw State University	1,335	1,122	934	83.2
North Georgia College & State University	628	566	525	92.8
Savannah State University	390	290	190	65.5
Southern Polytechnic State University	380	350	297	84.9
State University of West Georgia	1,671	1,597	1,377	86.8
<i>* State Universities</i>	9,366	8,019	6,566	81.9
Dalton State College	783	511	338	66.1
Macon State College	732	556	356	64.0
<i>* State Colleges</i>	1,515	1,067	694	65.0
Abraham Baldwin Agricultural College	902	721	404	56.0
Atlanta Metropolitan College	510	243	59	24.3
Bainbridge College	263	183	79	43.2
Coastal Georgia Community College	395	248	139	56.0
Darton College	637	480	274	57.1
East Georgia College	464	392	189	48.2
Floyd College	579	425	254	59.8
Gainesville College	743	650	438	67.4
Georgia Perimeter College	2,190	1,610	788	48.9
Gordon College	898	742	430	58.0
Middle Georgia College	588	515	294	57.1
South Georgia College	312	224	137	61.2
Waycross College	182	144	98	68.1
<i>* Two-Year Colleges</i>	8,663	6,577	3,583	54.5
<b>** System Totals</b>	<b>31,954</b>	<b>26,306</b>	<b>20,709</b>	<b>78.7</b>

SRPT701  
1/24/2003

\*\* "First-time Freshmen from Georgia High Schools" are the subset of freshmen who have a graduation date from a Georgia high school of 1993 or later. These students are considered eligible for HOPE, but in order to receive HOPE, they must meet academic requirements (a 3.0 in core high school courses). This column also includes any additional first-time freshmen receiving HOPE according to GSFC records but who did not appear to SIRS as Georgia high school graduates. This report includes only those students who received the HOPE Scholarship; it does not count HOPE Grant recipients as scholarship recipients.

**University System of Georgia**  
**First-Time Freshmen with the HOPE Scholarship**  
**Fall 2001**

<u>Institution Name</u>	<u>All First-Time Freshmen</u>	<u>First-Time Freshmen from Georgia High Schools**</u>		
		<u>Total Freshmen</u>	<u># with HOPE</u>	<u>% with HOPE</u>
Georgia Institute of Technology	2,205	1,316	1,280	97.3
Georgia State University	2,224	2,046	1,941	94.9
University of Georgia	4,071	3,474	3,434	98.9
<i>* Research Universities</i>	<i>8,500</i>	<i>6,836</i>	<i>6,655</i>	<i>97.4</i>
Georgia Southern University	2,612	2,448	2,121	86.6
Valdosta State University	1,572	1,432	1,245	86.9
<i>* Regional Universities</i>	<i>4,184</i>	<i>3,880</i>	<i>3,366</i>	<i>86.8</i>
Albany State University	417	363	274	75.5
Armstrong Atlantic State University	627	478	409	85.6
Augusta State University	832	646	471	72.9
Clayton College & State University	568	442	339	76.7
Columbus State University	875	708	588	83.1
Fort Valley State University	417	343	208	60.6
Georgia College & State University	858	816	737	90.3
Georgia Southwestern State University	276	235	208	88.5
Kennesaw State University	1,444	1,233	1,024	83.1
North Georgia College & State University	665	597	528	88.4
Savannah State University	487	352	227	64.5
Southern Polytechnic State University	393	364	308	84.6
State University of West Georgia	1,568	1,490	1,317	88.4
<i>* State Universities</i>	<i>9,427</i>	<i>8,067</i>	<i>6,638</i>	<i>82.3</i>
Dalton State College	858	512	345	67.4
Macon State College	733	557	351	63.
<i>* State Colleges</i>	<i>1,591</i>	<i>1,069</i>	<i>696</i>	<i>65.1</i>
Abraham Baldwin Agricultural College	988	772	424	54.9
Atlanta Metropolitan College	370	170	54	31.8
Bainbridge College	312	209	88	42.1
Coastal Georgia Community College	472	267	137	51.3
Darton College	684	536	300	56.0
East Georgia College	478	414	225	54.4
Floyd College	715	549	309	56.3
Gainesville College	910	792	521	65.8
Georgia Perimeter College	2,563	1,842	948	51.5
Gordon College	1,021	809	488	60.3
Middle Georgia College	726	591	314	53.1
South Georgia College	331	276	171	62.0
Waycross College	174	131	100	76.3
<i>* Two-Year Colleges</i>	<i>9,744</i>	<i>7,358</i>	<i>4,079</i>	<i>55.44</i>
<b>** System Totals</b>	<b>33,446</b>	<b>27,210</b>	<b>21,434</b>	<b>78.8</b>

SRPT701  
1/24/2003

\*\* "First-time Freshmen from Georgia High Schools" are the subset of freshmen who have a graduation date from a Georgia high school of 1993 or later. These students are considered eligible for HOPE, but in order to receive HOPE, they must meet academic requirements (a 3.0 in core high school courses). This column also includes any additional first-time freshmen receiving HOPE according to GSFC records but who did not appear to SIRS as Georgia high school graduates. This report includes only those students who received the HOPE Scholarship; it does not count HOPE Grant recipients as scholarship recipients.