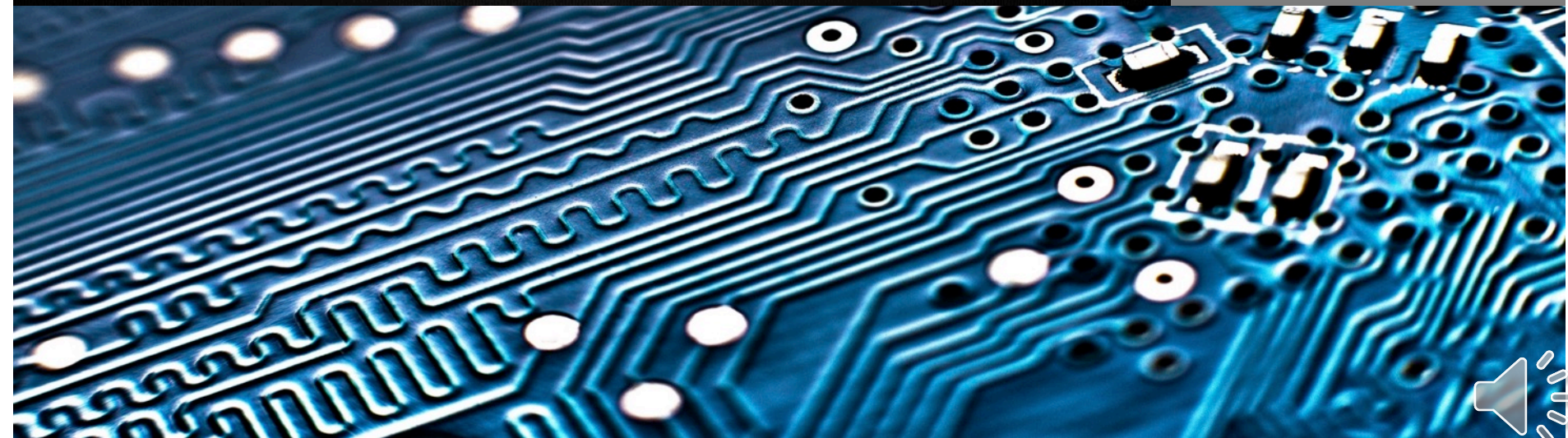


Academic Release Review for Fall EOT 20202

November 27, 2019



Academic Release – Fall EOT 2020 Timeframe

Academic Data Collection

Collection Open

- November 27, 2019

Census II Date

- December 20, 2019

Certification and Due Date

- January 7, 2020

Items Included in Release

- Academic Release 1.5
 - Campus ETL
- Data Collections ETL 1.3
 - Data Collection Extraction process (ZADMETL)

Items Included in Release

- New Data Elements
- New Validation Rules
- Updated Data Elements
- Updated Validation Rules
- New Reports
- Miscellaneous Updates

New Data Elements

- New Data Elements
 - International Baccalaureate Higher-Level English Examination (IB1) (STR183)
 - Min Score 1 – Max Score 7

New Validation Rules

- New Validation Rules
 - VSTE248 – International Baccalaureate Higher-Level English Examination (IB1) Score Range must be between 1 and 7.

Updated Data Elements

- Updated Data Elements
 - Undergraduate Admit Type - STE009
 - JE – Joint Enrollment/Early Admission (not eligible for **Dual Enrollment**)
 - RA – Residential Academy Students who are **Dual Enrollment** eligible
 - RN – Residential Academy Students who are not **Dual Enrollment** eligible

Updated Validation Rules

- Updated Validation Rules
 - VSTE156 - For students matriculating prior to Fall 2019, if the Learning Support Requirement Indicator - Math is S or I and the Learning Support Program Current Enrollment Indicator - Math cannot be null.
 - VSTE303 - For students matriculating Fall 2019 and forward, if student level is 10, 20, 30, 40, then Learning Support Requirement Indicator – Math 2 must not be null.
 - VSTE314 - For students matriculating Fall 2019 and forward, if student level is 10, 20, 30, 40, then Learning Support Program Current Enrollment Indicator – Math 2 must not be null.

Updated Validation Rules

- Updated Validation Rules
 - VSTE014 - If matriculation date is on or after Summer 2002 (20031), student level = US and Institution is NOT Georgia Southern University, Georgia Southwestern State University, University of West Georgia (FOR OTHER INSTITUTIONS), Admit Type valid values: CA, CN, CC, FR, FL, FP, FI, FO, NF, TR, TL, TP, NT, AU, TN, ND, PB, JE, RE, FD, TD, EC, DN, RA, RN.
 - VSTE254 - If matriculation date is equal to or greater than 20031, then If Student Type is D then Admit Type must be JE, EC, RA, DN, or RN.

Updated Validation Rules

- Updated Validation Rules
 - VCRS010 - For Abraham Baldwin Agricultural College, Atlanta Metropolitan State College, College of Coastal Georgia, Dalton State College, East Georgia State College, Georgia Gwinnett College, Georgia Highlands College, Gordon State College, and South Georgia State College, instruction level code must be 10, 20, 21, 22, 30, 31, 32, or NR.
 - VCRS011 - For Albany State University, Clayton State University, Fort Valley State University, Georgia Southwestern State University, and Savannah State University, instruction level code must be 10, 20, 21, 22, 30, 31, 32, 55, or NR.

Updated Validation Rules

- Updated Validation Rules
 - VCRS012 - For Columbus State University, Georgia College & State University, Georgia Institute of Technology, Georgia Southern University, Kennesaw State University, Middle Georgia State University, University of North Georgia, University Of West Georgia, and Valdosta State University, instruction level code must be 10, 20, 21, 22, 30, 31, 32, 55, 65, 70, or NR.
 - VCRS013 - For Augusta University, Georgia State University, and University Of Georgia, instruction level code must be 10, 20, 21, 22, 30, 31, 32, 55, 65, 70, 80, or NR.

- Campus ETL Updates
 - Include NR valid values
 - Populate the ODS_ADMSTU_ENR_REQ_MIMIC table with data for the Learning Support Requirement Indicator – Math 2 and Learning Support Program Current Enrollment Indicator – Math 2
 - Populate Learning Support Current Enrollment Indicator with:
 - X (Exempt)
 - C (Satisfied)
 - Y (Currently Enrolled) or N (Not Currently Enrolled)

New Reports

Learning Support Turnaround Report

English

Math 1

Math 2

University System of Georgia

Learning Support - Students with Learning Support Requirements After 30 Hours

Institution	Student ID	Learning Support Requirement	Current Enrollment	Learning Support Completion Date	Credit Hours
ITS University	900001234	System	N		31
	900004567	Institutional	Y		36

Miscellaneous Updates

Data Element Dictionary Updates

- Instruction Level Code (CRS005) – Business Practice: The code NR should be used to identify courses that the institution has designated as placeholders (i.e. placeholder course for study abroad). Use of this code will allow the course to be collected but not included in the credit hour or course enrollment reports. This code will also exclude the placeholder course from being counted in the student's credit hours attempted. When NR is used on a course, all course sections will be impacted.
- Undergraduate Admit Type (STE009) – Business Practice URL
- Student Type (STE080) – Business Practice URL

Academic Data Collection

Collection Open

- November 27, 2019

Census II Date

- December 20, 2019

Certification and Due Date

- January 7, 2020

Data Collections Site

https://www.usg.edu/georgia_best/application_development_and_support/data_collections

During Beta Testing

- DW_TEST@usg.edu

During the Collection

- Helpdesk@usg.edu



UNIVERSITY SYSTEM OF GEORGIA

Information Technology Services

