

COLLEGE OF COASTAL GEORGIA

The following table shows fall 2013 housing demand from off-campus and Coastal Place students, distributed by unit preference from the survey.¹ Demand from on-campus residents of Lakeside Village is excluded since we would not want new housing to count on cannibalizing these residents.

Unit Type	Full-Time Interested Student Preference	Potential Incremental Demand	Coastal Place Student Preference	Potential Demand	Total Potential Demand
2-Sgl-BR Semi-Suite (Lakeside Village)	4%	7	8%	3	10
4-Sgl-BR Suite (Lakeside Village)	9%	14	15%	7	21
2-Sgl-BR Semi-Suite (Proposed)	9%	14	0%	0	14
2-Sgl-BR Suite (Lakeside Village)	22%	35	15%	7	42
2-Sgl-BR Suite w/ Kitchenette (Proposed)	55%	86	62%	28	114
Total	100%	156	100%	45	201

Despite the cost, the preference strongly favors the most expensive unit—with a kitchenette.

The semester rents that the survey showed—given in the first data column in the table below—were for the current (2013–14) academic year, but ASL assumes that rents can increase by inflation at a rate of 3% annually, to the rates shown through 2016–17, without affecting demand.

Unit Type	2013–14	2014–15	2015–16	2016–17
2-Sgl-BR Semi-Suite (Lakeside Village)	\$2,478	\$2,552	\$2,629	\$2,708
4-Sgl-BR Suite (Lakeside Village)	\$2,361	\$2,432	\$2,505	\$2,580
2-Sgl-BR Semi-Suite (Proposed)	\$2,545	\$2,621	\$2,700	\$2,781
2-Sgl-BR Suite (Lakeside Village)	\$2,691	\$2,772	\$2,855	\$2,941
2-Sgl-BR Suite w/ Kitchenette (Proposed)	\$2,733	\$2,815	\$2,899	\$2,986

The units were tested in the survey with the floor plan drawings and descriptions shown on the following page.

¹ Demand from Coastal Place respondents is not reduced with a closure rate factor, reflecting that current residents have demonstrated their willingness to live in college housing. Demand is at the midpoint of the range of the 95% confidence interval.

**Two-Single-Bedroom Semi-Suite
(Lakeside Village)**



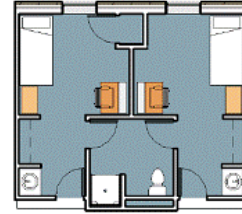
Designed for two students, with two bedrooms and one bathroom.

**Four-Single-Bedroom Suite
(Lakeside Village)**



Designed for four students, one in each bedroom, with two shared bathrooms and a living room.

**Two-Single-Bedroom Semi-Suite
(Proposed)**



Designed for two students, with two private bedrooms sharing one bathroom between them.

Two-Single-Bedroom Suite (Lakeside Village)



Designed for two students, with two private bedrooms, one bathroom, and a living room.

**Two-Single-Bedroom Suite with Kitchenette
(Proposed)**



Designed for two students, with two private bedrooms, one bathroom, and a kitchenette.

