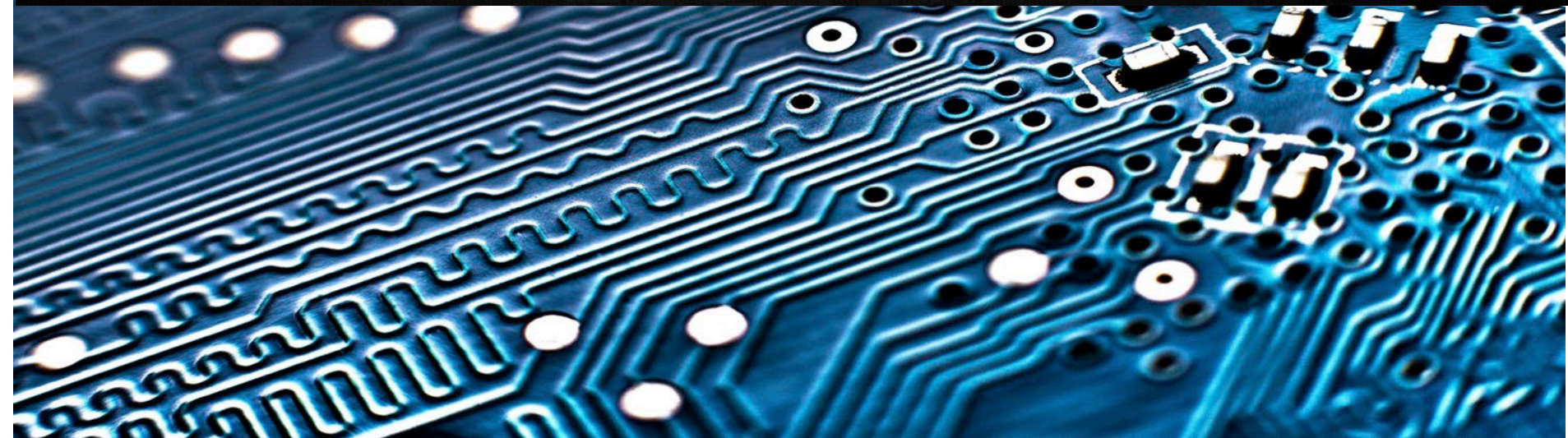


University System of Georgia Information Technology Services  
**Data & Reporting Services**

The top right section features a light gray background with a pattern of white, stylized clouds. Below the clouds, the text "University System of Georgia Information Technology Services" is written in a small, dark blue font. Underneath that, the words "Data & Reporting Services" are displayed in a large, bold, blue font. A faint outline of the state of Georgia is visible in the background behind the text.

# Academic Release Review for Summer MT 20241



## Summer Mid-Term Collection (20241)

### ○ Key Dates

- June 13, 2023 – Collection Opens
- June 20, 2023 – Successful extraction required
- July 7, 2023 – Census Date
- July 14, 2023 – Certification and Due Date

# Items Included in Release

- Academic Release 1.15 (**Updated**)
  - Campus ETL
- Data Collections ETL 1.3
  - Data Collection Extraction process (ZADMETL)

# Items Included in Release

- FAILURE status for empty mimic tables
  - Campus ETL modification
  - Data Collection Extraction (ZADMETL) .lis file
- County of Origin at Matriculation
  - Campus ETL modification
  - DED Updates

# Items Included in Release

- Collection of College and Department Codes and Descriptions
  - Campus ETL modification
  - New data elements
  - Mimic Table modifications
  - Table dump report modifications
- Duplicate program records
  - DED Updates
  - New validations to identify duplicate records

# FAILURE Status - Empty Mimic Tables

- Data Collection Extraction (ZADMETL).lis file
  - FAILURE Status
    - Process Status
    - Overall Status
    - Step Name Status
  - Error Message
    - “NO ROWS HAVE BEEN INSERTED INTO MIMIC TABLE”

# FAILURE Status - Empty Mimic Tables

- Excluded Mimic Tables
  - ODS\_ADMSTU\_ADMISSIONS\_MIMIC
  - ODS\_ADMSTU\_MILITARY\_MIMIC
  - ODS\_ADMSTU\_SAP\_MIMIC
  - ODS\_ADMGRAD\_ADDRESS\_MIMIC



# FAILURE Status - Empty Mimic Tables

** Return Status **					
Data Mart	Process Status				
ADC	<b>FAILURE</b>				← Process Status
** Log Information **					
Data Mart	Step Name	Status	Start Time	End Time	Error
ADC	OVERALL	<b>Overall Status →</b>			
ADC	DELETE MIMICS	SUCCESS	4/13/2023 14:49	4/13/2023 14:49	
ADC	SORXREF CHECK	SUCCESS	4/13/2023 14:49	4/13/2023 14:49	
ADC	UPDATE POPULATION TABLES	<b>FAILURE</b>	4/13/2023 14:49	4/13/2023 14:49	ORA-01652: unable to extend TEMP tablespace
ADC	UPDATE POPULATION TABLES - DELETE	SUCCESS	4/13/2023 14:49	4/13/2023 14:49	
ADC	UPDATE POPULATION TABLES - CURRENT	SUCCESS	4/13/2023 14:49	4/13/2023 14:49	<b>POPULATION TABLE STEPS</b>
ADC	UPDATE POPULATION TABLES - PREVIOUS	SUCCESS	4/13/2023 14:49	4/13/2023 14:49	
ADC	UPDATE POPULATION TABLES - AWARDED	<b>FAILURE</b>	4/13/2023 14:49	4/13/2023 14:49	ORA-01652: unable to extend TEMP tablespace
ADC	ODS_ADMCRS_CATALOG_MIMIC	SUCCESS	4/13/2023 14:49	4/13/2023 14:49	
ADC	ODS_ADMCRS_CLS_SESSION_MIMIC	SUCCESS	4/13/2023 14:49	4/13/2023 14:49	
ADC	ODS_ADMCRS_ENROLL_MIMIC	SUCCESS	4/13/2023 14:49	4/13/2023 14:49	
ADC	ODS_ADMCRS_FACULTY_MIMIC	SUCCESS	4/13/2023 14:49	4/13/2023 14:49	<b>ADMCRS MIMIC TABLE STEPS</b>
ADC	ODS_ADMCRS_GRADE_MIMIC-CURRTERM	SUCCESS	4/13/2023 14:49	4/13/2023 14:49	
ADC	ODS_ADMCRS_GRADE_MIMIC-PREVTERM	SUCCESS	4/13/2023 14:49	4/13/2023 14:49	
ADC	ODS_ADMCRS_SECTION_MIMIC	SUCCESS	4/13/2023 14:49	4/13/2023 14:49	
ADC	ODS_ADMCRS_SECTION_ATTR_MIMIC	SUCCESS	4/13/2023 14:49	4/13/2023 14:49	
ADC	ODS_ADMSTU_ADMISSIONS_MIMIC	SUCCESS	4/13/2023 14:49	4/13/2023 14:49	
ADC	ODS_ADMSTU_ADV_STANDING_MIMIC	SUCCESS	4/13/2023 14:49	4/13/2023 14:49	
ADC	ODS_ADMSTU_ATTRIBUTES_MIMIC	SUCCESS	4/13/2023 14:49	4/13/2023 14:49	
ADC	ODS_ADMSTU_CONFIDENTIAL_MIMIC	SUCCESS	4/13/2023 14:49	4/13/2023 14:49	
ADC	ODS_ADMSTU_ENR_ADDRESS_MIMIC	SUCCESS	4/13/2023 14:49	4/13/2023 14:49	
ADC	ODS_ADMSTU_ENR_CUM_MIMIC	SUCCESS	4/13/2023 14:49	4/13/2023 14:49	<b>ADMSTU MIMIC TABLE STEPS</b>
ADC	ODS_ADMSTU_ENR_MATRIC_MIMIC	SUCCESS	4/13/2023 14:49	4/13/2023 14:49	
ADC	ODS_ADMSTU_ENR_REQ_MIMIC	SUCCESS	4/13/2023 14:49	4/13/2023 14:49	
ADC	ODS_ADMSTU_FEE_CLASS_MIMIC	SUCCESS	4/13/2023 14:49	4/13/2023 14:49	
ADC	ODS_ADMSTU_PROG_ENROLL_MIMIC	SUCCESS	4/13/2023 14:49	4/13/2023 14:49	
ADC	ODS_ADMSTU_REG_CPC_MIMIC	SUCCESS	4/13/2023 14:49	4/13/2023 14:49	
ADC	ODS_ADMSTU_SAP_MIMIC	SUCCESS	4/13/2023 14:49	4/13/2023 14:49	
ADC	ODS_ADMSTU_STE_ATTR_MIMIC	SUCCESS	4/13/2023 14:49	4/13/2023 14:49	
ADC	ODS_ADMSTU_TEST_RESULTS_MIMIC	SUCCESS	4/13/2023 14:49	4/13/2023 14:49	
ADC	ODS_ADMSTU_TRANSFER_MIMIC	SUCCESS	4/13/2023 14:49	4/13/2023 14:49	
ADC	ODS_ADM_FOCUS_AREA_MIMIC	SUCCESS	4/13/2023 14:49	4/13/2023 14:49	
ADC	ODS_COMMON_SORXREF_MIMIC	SUCCESS	4/13/2023 14:49	4/13/2023 14:49	<b>SOAXREF MIMIC TABLE STEP</b>
ADC	ODS_ADMGRAD_ADDRESS_MIMIC	SUCCESS	4/13/2023 14:49	4/13/2023 14:49	<b>ADMGRAD MIMIC TABLE STEPS</b>
ADC	ODS_ADMGRAD_CONFIDENTIAL_MIMIC	<b>FAILURE</b>	4/13/2023 14:49	4/13/2023 14:49	NO ROWS HAVE BEEN INSERTED INTO MIMIC TABLE
ADC	ODS_ADMGRAD_PROGRAM_MIMIC	<b>FAILURE</b>	4/13/2023 14:49	4/13/2023 14:49	NO ROWS HAVE BEEN INSERTED INTO MIMIC TABLE
ADC	ODS_ADMGRAD_STUDENT_MIMIC	<b>FAILURE</b>	4/13/2023 14:49	4/13/2023 14:49	NO ROWS HAVE BEEN INSERTED INTO MIMIC TABLE

^ Mimic Table Step Status





# County of Origin at Matriculation

- Campus ETL Updates
  - 888: Out of country
  - 999: Out of state
- DED Updates (SGR010 & STE020)
  - Updated Business Practice:

If the State of Origin is Georgia, the County of Origin at Matriculation must be a valid Georgia county code (001 – 159). If the State of Origin is not Georgia, then the County of Origin at Matriculation must be 999 for Out-of-State or 888 for Out-of-Country.

# College and Department Codes

- New Data Elements
  - Awarded Student Program:
    - SPA012: College Code
      - SHVCCUR\_COLL\_CODE
    - SPA013: College Description
      - STV\_COLL\_DESC
    - SPA014: Department Code
      - SOVCFOS\_DEPT\_CODE
    - SPA015: Department Description
      - STVDEPT\_DESC

# College and Department Codes

- New Data Elements (Cont.)
  - Enrolled Student Program:
    - SPE011: College Code – Enrolled
      - SGVCCUR\_COLL\_CODE
    - SPE012: College Description – Enrolled
      - STV\_COLL\_DESC
    - SPE013: Department Code – Enrolled
      - SOVCFOS\_DEPT\_CODE
    - SPE014: Department Description – Enrolled
      - STVDEPT\_DESC

# College and Department Codes

- Campus ETL / Mimic Table / Report Updates
  - ADMGRAD\_PROGRAM\_MIMIC
    - COLLEGE\_CODE
    - COLLEGE\_DESCR
    - DEPARTMENT\_CODE
    - DEPARTMENT\_DESCR
  - ADMSTU\_PROG\_ENROLL\_MIMIC
    - COLLEGE\_CODE
    - COLLEGE\_DESCR
    - DEPARTMENT\_CODE
    - DEPARTMENT\_DESCR

# Duplicate Program Records

- New Validation Rules
  - Institutional Major Code (SPA004)
    - VSPA011: Duplicate graduation program records (Degree Acronym + Institutional Major Code + Field of Study Category + Institution Program Code + Student Level Code ) should not exist for a student in the graduation term.

## Graduation Program Awarded (ODS\_ADMGRAD\_PROGRAM\_MIMIC)

20241 - MT

VSPA011 - Duplicate graduation program records (Degree Acronym + Institutional Major Code + Field of Study Category + Institution Program Code + Student Level Code) should not exist for a student in the graduation term.

ERROR_TRACKING_ID	Attribute List	Attribute Content	STU_INST_UID	STUDENT_INST_ID	CIP_CODE	DEGREE_LEVEL_CODE	DEGREE_ACRONYM
34296749	student_inst_id, degree_acronym, inst_major_code, fos_category, program_code, inst_student_academic_level, unique_seqno, cur_priority_no, fos_priority_no	913241024, BS, SOCI, MAJOR, BS-SOCI, US, 2, 2, 1	90292427	913241024	45110100	B	BS
34296748	student_inst_id, degree_acronym, inst_major_code, fos_category, program_code, inst_student_academic_level, unique_seqno, cur_priority_no, fos_priority_no	913241024, BS, SOCI, MAJOR, BS-SOCI, US, 3, 1, 1	90292427	913241024	45110100	B	BS

# Duplicate Program Records

- New Validation Rules
  - Institutional Major Code - Enrolled (SPE004)
    - VSPE022: Duplicate enrolled program records (Degree Acronym + Institutional Major Code + Field of Study Category + Institution Program Code + Student Level Indicator ) should not exist for a student in the current term.

Student Program Enrolled (ODS_ADMSTU_PROG_ENROLL_MIMIC)											
20241 - MT											
VSPE022 - Duplicate enrolled program records (Degree Acronym + Institutional Major Code + Field of Study Category + Institution Program Code + Student Level Indicator) should not exist for a student in the current term.											
ERROR_TRACKING_ID	Attribute List	Attribute Content	STU_INST_UID	STUDENT_INST_ID	CIP_CODE	DEGREE_LEVEL_CODE	DEGREE_ACRONYM	UNIQUE_SEQ_NO	INST_MAJOR_CODE	FOS_CATEGORY	FOS_PRIORITY_NO
34298741	student_inst_id, degree_acronym, inst_major_code, fos_category_program_code, inst_student_academic_level, unique_seq_no, cur_priority_no, fos_priority_no	913253592, MBA, MBAG, MAJOR, MBA- MBAG, GS, 99, 1, 1	90305008	913253592	52020101	M	MBA	99	MBAG	MAJOR	1
34298740	student_inst_id, degree_acronym, inst_major_code, fos_category_program_code, inst_student_academic_level, unique_seq_no, cur_priority_no, fos_priority_no	913253592, MBA, MBAG, MAJOR, MBA- MBAG, GS, 99, 21, 1	90305008	913253592	52020101	M	MBA	99	MBAG	MAJOR	1



# Duplicate Program Records

- DED Business Practice Updates
  - Institutional Major Code (SPA004)

A student's active and current graduation program record should not include duplicate combinations of Degree Acronym + Institutional Major Code + Field of Study Category + Institution Program Code + Student Level Code. (Duplicate awarded records differ by only the Unique Sequence Number, Field of Study Priority Number and/or Curriculum Priority Number.)

- Institutional Major Code - Enrolled (SPE004)

A student's active and current enrollment program record should not include duplicate combinations of Degree Acronym + Institutional Major Code + Field of Study Category + Institution Program Code + Student Level Code. (Duplicate records differ by only the Field of Study Priority Number and/or Curriculum Priority Number.)



## Data Collections Site (NEW)

[https://www.usg.edu/data\\_services](https://www.usg.edu/data_services)

## During Beta Testing

- DW\_TEST@usg.edu

## During the Collection

- Helpdesk@usg.edu



# UNIVERSITY SYSTEM OF GEORGIA

---

## Information Technology Services

