



## Overview of HOPE Scholarship Recipients in the University System of Georgia

### Introduction

For twelve years, the state of Georgia has been recognized as having the most generous merit-based student aid program in the nation, the HOPE (Helping Outstanding Pupils Educationally) Scholarship Program.<sup>1</sup> Having attended college on the G.I. Bill, then Governor Zell Miller wanted to institute an incentive program within the state of Georgia that would expand access to postsecondary education and encourage students to attend in-state institutions. Clearly, the number of Georgia residents benefiting from the HOPE Scholarship speaks to the success of the program. From September 1993 through July 2005, \$1,720,808,041 in merit-based aid was awarded to 413,476 USG students, with funding exclusively from the Georgia Lottery.<sup>2</sup>

For the eighth consecutive year, Georgia leads the nation in providing merit-based scholarships and grants to college students. The Annual Survey Report of the National Association of State Student Grant and Aid Programs (NASSGAP) states that in the 2003-2004 academic year, Georgia provided an average of \$1,506 per student, as compared to the nationwide average of \$500 (see Appendix A).<sup>3</sup> Georgia was second in "Total Aid Awards" given with 300,111 (New York had 370,657). However, when comparing the ratio of total awards given to the number of students enrolled, Georgia had a nation-leading ratio of 91.6 percent (see Appendix B).<sup>4</sup>

The HOPE Scholarship is funded entirely by proceeds from the Georgia Lottery Corporation.<sup>5</sup> In FY2005, the Georgia Lottery posted the highest sales in the 12-year history at \$2,922,332,167. This amount is \$211 million ahead of the previous sales record of \$2.71 billion in FY2004. The Georgia Lottery's FY2005 profits transferred over \$802,083,000 to the State Treasury's Lottery for Education Account.<sup>6</sup> This surpasses FY2004's record transfer by more than \$19 million and

---

<sup>1</sup> The HOPE Program includes: the HOPE Scholarship, which covers tuition, mandatory fees and a book allowance for all Georgia resident students graduating high school with a 3.0 GPA. Students must maintain a 3.0 GPA at various checkpoints in order to remain eligible for the scholarship. The HOPE Grant program provides tuition, fees and a book allowance for students pursuing non-degree programs at institutions of the Department of Technical and Adult Education. The HOPE GED program provides a one-time \$500 grant to recent GED recipients toward their first year of post-secondary study. The PROMISE Teacher Scholarship and Georgia HOPE Teacher Scholarship provide service-cancelable loans to undergraduate and graduate students pursuing teacher education degrees. The PROMISE II Teacher Scholarship is a service-cancelable loan designed to assist teacher aids and paraprofessionals in pursuing the baccalaureate degree in education. In 1993, the HOPE Scholarship Program had a family income cap of \$66,000. The cap was raised to \$100,000 in 1994. By 1995, all income caps were removed.

<sup>2</sup> Source: <http://www.gsfc.org/main/publishing/pdf/2004/annualrpt04.pdf> retrieved 8/15/05.

<sup>3</sup> Source: 35<sup>th</sup> Annual Survey Report on State-Sponsored Student Financial Aid 2003-2004 Academic Year, National Association of State Student Grant and Aid Programs. <http://www.nassgap.org/viewrepository.aspx?categoryID=3#>

<sup>4</sup> Ibid.

<sup>5</sup> The Georgia Lottery Corporation is legally required to allocate 35 percent of its lottery revenues to education, 51 percent of its revenues to players in winnings, and the remaining 14 percent is split between retailers and operating expenses.

<sup>6</sup> Georgia Code (O.C.G.A. 50-27) specifies that lottery receipts be used for "educational purposes and programs" only defined as: postsecondary tuition scholarships and grants; construction of educational facilities; technology of educational facilities; and pre-kindergarten for four-year-olds.

brings the total amount raised for educational programs in Georgia since inception to more than \$7.6 billion.<sup>7</sup>

The HOPE Scholarship Program has improved accessibility to higher education for Georgia residents<sup>8</sup>. As such, it is important to monitor trends of HOPE scholars attending our institutions, as the USG strives to create a more educated Georgia.

### **System-Wide Trends of First-Time Freshmen**

Since the inception of HOPE, both the number and proportion of first-time freshmen receiving HOPE has increased. The proportion of USG freshmen receiving the HOPE Scholarship has varied to some extent since 1996.<sup>9</sup> However, the longitudinal trend has been similar across institutional sectors (see Figure 1). With the exception of research universities, all institutional sectors experienced a slight decline in the number of HOPE Scholars for the Class of 2000. This decline is attributable to Georgia Student Finance Commission's adoption of a standard core of courses included in grade point average calculations.<sup>10</sup> In Fall 2004, 76.2 percent of first-time freshmen received HOPE in their first term. System-wide, there were approximately 7,000 more first-time freshmen HOPE scholars in Fall 2004 than in Fall 1996, reflecting a 40.2 percent increase<sup>11</sup> (see Appendix C). See Appendix D to compare the numbers of HOPE scholars between 1996 and 2004 across all student levels.

---

<sup>7</sup> Source: <http://galottery.com/gen/aboutUs/messageFromPresident.jsp?focus=aboutus> retrieved 8/15/05.

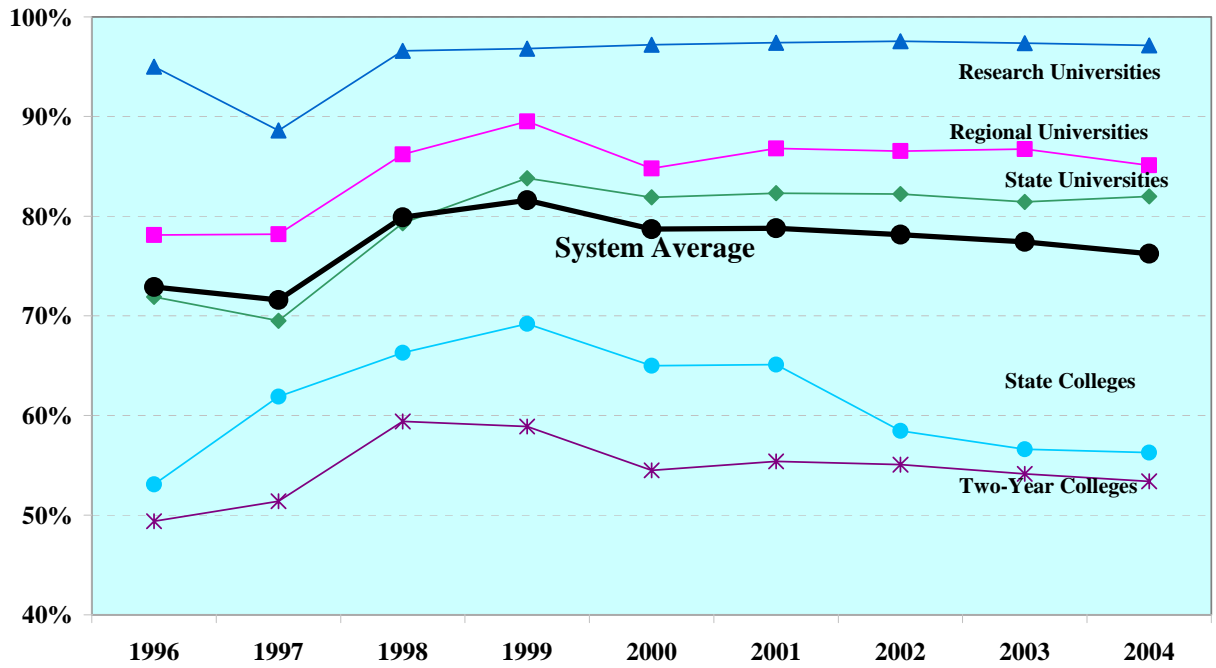
<sup>8</sup> USG HOPE Scholarship reports focus on the HOPE eligible population. An eligible student is one who, based on SIRS (Student Information Reporting System) data, is a Georgia resident who graduated from a Georgia High School in 1993 or later or someone who according to GSFC data received the HOPE scholarship in their first semester at a USG institution.

<sup>9</sup> The first two years of the HOPE Scholarship program contained income caps, limiting student participation. Consequently, we have chosen to cover Fall 1996 to Fall 2001 in this report, thus controlling the effects of the early broadening of the HOPE program.

<sup>10</sup> High school grade point average calculations to determine HOPE Scholarship eligibility are currently limited to the 16 core curriculum courses in the following subject areas: English, math, social studies, foreign language and science.

<sup>11</sup> There is a one-year time lag in officially identifying all HOPE Scholars due to retroactive award policies and year-end budget closures.

Figure 1  
**HOPE Scholars**  
**USG First-Time Freshmen**  
**by Institutional Sector and System Average**



### HOPE Scholarship Status by Institutional Sector

In Fall 2004, 79,419 USG undergraduates had the HOPE Scholarship, representing 38.2 percent of the HOPE-eligible population (see Table 1 and Figure 3). Variation by institutional sector is observed in the proportion of HOPE scholars within the HOPE-eligible population. HOPE scholars represent approximately one half of the HOPE-eligible population in both the research and regional university sectors, slightly over one third in the state university sector, and about one quarter in the state and two-year college sectors.

Table 1

Percentage of HOPE Scholarship Recipients within the HOPE-Eligible Population by Institutional Sector		
	Fall 1996	Fall 2004
Research Universities	33.9%	50.8%
Regional Universities	32.5%	46.5%
State Universities	21.4%	35.8%
State Colleges	15.8%	24.5%
Two-Year Colleges	15.7%	26.8%
System Total	24.8%	38.2%

Figure 2

### HOPE Scholarship Status by Institutional Sector USG HOPE-Eligible Undergraduates, Fall 1996

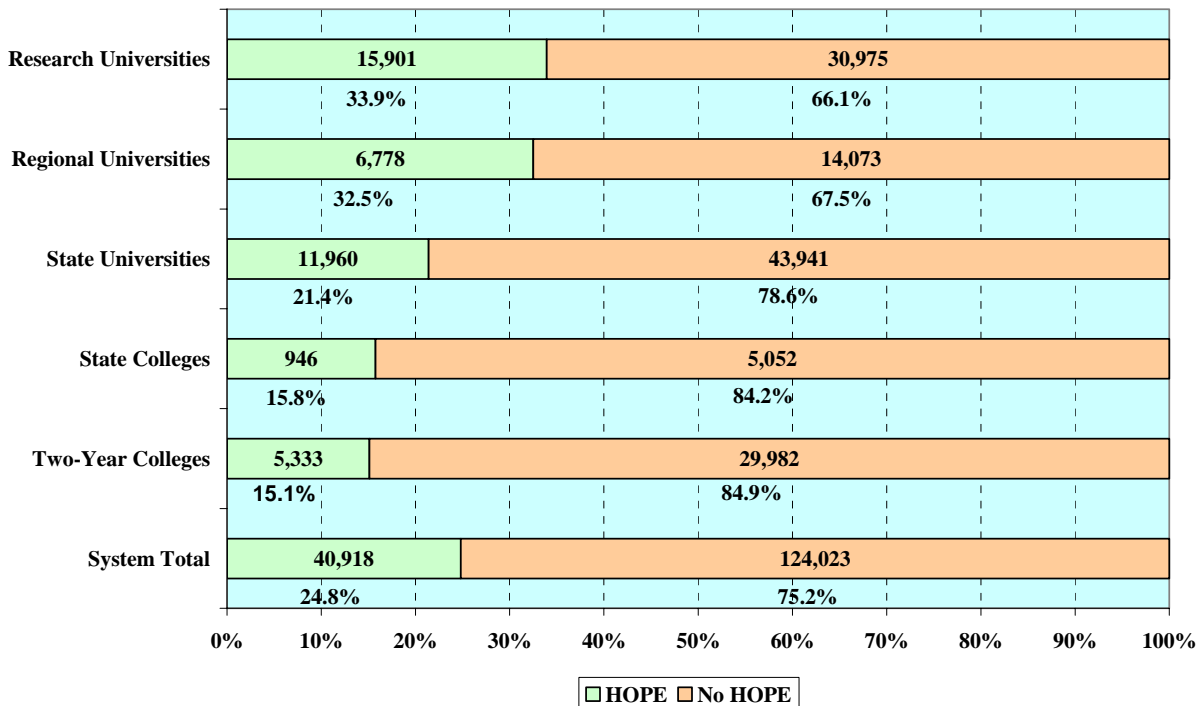
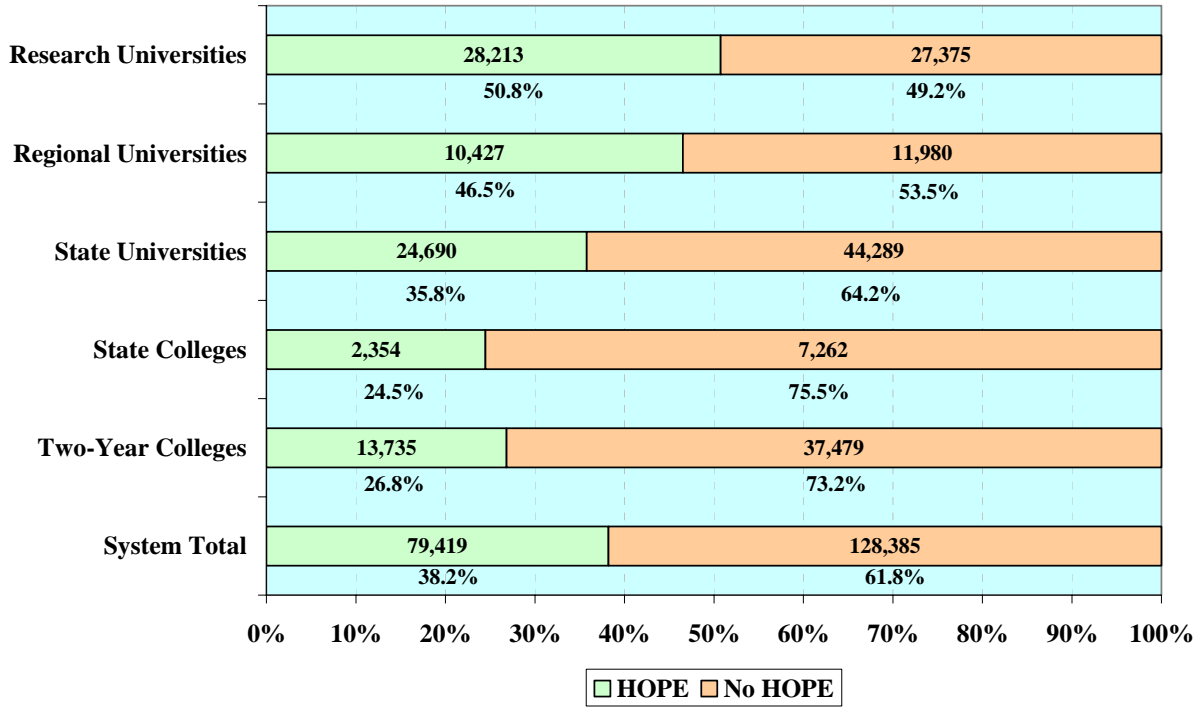


Figure 3

**HOPE Scholarship Status by Institutional Sector**  
**USG HOPE-Eligible Undergraduates, Fall 2004**



Two-year colleges experienced the largest percentage increase in the proportion of HOPE scholars by institutional sector, when comparing Fall 1996 with Fall 2004 (see Table 2). In Fall 1996, 13 percent of USG HOPE scholars were attending two-year institutions, as compared to 17.3 percent in Fall 2004. In contrast, the proportion of USG HOPE scholars at regional universities went from 16.6 percent in Fall 1996 to 13.1 percent in Fall 2004.

Table 2

<b>Proportion of HOPE Scholars by Institutional Sector</b>		
	<b>Fall 1996</b>	<b>Fall 2004</b>
<b>Research Universities</b>	38.9%	40.0%
<b>Regional Universities</b>	16.6%	13.1%
<b>State Universities</b>	29.2%	31.1%
<b>State Colleges</b>	2.3%	3.0%
<b>Two-Year Colleges</b>	13.0%	17.3%

Over 28,000 of HOPE scholars attending USG institutions in Fall 2004 were enrolled at research universities, representing 35.5 percent of the population (see Table 3 and Figure 5). An additional 24,690 scholarship recipients attended state universities. Thus, two-thirds of all HOPE scholars within the USG were enrolled in either research or state universities.

Table 3

<b>Headcounts of HOPE Scholars by Institutional Sector</b>			
	<b>Fall 1996</b>	<b>Fall 2004</b>	<b>% Change</b>
<b>Research Universities</b>	15,901	28,213	77.4%
<b>Regional Universities</b>	6,778	10,427	53.8%
<b>State Universities</b>	11,960	24,690	106.4%
<b>State Colleges</b>	946	2,354	148.8%
<b>Two-Year Colleges</b>	5,333	13,735	157.5%
<b>System Total</b>	40,918	79,419	94.1%

Figure 4

**HOPE Scholars by Institutional Sector**  
**USG Undergraduates, Fall 1996**

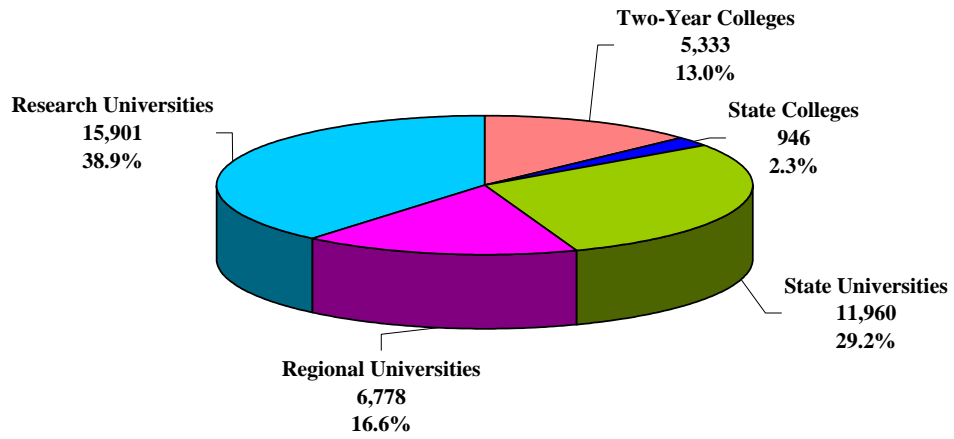
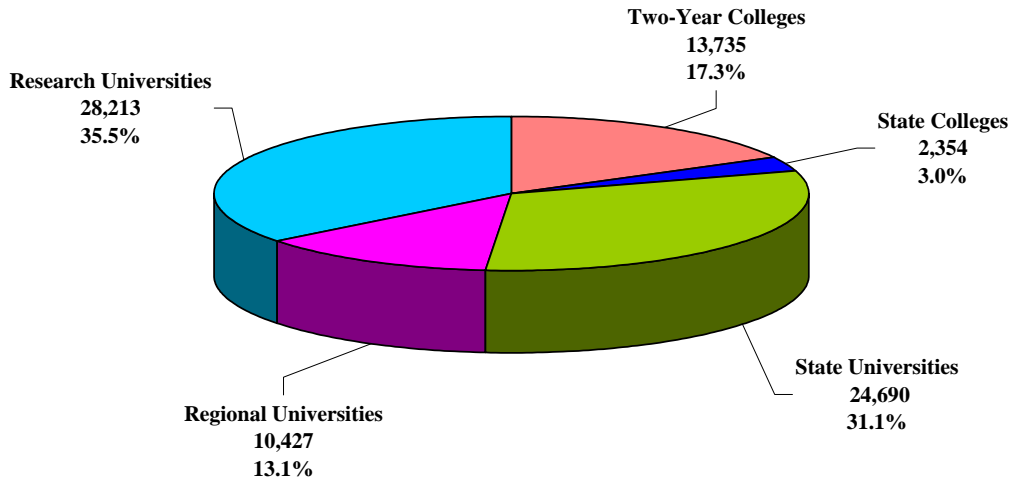


Figure 5

**HOPE Scholars by Institutional Sector**  
**USG Undergraduates, Fall 2004**



**HOPE Scholarship Status by Student Level**

Figure 4 illustrates that the proportion of HOPE scholars within the HOPE-eligible population varies by student level. In Fall 2004, slightly less than half (48 percent) of the HOPE-eligible freshman population held the scholarship. In contrast, one quarter of the HOPE-eligible senior population received the scholarship.

Table 4

<b>Percentage of HOPE Scholarship Recipients within the HOPE-Eligible Population by Student Level</b>		
	<b>Fall 1996</b>	<b>Fall 2004</b>
<b>Freshman</b>	34.6%	48.0%
<b>Sophomore</b>	18.5%	33.2%
<b>Junior</b>	23.6%	37.7%
<b>Senior</b>	13.0%	25.0%



Figure 6

**HOPE Scholarship Status by Student Level**  
**USG HOPE-Eligible Undergraduates, Fall 1996**

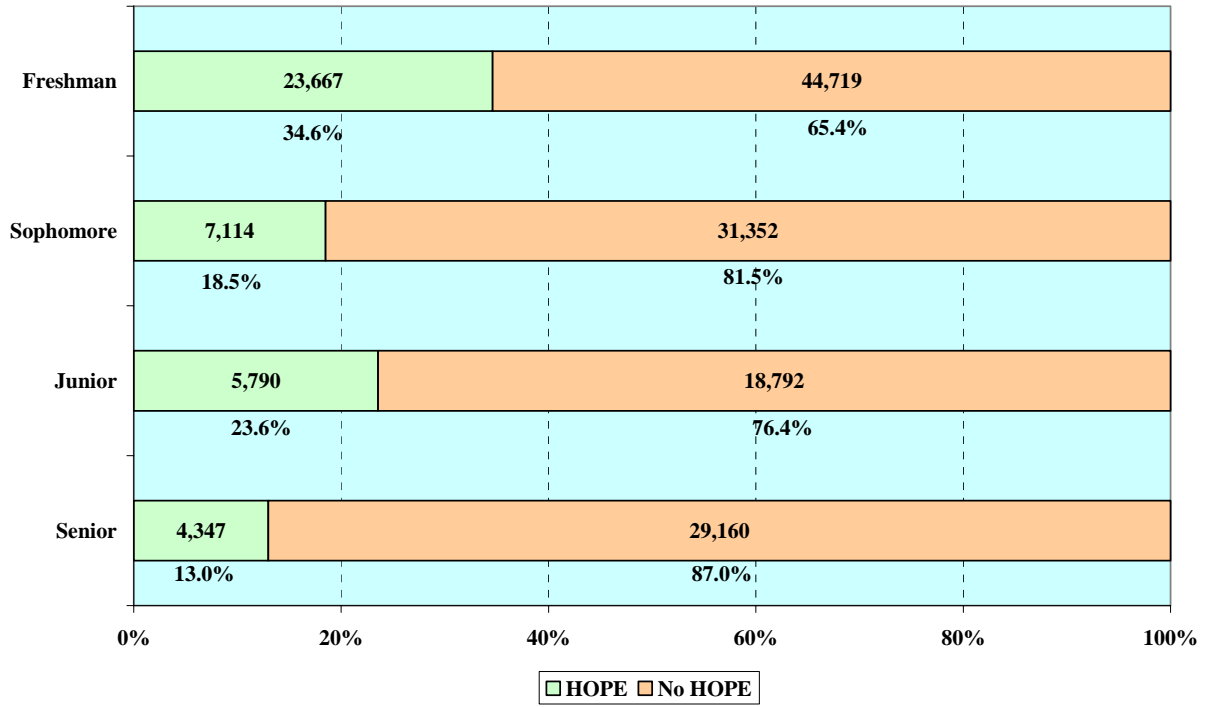
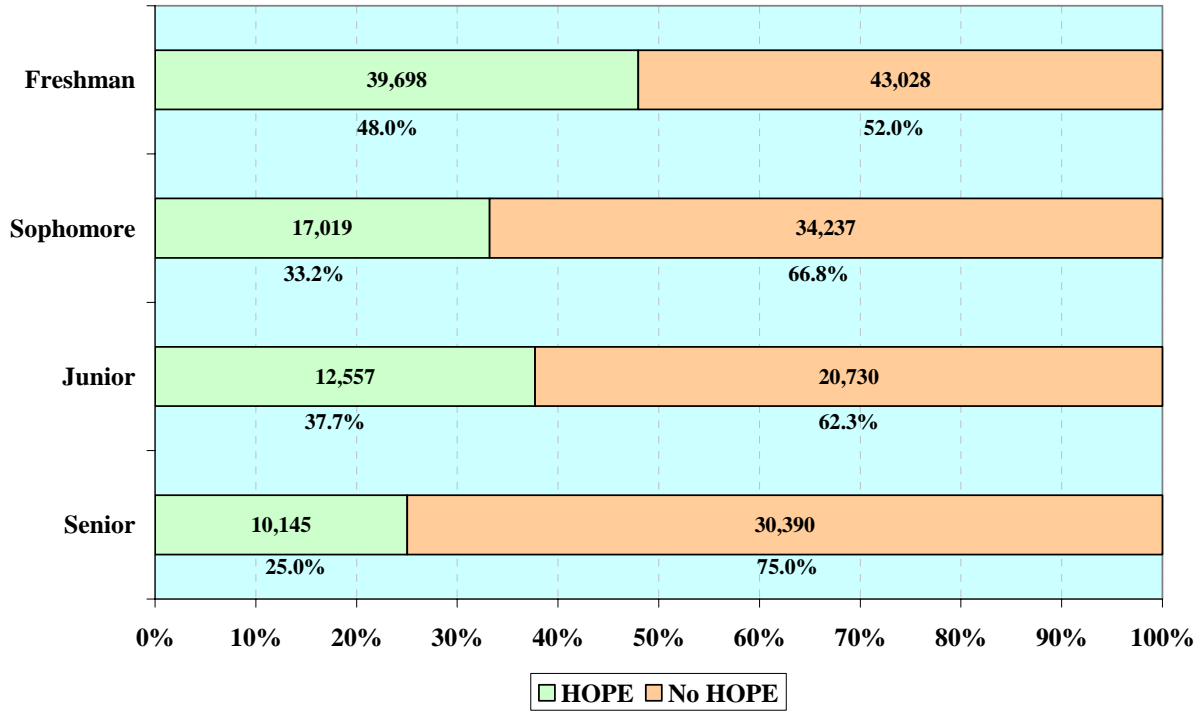


Figure 7

**HOPE Scholarship Status by Student Level**  
**USG HOPE-Eligible Undergraduates, Fall 2004**



Freshmen also account for the greatest proportion of all HOPE scholars by student level. In Fall 2004, 50 percent (39,698) of all HOPE scholars were freshmen, as compared to 12.8 percent (10,145) at the senior level (see Figure 5).

Table 5

<b>Percentage of HOPE Scholarship Recipients within the HOPE-Eligible Population by Student Level</b>		
	<b>Fall 1996</b>	<b>Fall 2004</b>
<b>Freshman</b>	57.8%	50.0%
<b>Sophomore</b>	17.4%	21.4%
<b>Junior</b>	14.2%	15.8%
<b>Senior</b>	10.6%	12.8%

Table 6

<b>Headcount of HOPE Scholarship Recipients by Student Level</b>			
	<b>Fall 1996</b>	<b>Fall 2004</b>	<b>% Change</b>
<b>Freshman</b>	23,667	39,698	67.7%
<b>Sophomore</b>	7,114	17,019	139.2%
<b>Junior</b>	5,790	12,557	116.9%
<b>Senior</b>	4,347	10,145	133.4%

Figure 8

**HOPE Scholars by Student Level**  
**USG Undergraduates, Fall 1996**

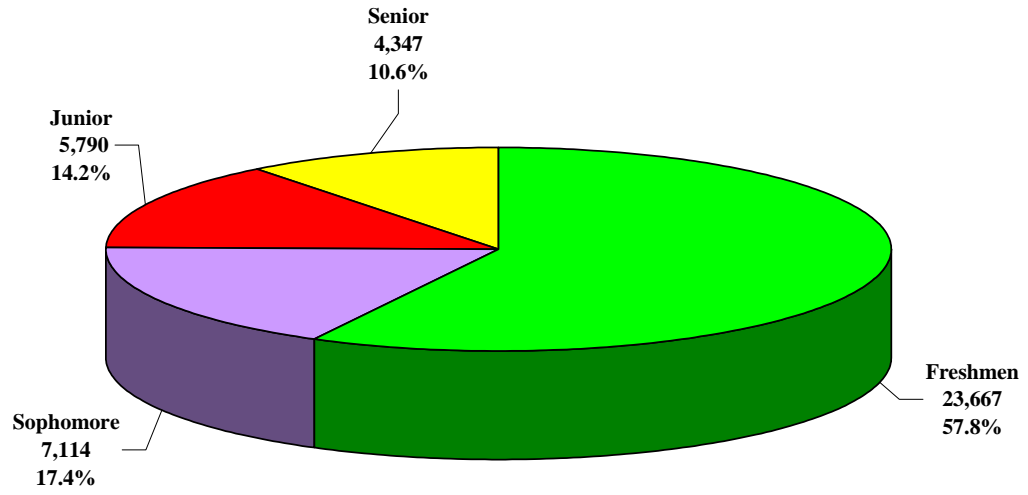
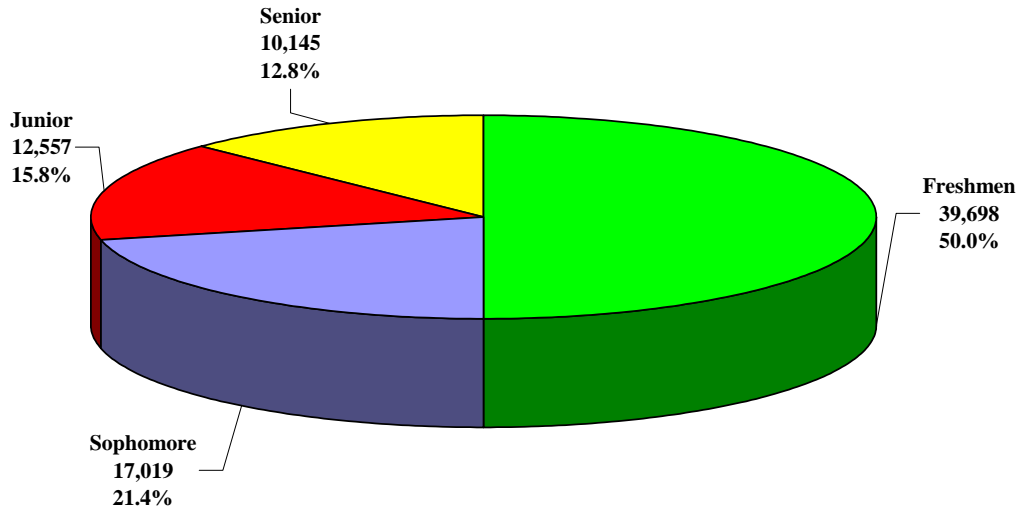


Figure 9

**HOPE Scholars by Student Level  
USG Undergraduates, Fall 2004**



**Conclusions**

Approximately 80,000 USG students benefit from the HOPE Scholarship Program in a given academic year. The Office of Strategic Research and Analysis will continue to monitor the trends in the HOPE scholar population.

For more information, write or email:

Dr. Anoush Pisani  
Senior Research Associate  
Board of Regents of the University System of Georgia  
270 Washington St., SW  
Atlanta, Georgia 30334

[Anoush.Pisani@usg.edu](mailto:Anoush.Pisani@usg.edu)

**Appendix A**  
**NASSGAP Estimated Undergraduate Grant Dollars per Undergraduate Enrollment**  
**by State: 2003-04**

<b>State</b>	<b>2003-04 Undergraduate FTE</b>	<b>Estimated Undergraduate Grant Dollars per FTE</b>
Georgia	286,818	\$1,506
South Carolina	150,087	\$1,501
New York	782,906	\$1,118
New Jersey	252,998	\$890
Kentucky	162,366	\$883
Pennsylvania	492,116	\$733
Illinois	485,132	\$716
West Virginia	74,730	\$697
Indiana	248,511	\$649
Vermont	27,064	\$634
D.C.	45,334	\$608
Louisiana	183,504	\$608
Nevada	58,135	\$594
Florida	564,266	\$579
Washington	242,196	\$554
Minnesota	220,287	\$543
North Carolina	320,225	\$489
Ohio	424,228	\$473
California	1,437,520	\$455
Michigan	389,058	\$417
Virginia	272,734	\$406
Delaware	32,776	\$388
New Mexico	77,471	\$385
Wisconsin	224,624	\$338
Connecticut	111,368	\$330
Iowa	151,498	\$325
Colorado	190,832	\$316
Arkansas	100,382	\$296
Maine	43,173	\$291
Massachusetts	275,279	\$290
Maryland	184,063	\$274
Tennessee	200,857	\$211
Rhode Island	58,496	\$210
Texas	777,888	\$201
Oklahoma	152,516	\$189
Mississippi	115,498	\$185
Missouri	223,434	\$185
Oregon	131,481	\$166
Puerto Rico	188,351	\$165
Kansas	126,460	\$111
Nebraska	81,142	\$108
Idaho	55,909	\$89
New Hampshire	47,873	\$76
Montana	37,045	\$69
North Dakota	38,202	\$46
Utah	132,683	\$31
Alabama	176,289	\$29
Arizona	261,866	\$11
Hawaii	43,688	\$9
Wyoming	21,788	\$7
Alaska	17,765	-
South Dakota	35,112	-
Nation	11,436,024	\$500

FTE data from U.S. Department of Education, National Center for Education Statistics (NCES), Integrated Postsecondary Data System (IPEDS) Fall enrollment data file, 2003

**Appendix B**  
**NASSGAP Estimated Total Number of Awards per Enrollment**  
**by State: 2003-04**

<b>State</b>	<b>Total 2003-04 FTE</b>	<b>Total Aid Awards</b>	<b>Estimated Awards per FTE</b>
Georgia	327,460	\$300,111	91.6%
Kentucky	182,474	\$115,680	63.4%
South Carolina	166,539	\$105,530	63.4%
Alaska	19,164	\$11,641	60.7%
New Mexico	87,873	\$49,692	56.5%
Nebraska	92,707	\$43,804	47.3%
Vermont	30,561	\$13,982	45.8%
Minnesota	258,747	\$114,766	44.4%
Oklahoma	169,963	\$75,362	44.3%
Puerto Rico	205,592	\$90,937	44.2%
Ohio	485,746	\$198,279	40.8%
Florida	631,506	\$253,577	40.2%
New York	935,074	\$370,657	39.6%
West Virginia	83,306	\$31,074	37.3%
New Jersey	287,618	\$106,019	36.9%
Pennsylvania	569,056	\$195,068	34.3%
Michigan	450,088	\$149,800	33.3%
Illinois	575,720	\$183,146	31.8%
Massachusetts	350,262	\$109,418	31.2%
Maine	48,161	\$14,574	30.3%
Washington	266,610	\$78,969	29.6%
Virginia	312,804	\$92,090	29.4%
North Carolina	357,624	\$95,609	26.7%
Indiana	282,629	\$74,779	26.5%
Texas	878,668	\$231,056	26.3%
Wisconsin	250,577	\$63,682	25.4%
Mississippi	126,414	\$31,636	25.0%
Louisiana	209,093	\$47,211	22.6%
Nevada	64,283	\$14,425	22.4%
Oregon	149,666	\$33,065	22.1%
Maryland	219,054	\$44,881	20.5%
Colorado	220,943	\$43,341	19.6%
Idaho	60,797	\$11,288	18.6%
Rhode Island	65,596	\$11,301	17.2%
Missouri	266,793	\$39,097	14.7%
Connecticut	134,139	\$19,298	14.4%
Iowa	170,147	\$23,589	13.9%
Arkansas	107,720	\$14,087	13.1%
Montana	39,827	\$5,061	12.7%
Tennessee	227,662	\$27,515	12.1%
D.C.	72,568	\$8,336	11.5%
California	1,639,564	\$185,946	11.3%
Hawaii	49,897	\$5,585	11.2%
New Hampshire	54,590	\$4,436	8.1%
Kansas	141,434	\$10,060	7.1%
North Dakota	41,102	\$2,812	6.8%
Alabama	200,052	\$13,374	6.7%
Utah	143,825	\$8,150	5.7%
Delaware	37,962	\$1,751	4.6%
Wyoming	23,910	\$343	1.4%
Arizona	315,317	\$4,329	1.4%
South Dakota	38,322	-	-
Nation	13,127,206	\$3,780,219	28.8%

FTE data from U.S. Department of Education, National Center for Education Statistics (NCES), Integrated Postsecondary Data System (IPEDS) Fall enrollment data file, 2003

## Appendix C Tables – Fall 1996 through Fall 2004

### University System of Georgia First-Time Freshmen with the HOPE Scholarship Fall 1996

<u>Institution Name</u>	<u>All</u>	<u>First-Time Freshmen from Georgia High Schools**</u>		
	<u>First-Time Freshmen</u>	<u>Total Freshmen</u>	<u># with HOPE</u>	<u>% with HOPE</u>
Georgia Institute of Technology	1,943	1,224	1,189	97.1
Georgia State University	1,685	1,528	1,351	88.4
University of Georgia	3,587	3,186	3,103	97.4
<i>* Research Universities</i>	7,215	5,938	5,643	95.0
Georgia Southern University	3,055	2,754	2,204	80.0
Valdosta State University	1,797	1,576	1,178	74.7
<i>* Regional Universities</i>	4,852	4,330	3,382	78.1
Albany State University	489	397	182	45.8
Armstrong Atlantic State University	1,067	606	360	59.4
Augusta State University	817	643	436	67.8
Clayton College & State University	1,035	429	284	66.2
Columbus State University	700	509	390	76.6
Fort Valley State University	612	482	234	48.5
Georgia College & State University	700	660	558	84.5
Georgia Southwestern State University	319	267	177	66.3
Kennesaw State University	1,226	992	786	79.2
North Georgia College & State University	552	507	446	88.0
Savannah State University	466	312	121	38.8
Southern Polytechnic State University	375	332	289	87.0
State University of West Georgia	1,241	1,111	951	85.6
<i>* State Universities</i>	9,599	7,247	5,214	71.9
Dalton State College	630	486	313	64.4
Macon State College	919	490	205	41.8
<i>* State Colleges</i>	1,549	976	518	53.1
Abraham Baldwin Agricultural College	724	565	323	57.2
Atlanta Metropolitan College	307	163	32	19.6
Bainbridge College	214	145	80	55.2
Coastal Georgia Community College	386	229	104	45.4
Darton College	525	376	196	52.1
East Georgia College	215	151	84	55.6
Floyd College	866	553	229	41.4
Gainesville College	457	359	257	71.6
Georgia Perimeter College	2,605	1,366	507	37.1
Gordon College	655	558	302	54.1
Middle Georgia College	637	566	306	54.1
South Georgia College	271	228	156	68.4
Waycross College	238	158	102	64.6
<i>* Two-Year Colleges</i>	8,100	5,417	2,678	49.4
<b>** System Totals</b>	<b>31,315</b>	<b>23,908</b>	<b>17,435</b>	<b>72.9</b>



**University System of Georgia**  
**First-Time Freshmen with the HOPE Scholarship**  
**Fall 1997**

<u>Institution Name</u>	<u>All First-Time Freshmen</u>	<u>First-Time Freshmen from Georgia High Schools**</u>		
		<u>Total Freshmen</u>	<u># with HOPE</u>	<u>% with HOPE</u>
Georgia Institute of Technology	1,797	1,175	1,143	97.3
Georgia State University	2,023	1,872	1,515	80.9
University of Georgia	4,226	3,740	3,356	89.7
<i>* Research Universities</i>	<i>8,046</i>	<i>6,787</i>	<i>6,014</i>	<i>88.6</i>
Georgia Southern University	2,490	2,249	1,810	80.5
Valdosta State University	1,590	1,429	1,068	74.7
<i>* Regional Universities</i>	<i>4,080</i>	<i>3,678</i>	<i>2,878</i>	<i>78.2</i>
Albany State University	552	495	293	59.2
Armstrong Atlantic State University	876	582	387	66.5
Augusta State University	807	646	367	56.8
Clayton College & State University	528	391	242	61.9
Columbus State University	664	536	420	78.4
Fort Valley State University	487	420	221	52.6
Georgia College & State University	818	739	579	78.3
Georgia Southwestern State University	499	325	197	60.6
Kennesaw State University	1,236	965	741	76.8
North Georgia College & State University	565	506	416	82.2
Savannah State University	447	325	120	36.9
Southern Polytechnic State University	400	357	294	82.4
State University of West Georgia	1,221	1,098	858	78.1
<i>* State Universities</i>	<i>9,100</i>	<i>7,385</i>	<i>5,135</i>	<i>69.5</i>
Dalton State College	537	457	340	74.4
Macon State College	657	433	211	48.7
<i>* State Colleges</i>	<i>1,194</i>	<i>890</i>	<i>551</i>	<i>61.9</i>
Abraham Baldwin Agricultural College	844	657	345	52.5
Atlanta Metropolitan College	316	175	33	18.9
Bainbridge College	148	117	72	61.5
Coastal Georgia Community College	250	176	86	48.9
Darton College	543	385	226	58.7
East Georgia College	260	208	73	35.1
Floyd College	602	473	232	49.0
Gainesville College	714	612	434	70.9
Georgia Perimeter College	1,890	1,247	500	40.1
Gordon College	904	728	410	56.3
Middle Georgia College	688	572	307	53.7
South Georgia College	284	231	139	60.2
Waycross College	199	158	95	60.1
<i>* Two-Year Colleges</i>	<i>7,642</i>	<i>5,739</i>	<i>2,952</i>	<i>51.4</i>
<b>** System Totals</b>	<b>30,062</b>	<b>24,479</b>	<b>17,530</b>	<b>71.6</b>

**University System of Georgia  
First-Time Freshmen with the HOPE Scholarship  
Fall 1998**

<u>Institution Name</u>	<u>All First-Time Freshmen</u>	<u>First-Time Freshmen from Georgia High Schools**</u>		
		<u>Total Freshmen</u>	<u># with HOPE</u>	<u>% with HOPE</u>
Georgia Institute of Technology	2,182	1,367	1,337	97.8
Georgia State University	1,592	1,494	1,365	91.4
University of Georgia	4,289	3,814	3,746	98.2
<i>* Research Universities</i>	<i>8,063</i>	<i>6,675</i>	<i>6,448</i>	<i>96.6</i>
Georgia Southern University	2,842	2,623	2,226	84.9
Valdosta State University	1,310	1,180	1,054	89.3
<i>* Regional Universities</i>	<i>4,152</i>	<i>3,803</i>	<i>3,280</i>	<i>86.2</i>
Albany State University	465	416	292	70.2
Armstrong Atlantic State University	652	487	365	74.9
Augusta State University	846	668	497	74.4
Clayton College & State University	580	442	341	77.1
Columbus State University	797	661	420	63.5
Fort Valley State University	444	380	206	54.2
Georgia College & State University	760	708	628	88.7
Georgia Southwestern State University	363	299	258	86.3
Kennesaw State University	1,182	1,017	849	83.5
North Georgia College & State University	600	563	521	92.5
Savannah State University	347	235	142	60.4
Southern Polytechnic State University	393	375	329	87.7
State University of West Georgia	1,693	1,591	1,367	85.9
<i>* State Universities</i>	<i>9,122</i>	<i>7,842</i>	<i>6,215</i>	<i>79.3</i>
Dalton State College	760	568	395	69.5
Macon State College	547	372	228	61.3
<i>* State Colleges</i>	<i>1,307</i>	<i>940</i>	<i>623</i>	<i>66.3</i>
Abraham Baldwin Agricultural College	781	624	402	64.4
Atlanta Metropolitan College	300	161	29	18.0
Bainbridge College	246	160	96	60.0
Coastal Georgia Community College	209	143	90	62.9
Darton College	591	436	257	58.9
East Georgia College	338	290	143	49.3
Floyd College	493	389	240	61.7
Gainesville College	702	621	427	68.8
Georgia Perimeter College	1,933	1,390	725	52.2
Gordon College	808	693	443	63.9
Middle Georgia College	590	475	324	68.2
South Georgia College	344	268	157	58.6
Waycross College	166	128	100	78.1
<i>* Two-Year Colleges</i>	<i>7,501</i>	<i>5,778</i>	<i>3,433</i>	<i>59.4</i>
<b>** System Totals</b>	<b>30,145</b>	<b>25,038</b>	<b>19,999</b>	<b>79.9</b>

**University System of Georgia**  
**First-Time Freshmen with the HOPE Scholarship**  
**Fall 1999**

<u>Institution Name</u>	<u>All First-Time Freshmen</u>	<u>First-Time Freshmen from Georgia High Schools**</u>		
		<u>Total Freshmen</u>	<u># with HOPE</u>	<u>% with HOPE</u>
Georgia Institute of Technology	2,323	1,414	1,376	97.3
Georgia State University	1,848	1,715	1,588	92.6
University of Georgia	4,253	3,805	3,747	98.5
<i>* Research Universities</i>	<i>8,424</i>	<i>6,934</i>	<i>6,711</i>	<i>96.8</i>
Georgia Southern University	3,243	3,044	2,709	89.0
Valdosta State University	1,196	1,053	956	90.8
<i>* Regional Universities</i>	<i>4,439</i>	<i>4,097</i>	<i>3,665</i>	<i>89.5</i>
Albany State University	678	581	448	77.1
Armstrong Atlantic State University	688	514	413	80.4
Augusta State University	832	654	502	76.8
Clayton College & State University	612	457	355	77.7
Columbus State University	727	622	522	83.9
Fort Valley State University	401	339	196	57.8
Georgia College & State University	726	694	653	94.1
Georgia Southwestern State University	268	223	206	92.4
Kennesaw State University	1,345	1,138	982	86.3
North Georgia College & State University	655	609	571	93.8
Savannah State University	327	212	142	67.0
Southern Polytechnic State University	380	341	288	84.5
State University of West Georgia	1,636	1,560	1,381	88.5
<i>* State Universities</i>	<i>9,275</i>	<i>7,944</i>	<i>6,659</i>	<i>83.8</i>
Dalton State College	736	559	415	74.2
Macon State College	597	458	289	63.1
<i>* State Colleges</i>	<i>1,333</i>	<i>1,017</i>	<i>704</i>	<i>69.2</i>
Abraham Baldwin Agricultural College	821	664	441	66.4
Atlanta Metropolitan College	324	153	35	22.9
Bainbridge College	299	192	108	56.3
Coastal Georgia Community College	205	138	84	60.9
Darton College	585	443	266	60.0
East Georgia College	409	338	159	47.0
Floyd College	517	397	257	64.7
Gainesville College	736	652	475	72.9
Georgia Perimeter College	2,140	1,546	784	50.7
Gordon College	970	795	481	60.5
Middle Georgia College	698	542	332	61.3
South Georgia College	358	283	187	66.1
Waycross College	175	135	89	65.9
<i>* Two-Year Colleges</i>	<i>8,237</i>	<i>6,278</i>	<i>3,698</i>	<i>58.9</i>
<b>** System Totals</b>	<b>31,708</b>	<b>26,270</b>	<b>21,437</b>	<b>81.6</b>

**University System of Georgia  
First-Time Freshmen with the HOPE Scholarship  
Fall 2000**

<u>Institution Name</u>	<u>All First-Time Freshmen</u>	<u>First-Time Freshmen from Georgia High Schools**</u>		
		<u>Total Freshmen</u>	<u># with HOPE</u>	<u>% with HOPE</u>
Georgia Institute of Technology	2,193	1,343	1,313	97.8
Georgia State University	2,146	1,981	1,868	94.3
University of Georgia	3,943	3,482	3,433	98.6
<i>* Research Universities</i>	8,282	6,806	6,614	97.2
Georgia Southern University	2,829	2,643	2,219	84.0
Valdosta State University	1,299	1,194	1,033	86.5
<i>* Regional Universities</i>	4,128	3,837	3,252	84.8
Albany State University	638	569	393	69.1
Armstrong Atlantic State University	606	465	375	80.6
Augusta State University	747	612	455	74.3
Clayton College & State University	641	475	350	73.7
Columbus State University	852	690	592	85.8
Fort Valley State University	382	301	190	63.1
Georgia College & State University	771	715	658	92.0
Georgia Southwestern State University	325	277	230	83.0
Kennesaw State University	1,335	1,122	934	83.2
North Georgia College & State University	628	566	525	92.8
Savannah State University	390	290	190	65.5
Southern Polytechnic State University	380	350	297	84.9
State University of West Georgia	1,671	1,597	1,377	86.8
<i>* State Universities</i>	9,366	8,019	6,566	81.9
Dalton State College	783	511	338	66.1
Macon State College	732	556	356	64.0
<i>* State Colleges</i>	1,515	1,067	694	65.0
Abraham Baldwin Agricultural College	902	721	404	56.0
Atlanta Metropolitan College	510	243	59	24.3
Bainbridge College	263	183	79	43.2
Coastal Georgia Community College	395	248	139	56.0
Darton College	637	480	274	57.1
East Georgia College	464	392	189	48.2
Floyd College	579	425	254	59.8
Gainesville College	743	650	438	67.4
Georgia Perimeter College	2,190	1,610	788	48.9
Gordon College	898	742	430	58.0
Middle Georgia College	588	515	294	57.1
South Georgia College	312	224	137	61.2
Waycross College	182	144	98	68.1
<i>* Two-Year Colleges</i>	8,663	6,577	3,583	54.5
<b>** System Totals</b>	<b>31,954</b>	<b>26,306</b>	<b>20,709</b>	<b>78.7</b>

**University System of Georgia  
First-Time Freshmen with the HOPE Scholarship  
Fall 2001**

<u>Institution Name</u>	<u>All First-Time Freshmen</u>	<u>First-Time Freshmen from Georgia High Schools**</u>		
		<u>Total Freshmen</u>	<u># with HOPE</u>	<u>% with HOPE</u>
Georgia Institute of Technology	2,205	1,316	1,280	97.3
Georgia State University	2,224	2,046	1,941	94.9
University of Georgia	4,071	3,474	3,434	98.9
<i>* Research Universities</i>	<i>8,500</i>	<i>6,836</i>	<i>6,655</i>	<i>97.4</i>
Georgia Southern University	2,612	2,448	2,121	86.6
Valdosta State University	1,572	1,432	1,245	86.9
<i>* Regional Universities</i>	<i>4,184</i>	<i>3,880</i>	<i>3,366</i>	<i>86.8</i>
Albany State University	417	363	274	75.5
Armstrong Atlantic State University	627	478	409	85.6
Augusta State University	832	646	471	72.9
Clayton College & State University	568	442	339	76.7
Columbus State University	875	708	588	83.1
Fort Valley State University	417	343	208	60.6
Georgia College & State University	858	816	737	90.3
Georgia Southwestern State University	276	235	208	88.5
Kennesaw State University	1,444	1,233	1,024	83.1
North Georgia College & State University	665	597	528	88.4
Savannah State University	487	352	227	64.5
Southern Polytechnic State University	393	364	308	84.6
State University of West Georgia	1,568	1,490	1,317	88.4
<i>* State Universities</i>	<i>9,427</i>	<i>8,067</i>	<i>6,638</i>	<i>82.3</i>
Dalton State College	858	512	345	67.4
Macon State College	733	557	351	63.0
<i>* State Colleges</i>	<i>1,591</i>	<i>1,069</i>	<i>696</i>	<i>65.1</i>
Abraham Baldwin Agricultural College	988	772	424	54.9
Atlanta Metropolitan College	370	170	54	31.8
Bainbridge College	312	209	88	42.1
Coastal Georgia Community College	472	267	137	51.3
Darton College	684	536	300	56.0
East Georgia College	478	414	225	54.4
Floyd College	715	549	309	56.3
Gainesville College	910	792	521	65.8
Georgia Perimeter College	2,563	1,842	948	51.5
Gordon College	1,021	809	488	60.3
Middle Georgia College	726	591	314	53.1
South Georgia College	331	276	171	62.0
Waycross College	174	131	100	76.3
<i>* Two-Year Colleges</i>	<i>9,744</i>	<i>7,358</i>	<i>4,079</i>	<i>55.44</i>
<b>** System Totals</b>	<b>33,446</b>	<b>27,210</b>	<b>21,434</b>	<b>78.8</b>

**University System of Georgia  
First-Time Freshmen with the HOPE Scholarship  
Fall 2002**

<u>Institution Name</u>	<u>All</u>	<u>First-Time Freshmen from Georgia High Schools**</u>		
	<u>First-Time Freshmen</u>	<u>Total Freshmen</u>	<u># with HOPE</u>	<u>% with HOPE</u>
Georgia Institute of Technology	2,248	1,313	1,280	97.5
Georgia State University	2,496	2,352	2,248	95.6
University of Georgia	3,906	3,308	3,275	99.0
<i>* Research Universities</i>	<i>8,650</i>	<i>6,973</i>	<i>6,803</i>	<i>97.6</i>
Georgia Southern University	2,509	2,378	2,067	86.9
Valdosta State University	1,594	1,494	1,284	85.9
<i>* Regional Universities</i>	<i>4,103</i>	<i>3,872</i>	<i>3,351</i>	<i>86.5</i>
Albany State University	456	408	343	84.1
Armstrong Atlantic State University	648	520	408	78.5
Augusta State University	785	669	510	76.2
Clayton College & State University	676	478	353	73.9
Columbus State University	1,030	851	705	82.8
Fort Valley State University	387	348	208	59.8
Georgia College & State University	922	885	786	88.8
Georgia Southwestern State University	330	279	236	84.6
Kennesaw State University	1,966	1,777	1,493	84.0
North Georgia College & State University	638	590	527	89.3
Savannah State University	528	441	319	72.3
Southern Polytechnic State University	379	352	288	81.8
State University of West Georgia	1,637	1,565	1,359	86.8
<i>* State Universities</i>	<i>10,382</i>	<i>9,163</i>	<i>7,535</i>	<i>82.2</i>
Dalton State College	864	613	358	58.4
Macon State College	765	591	346	58.5
<i>* State Colleges</i>	<i>1,629</i>	<i>1,204</i>	<i>704</i>	<i>58.5</i>
Abraham Baldwin Agricultural College	821	653	343	52.5
Atlanta Metropolitan College	314	167	68	40.7
Bainbridge College	282	169	75	44.4
Coastal Georgia Community College	522	372	151	40.6
Darton College	748	569	282	49.6
East Georgia College	495	451	238	52.8
Floyd College	660	528	334	63.3
Gainesville College	1,026	876	603	68.8
Georgia Perimeter College	2,888	2,147	1,130	52.6
Gordon College	990	876	505	57.7
Middle Georgia College	635	561	308	54.9
South Georgia College	408	353	195	55.2
Waycross College	168	139	97	69.8
<i>* Two-Year Colleges</i>	<i>9,957</i>	<i>7,861</i>	<i>4,329</i>	<i>55.1</i>
<b>** System Totals</b>	<b>34,721</b>	<b>29,073</b>	<b>22,722</b>	<b>78.2</b>

**University System of Georgia  
First-Time Freshmen with the HOPE Scholarship  
Fall 2003**

<u>Institution Name</u>	<u>All</u>	<u>First-Time Freshmen from Georgia High Schools**</u>		
	<u>First-Time Freshmen</u>	<u>Total Freshmen</u>	<u># with HOPE</u>	<u>% with HOPE</u>
Georgia Institute of Technology	2,206	1,457	1,413	97.0
Georgia State University	1,924	1,824	1,722	94.4
University of Georgia	4,741	3,981	3,935	98.8
<i>* Research Universities</i>	<i>8,871</i>	<i>7,262</i>	<i>7,070</i>	<i>97.4</i>
Georgia Southern University	2,708	2,571	2,232	86.8
Valdosta State University	1,740	1,679	1,454	86.6
<i>* Regional Universities</i>	<i>4,448</i>	<i>4,250</i>	<i>3,686</i>	<i>86.7</i>
Albany State University	466	412	300	72.8
Armstrong Atlantic State University	805	668	513	76.8
Augusta State University	847	712	500	70.2
Clayton College & State University	620	498	373	74.9
Columbus State University	1,166	994	819	82.4
Fort Valley State University	488	442	290	65.6
Georgia College & State University	1,013	992	894	90.1
Georgia Southwestern State University	344	284	240	84.5
Kennesaw State University	2,190	2,015	1,756	87.2
North Georgia College & State University	671	598	537	89.8
Savannah State University	609	521	350	67.2
Southern Polytechnic State University	462	434	340	78.3
State University of West Georgia	1,740	1,658	1,418	85.5
<i>* State Universities</i>	<i>11,421</i>	<i>10,228</i>	<i>8,330</i>	<i>81.4</i>
Dalton State College	851	662	378	57.1
Macon State College	799	599	336	56.1
<i>* State Colleges</i>	<i>1,650</i>	<i>1,261</i>	<i>714</i>	<i>56.6</i>
Abraham Baldwin Agricultural College	882	703	378	53.8
Atlanta Metropolitan College	350	196	55	28.1
Bainbridge College	300	184	76	41.3
Coastal Georgia Community College	687	494	194	39.3
Darton College	808	599	273	45.6
East Georgia College	454	391	180	46.0
Floyd College	668	574	343	59.8
Gainesville College	1,280	1,165	791	67.9
Georgia Perimeter College	2,776	2,090	1,097	52.5
Gordon College	1,122	1,018	627	61.69
Middle Georgia College	712	630	340	54.0
South Georgia College	376	330	152	46.1
Waycross College	231	191	132	69.1
<i>* Two-Year Colleges</i>	<i>10,646</i>	<i>8,565</i>	<i>4,638</i>	<i>54.2</i>
<b>** System Totals</b>	<b>37,036</b>	<b>31,566</b>	<b>24,438</b>	<b>77.4</b>

**University System of Georgia  
First-Time Freshmen with the HOPE Scholarship  
Fall 2004**

<u>Institution Name</u>	<u>All</u>	<u>First-Time Freshmen from Georgia High Schools**</u>		
	<u>First-Time Freshmen</u>	<u>Total Freshmen</u>	<u># with HOPE</u>	<u>% with HOPE</u>
Georgia Institute of Technology	2,568	1,572	1,528	97.2
Georgia State University	2,265	2,169	2,070	95.4
University of Georgia	4,115	3,399	3,337	98.2
<i>* Research Universities</i>	<i>8,948</i>	<i>7,140</i>	<i>6,935</i>	<i>97.1</i>
Georgia Southern University	2,807	2,652	2,261	85.3
Valdosta State University	1,693	1,611	1,367	84.9
<i>* Regional Universities</i>	<i>4,500</i>	<i>4,263</i>	<i>3,628</i>	<i>85.1</i>
Albany State University	603	550	432	78.6
Armstrong Atlantic State University	877	721	564	78.2
Augusta State University	899	794	551	69.4
Clayton State University	687	565	408	72.2
Columbus State University	1,071	889	716	80.5
Fort Valley State University	441	396	276	69.7
Georgia College & State University	917	886	829	93.6
Georgia Southwestern State University	346	294	247	84.0
Kennesaw State University	1,726	1,549	1,388	89.6
North Georgia College & State University	680	600	534	89.0
Savannah State University	608	518	352	68.0
Southern Polytechnic State University	443	418	359	85.9
University of West Georgia	1,719	1,646	1,400	85.1
<i>* State Universities</i>	<i>11,017</i>	<i>9,826</i>	<i>8,056</i>	<i>82.0</i>
Dalton State College	821	659	384	58.3
Macon State College	820	654	355	54.3
<i>* State Colleges</i>	<i>1,641</i>	<i>1,313</i>	<i>739</i>	<i>56.3</i>
Abraham Baldwin Agricultural College	987	850	464	54.6
Atlanta Metropolitan College	279	169	35	20.7
Bainbridge College	351	219	71	32.4
Coastal Georgia Community College	627	497	193	38.8
Darton College	862	665	280	42.1
East Georgia College	400	358	170	47.5
Gainesville College	1,464	1,344	916	68.2
Georgia Highlands College	801	708	428	60.5
Georgia Perimeter College	3,312	2,516	1,288	51.2
Gordon College	1,070	999	571	57.2
Middle Georgia College	749	674	365	54.2
South Georgia College	425	368	197	53.5
Waycross College	182	162	111	68.5
<i>* Two-Year Colleges</i>	<i>11,509</i>	<i>9,529</i>	<i>5,089</i>	<i>53.4</i>
<b>** System Totals</b>	<b>37,615</b>	<b>32,071</b>	<b>24,447</b>	<b>76.2</b>



**Appendix D – Fall 1996 and Fall 2004**  
**University System of Georgia**  
**Number and Percentage of HOPE Scholarship Recipients by Student Level**  
**1996**

<u>Institution</u>	<u>Freshman</u>	<u>Sophomore</u>	<u>Junior</u>	<u>Senior</u>	<u>Total - Fresh., Soph., Junr., Senr.</u>	<u>Other Undergrads</u>	<u>Graduate/ Professional</u>	<u>Other Students</u>	<u>Total Students*</u>
Georgia Institute of Technology									
Number of Students:	2,519	2,002	2,030	2,789	<b>9,340</b>	0	0	109	<b>9,449</b>
Percent Received HOPE:	57.88	28.97	23.35	17.14	<b>32.01</b>	0.00	0.00	0.00	<b>31.64</b>
Number Received HOPE:	1,458	580	474	478	<b>2,990</b>	0	0	0	<b>2,990</b>
Georgia State University									
Number of Students:	3,616	2,404	3,077	6,375	<b>15,472</b>	0	0	815	<b>16,287</b>
Percent Received HOPE:	51.60	18.72	19.11	7.17	<b>21.72</b>	0.00	0.00	0.25	<b>20.65</b>
Number Received HOPE:	1,866	450	588	457	<b>3,361</b>	0	0	2	<b>3,363</b>
Medical College of Georgia									
Number of Students:	31	55	467	271	<b>824</b>	0	0	22	<b>846</b>
Percent Received HOPE:	32.26	20.00	41.11	28.04	<b>35.07</b>	0.00	0.00	9.09	<b>34.40</b>
Number Received HOPE:	10	11	192	76	<b>289</b>	0	0	2	<b>291</b>
University of Georgia									
Number of Students:	4,886	5,123	5,215	6,016	<b>21,240</b>	1,324	0	352	<b>22,916</b>
Percent Received HOPE:	73.93	42.49	37.99	24.78	<b>43.60</b>	35.50	0.00	0.00	<b>42.46</b>
Number Received HOPE:	3,612	2,177	1,981	1,491	<b>9,261</b>	470	0	0	<b>9,731</b>
<b>Research Universities</b>									
Number of Students:	11,052	9,584	10,789	15,451	<b>46,876</b>	1,324	0	1,298	<b>49,498</b>
Percent Received HOPE:	62.85	33.58	29.98	16.19	<b>33.92</b>	35.50	0.00	0.31	<b>33.08</b>
Number Received HOPE:	6,946	3,218	3,235	2,502	<b>15,901</b>	470	0	4	<b>16,375</b>
Georgia Southern University									
Number of Students:	5,392	2,422	2,022	2,633	<b>12,469</b>	0	0	112	<b>12,581</b>
Percent Received HOPE:	55.04	22.01	17.11	10.56	<b>33.08</b>	0.00	0.00	0.00	<b>32.79</b>
Number Received HOPE:	2,968	533	346	278	<b>4,125</b>	0	0	0	<b>4,125</b>
Valdosta State University									
Number of Students:	2,911	1,616	1,434	2,421	<b>8,382</b>	0	0	27	<b>8,409</b>
Percent Received HOPE:	49.95	27.17	29.78	13.75	<b>31.65</b>	0.00	0.00	3.70	<b>31.56</b>
Number Received HOPE:	1,454	439	427	333	<b>2,653</b>	0	0	1	<b>2,654</b>
<b>Regional Universities</b>									
Number of Students:	8,303	4,038	3,456	5,054	<b>20,851</b>	0	0	139	<b>20,990</b>
Percent Received HOPE:	53.26	24.07	22.37	12.09	<b>32.51</b>	0.00	0.00	0.72	<b>32.30</b>
Number Received HOPE:	4,422	972	773	611	<b>6,778</b>	0	0	1	<b>6,779</b>
Albany State University									
Number of Students:	1,064	587	463	581	<b>2,695</b>	0	0	98	<b>2,793</b>
Percent Received HOPE:	21.15	7.50	8.64	4.13	<b>12.36</b>	0.00	0.00	0.00	<b>11.92</b>
Number Received HOPE:	225	44	40	24	<b>333</b>	0	0	0	<b>333</b>

\* This cohort includes all undergraduates (student levels 01, 02, 05, 10, 12, 20, 30, 40, and 81) plus student levels 50, 51, and Accounting and Pharmacy students at student levels 70, 72, 74, 76, and 80. This is considered to be the cohort of students who could possibly receive HOPE. Some students received HOPE even though they were graduate or professional students in SIRS because they had not yet completed a bachelor's degree and had not reached the limit of HOPE eligibility when they started pursuing a graduate degree.

**Appendix D – Fall 1996 and Fall 2004**  
**University System of Georgia**  
**Number and Percentage of HOPE Scholarship Recipients by Student Level**  
**1996**

<u>Institution</u>	<u>Freshman</u>	<u>Sophomore</u>	<u>Junior</u>	<u>Senior</u>	<u>Total - Fresh., Soph., Junr., Senr.</u>	<u>Other Undergrads</u>	<u>Graduate/ Professional</u>	<u>Other Students</u>	<u>Total Students*</u>
Armstrong Atlantic State University									
Number of Students:	1,980	1,020	819	997	<b>4,816</b>	0	0	187	<b>5,003</b>
Percent Received HOPE:	27.63	12.75	19.05	11.13	<b>19.60</b>	0.00	0.00	2.14	<b>18.95</b>
Number Received HOPE:	547	130	156	111	<b>944</b>	0	0	4	<b>948</b>
Augusta State University									
Number of Students:	1,836	1,012	797	956	<b>4,601</b>	0	0	76	<b>4,677</b>
Percent Received HOPE:	30.45	14.33	18.82	7.74	<b>20.17</b>	0.00	0.00	0.00	<b>19.84</b>
Number Received HOPE:	559	145	150	74	<b>928</b>	0	0	0	<b>928</b>
Clayton College & State University									
Number of Students:	2,341	1,025	637	566	<b>4,569</b>	39	0	67	<b>4,675</b>
Percent Received HOPE:	18.50	9.46	11.15	6.18	<b>13.92</b>	0.00	0.00	0.00	<b>13.60</b>
Number Received HOPE:	433	97	71	35	<b>636</b>	0	0	0	<b>636</b>
Columbus State University									
Number of Students:	1,688	1,014	786	1,186	<b>4,674</b>	0	0	72	<b>4,746</b>
Percent Received HOPE:	31.16	13.21	17.68	8.68	<b>19.30</b>	0.00	0.00	0.00	<b>19.01</b>
Number Received HOPE:	526	134	139	103	<b>902</b>	0	0	0	<b>902</b>
Fort Valley State University									
Number of Students:	1,381	474	305	393	<b>2,553</b>	0	0	6	<b>2,559</b>
Percent Received HOPE:	20.78	5.49	6.56	1.78	<b>13.32</b>	0.00	0.00	0.00	<b>13.29</b>
Number Received HOPE:	287	26	20	7	<b>340</b>	0	0	0	<b>340</b>
Georgia College & State University									
Number of Students:	1,342	740	1,016	1,204	<b>4,302</b>	0	0	43	<b>4,345</b>
Percent Received HOPE:	56.41	23.24	20.37	11.63	<b>29.66</b>	0.00	0.00	0.00	<b>29.37</b>
Number Received HOPE:	757	172	207	140	<b>1,276</b>	0	0	0	<b>1,276</b>
Georgia Southwestern State University									
Number of Students:	718	403	429	508	<b>2,058</b>	0	0	3	<b>2,061</b>
Percent Received HOPE:	36.07	18.61	17.48	9.45	<b>22.21</b>	0.00	0.00	0.00	<b>22.17</b>
Number Received HOPE:	259	75	75	48	<b>457</b>	0	0	0	<b>457</b>
Kennesaw State University									
Number of Students:	3,315	2,313	2,205	3,105	<b>10,938</b>	0	31	264	<b>11,233</b>
Percent Received HOPE:	38.37	15.35	17.60	8.44	<b>20.82</b>	0.00	0.00	1.52	<b>20.31</b>
Number Received HOPE:	1,272	355	388	262	<b>2,277</b>	0	0	4	<b>2,281</b>
North Georgia College & State University									
Number of Students:	844	530	626	713	<b>2,713</b>	0	0	58	<b>2,771</b>
Percent Received HOPE:	66.00	36.04	31.15	21.88	<b>40.51</b>	0.00	0.00	0.00	<b>39.66</b>
Number Received HOPE:	557	191	195	156	<b>1,099</b>	0	0	0	<b>1,099</b>

\* This cohort includes all undergraduates (student levels 01, 02, 05, 10, 12, 20, 30, 40, and 81) plus student levels 50, 51, and Accounting and Pharmacy students at student levels 70, 72, 74, 76, and 80. This is considered to be the cohort of students who could possibly receive HOPE. Some students received HOPE even though they were graduate or professional students in SIRS because they had not yet completed a bachelor's degree and had not reached the limit of HOPE eligibility when they started pursuing a graduate degree.

**Appendix D – Fall 1996 and Fall 2004**  
**University System of Georgia**  
**Number and Percentage of HOPE Scholarship Recipients by Student Level**  
**1996**

<u>Institution</u>	<u>Freshman</u>	<u>Sophomore</u>	<u>Junior</u>	<u>Senior</u>	<u>Total - Fresh., Soph., Junr., Senr.</u>	<u>Other Undergrads</u>	<u>Graduate/ Professional</u>	<u>Other Students</u>	<u>Total Students*</u>
Savannah State University									
Number of Students:	1,139	575	425	512	<b>2,651</b>	0	0	105	<b>2,756</b>
Percent Received HOPE:	13.43	5.39	8.71	9.18	<b>10.11</b>	0.00	0.00	0.95	<b>9.76</b>
Number Received HOPE:	153	31	37	47	<b>268</b>	0	0	1	<b>269</b>
Southern Polytechnic State University									
Number of Students:	822	792	793	868	<b>3,275</b>	0	0	35	<b>3,310</b>
Percent Received HOPE:	45.13	11.11	9.96	5.18	<b>17.80</b>	0.00	0.00	0.00	<b>17.61</b>
Number Received HOPE:	371	88	79	45	<b>583</b>	0	0	0	<b>583</b>
State University of West Georgia									
Number of Students:	2,459	1,148	1,036	1,413	<b>6,056</b>	0	12	51	<b>6,119</b>
Percent Received HOPE:	52.18	19.77	21.72	12.88	<b>31.65</b>	0.00	0.00	1.96	<b>31.34</b>
Number Received HOPE:	1,283	227	225	182	<b>1,917</b>	0	0	1	<b>1,918</b>
<b>State Universities</b>									
<i>Number of Students:</i>	<i>20,929</i>	<i>11,633</i>	<i>10,337</i>	<i>13,002</i>	<i>55,901</i>	<i>39</i>	<i>43</i>	<i>1,065</i>	<i>57,048</i>
<i>Percent Received HOPE:</i>	<i>34.54</i>	<i>14.74</i>	<i>17.24</i>	<i>9.49</i>	<i>21.39</i>	<i>0.00</i>	<i>0.00</i>	<i>0.94</i>	<i>20.98</i>
<i>Number Received HOPE:</i>	<i>7,229</i>	<i>1,715</i>	<i>1,782</i>	<i>1,234</i>	<i>11,960</i>	<i>0</i>	<i>0</i>	<i>10</i>	<i>11,970</i>
Dalton State College									
Number of Students:	1,553	964	0	0	<b>2,517</b>	422	0	51	<b>2,990</b>
Percent Received HOPE:	27.95	16.08	0.00	0.00	<b>23.40</b>	9.00	0.00	1.96	<b>21.00</b>
Number Received HOPE:	434	155	0	0	<b>589</b>	38	0	1	<b>628</b>
Macon State College									
Number of Students:	2,158	1,323	0	0	<b>3,481</b>	0	0	134	<b>3,615</b>
Percent Received HOPE:	12.93	5.90	0.00	0.00	<b>10.26</b>	0.00	0.00	0.75	<b>9.90</b>
Number Received HOPE:	279	78	0	0	<b>357</b>	0	0	1	<b>358</b>
<b>State Colleges</b>									
<i>Number of Students:</i>	<i>3,711</i>	<i>2,287</i>	<i>0</i>	<i>0</i>	<i>5,998</i>	<i>422</i>	<i>0</i>	<i>185</i>	<i>6,605</i>
<i>Percent Received HOPE:</i>	<i>19.21</i>	<i>10.19</i>	<i>0.00</i>	<i>0.00</i>	<i>15.77</i>	<i>9.00</i>	<i>0.00</i>	<i>1.08</i>	<i>14.93</i>
<i>Number Received HOPE:</i>	<i>713</i>	<i>233</i>	<i>0</i>	<i>0</i>	<i>946</i>	<i>38</i>	<i>0</i>	<i>2</i>	<i>986</i>
Abraham Baldwin Agricultural College									
Number of Students:	1,755	742	0	0	<b>2,497</b>	0	0	35	<b>2,532</b>
Percent Received HOPE:	27.18	12.80	0.00	0.00	<b>22.91</b>	0.00	0.00	2.86	<b>22.63</b>
Number Received HOPE:	477	95	0	0	<b>572</b>	0	0	1	<b>573</b>
Atlanta Metropolitan College									
Number of Students:	1,475	345	0	0	<b>1,820</b>	0	0	159	<b>1,979</b>
Percent Received HOPE:	3.93	0.87	0.00	0.00	<b>3.35</b>	0.00	0.00	0.00	<b>3.08</b>
Number Received HOPE:	58	3	0	0	<b>61</b>	0	0	0	<b>61</b>

\* This cohort includes all undergraduates (student levels 01, 02, 05, 10, 12, 20, 30, 40, and 81) plus student levels 50, 51, and Accounting and Pharmacy students at student levels 70, 72, 74, 76, and 80. This is considered to be the cohort of students who could possibly receive HOPE. Some students received HOPE even though they were graduate or professional students in SIRS because they had not yet completed a bachelor's degree and had not reached the limit of HOPE eligibility when they started pursuing a graduate degree.

**Appendix D – Fall 1996 and Fall 2004**  
**University System of Georgia**  
**Number and Percentage of HOPE Scholarship Recipients by Student Level**  
**1996**

<u>Institution</u>	<u>Freshman</u>	<u>Sophomore</u>	<u>Junior</u>	<u>Senior</u>	<u>Total - Fresh., Soph., Junr., Senr.</u>	<u>Other Undergrads</u>	<u>Graduate/ Professional</u>	<u>Other Students</u>	<u>Total Students*</u>
Bainbridge College									
Number of Students:	504	215	0	0	<b>719</b>	268	0	19	<b>1,006</b>
Percent Received HOPE:	30.36	14.42	0.00	0.00	<b>25.59</b>	0.75	0.00	0.00	<b>18.49</b>
Number Received HOPE:	153	31	0	0	<b>184</b>	2	0	0	<b>186</b>
Coastal Georgia Community College									
Number of Students:	682	241	0	0	<b>923</b>	767	0	140	<b>1,830</b>
Percent Received HOPE:	20.97	8.71	0.00	0.00	<b>17.77</b>	6.65	0.00	0.00	<b>11.75</b>
Number Received HOPE:	143	21	0	0	<b>164</b>	51	0	0	<b>215</b>
Darton College									
Number of Students:	1,550	875	0	0	<b>2,425</b>	0	0	56	<b>2,481</b>
Percent Received HOPE:	18.32	9.03	0.00	0.00	<b>14.97</b>	0.00	0.00	1.79	<b>14.67</b>
Number Received HOPE:	284	79	0	0	<b>363</b>	0	0	1	<b>364</b>
East Georgia College									
Number of Students:	523	170	0	0	<b>693</b>	0	0	268	<b>961</b>
Percent Received HOPE:	27.34	18.82	0.00	0.00	<b>25.25</b>	0.00	0.00	0.00	<b>18.21</b>
Number Received HOPE:	143	32	0	0	<b>175</b>	0	0	0	<b>175</b>
Floyd College									
Number of Students:	2,755	106	0	0	<b>2,861</b>	0	0	77	<b>2,938</b>
Percent Received HOPE:	17.02	2.83	0.00	0.00	<b>16.50</b>	0.00	0.00	3.90	<b>16.17</b>
Number Received HOPE:	469	3	0	0	<b>472</b>	0	0	3	<b>475</b>
Gainesville College									
Number of Students:	1,628	903	0	0	<b>2,531</b>	0	0	76	<b>2,607</b>
Percent Received HOPE:	30.41	15.73	0.00	0.00	<b>25.17</b>	0.00	0.00	0.00	<b>24.43</b>
Number Received HOPE:	495	142	0	0	<b>637</b>	0	0	0	<b>637</b>
Georgia Perimeter College									
Number of Students:	9,497	5,349	0	0	<b>14,846</b>	0	0	263	<b>15,109</b>
Percent Received HOPE:	9.74	4.84	0.00	0.00	<b>7.98</b>	0.00	0.00	0.76	<b>7.85</b>
Number Received HOPE:	925	259	0	0	<b>1,184</b>	0	0	2	<b>1,186</b>
Gordon College									
Number of Students:	1,475	669	0	0	<b>2,144</b>	0	0	24	<b>2,168</b>
Percent Received HOPE:	29.49	17.49	0.00	0.00	<b>25.75</b>	0.00	0.00	0.00	<b>25.46</b>
Number Received HOPE:	435	117	0	0	<b>552</b>	0	0	0	<b>552</b>
Middle Georgia College									
Number of Students:	1,306	670	0	0	<b>1,976</b>	0	0	20	<b>1,996</b>
Percent Received HOPE:	31.62	18.06	0.00	0.00	<b>27.02</b>	0.00	0.00	0.00	<b>26.75</b>
Number Received HOPE:	413	121	0	0	<b>534</b>	0	0	0	<b>534</b>

\* This cohort includes all undergraduates (student levels 01, 02, 05, 10, 12, 20, 30, 40, and 81) plus student levels 50, 51, and Accounting and Pharmacy students at student levels 70, 72, 74, 76, and 80. This is considered to be the cohort of students who could possibly receive HOPE. Some students received HOPE even though they were graduate or professional students in SIRS because they had not yet completed a bachelor's degree and had not reached the limit of HOPE eligibility when they started pursuing a graduate degree.

**Appendix D – Fall 1996 and Fall 2004**  
**University System of Georgia**  
**Number and Percentage of HOPE Scholarship Recipients by Student Level**  
**1996**

<u>Institution</u>	<u>Freshman</u>	<u>Sophomore</u>	<u>Junior</u>	<u>Senior</u>	<u>Total - Fresh., Soph., Junr., Senr.</u>	<u>Other Undergrads</u>	<u>Graduate/ Professional</u>	<u>Other Students</u>	<u>Total Students*</u>
South Georgia College									
Number of Students:	630	471	0	0	1,101	0	0	11	1,112
Percent Received HOPE:	33.49	9.77	0.00	0.00	23.34	0.00	0.00	0.00	23.11
Number Received HOPE:	211	46	0	0	257	0	0	0	257
Waycross College									
Number of Students:	611	168	0	0	779	0	0	28	807
Percent Received HOPE:	24.71	16.07	0.00	0.00	22.85	0.00	0.00	3.57	22.18
Number Received HOPE:	151	27	0	0	178	0	0	1	179
<i>Two-Year Colleges</i>									
Number of Students:	24,391	10,924	0	0	35,315	1,035	0	1,176	37,526
Percent Received HOPE:	17.86	8.93	0.00	0.00	15.10	5.12	0.00	0.68	14.37
Number Received HOPE:	4,357	976	0	0	5,333	53	0	8	5,394
<b>System Totals</b>									
<b>Number of Students:</b>	<b>68,386</b>	<b>38,466</b>	<b>24,582</b>	<b>33,507</b>	<b>164,941</b>	<b>2,820</b>	<b>43</b>	<b>3,863</b>	<b>171,667</b>
<b>Percent Received HOPE:</b>	<b>34.61</b>	<b>18.49</b>	<b>23.55</b>	<b>12.97</b>	<b>24.81</b>	<b>19.89</b>	<b>0.00</b>	<b>0.65</b>	<b>24.18</b>
<b>Number Received HOPE:</b>	<b>23,667</b>	<b>7,114</b>	<b>5,790</b>	<b>4,347</b>	<b>40,918</b>	<b>561</b>	<b>0</b>	<b>25</b>	<b>41,504</b>

\* This cohort includes all undergraduates (student levels 01, 02, 05, 10, 12, 20, 30, 40, and 81) plus student levels 50, 51, and Accounting and Pharmacy students at student levels 70, 72, 74, 76, and 80. This is considered to be the cohort of students who could possibly receive HOPE. Some students received HOPE even though they were graduate or professional students in SIRS because they had not yet completed a bachelor's degree and had not reached the limit of HOPE eligibility when they started pursuing a graduate degree.

**Appendix D – Fall 1996 and Fall 2004**  
**University System of Georgia**  
**Number and Percentage of HOPE Scholarship Recipients by Student Level**

**Fall 2004**

<u>Institution</u>	<u>Freshman</u>	<u>Sophomore</u>	<u>Junior</u>	<u>Senior</u>	<u>Total - Fresh., Soph., Junr., Senr.</u>	<u>Other Undergrads</u>	<u>Graduate/ Professional</u>	<u>Other Students</u>	<u>Total Students*</u>
Georgia Institute of Technology									
Number of Students:	3,127	2,309	2,488	3,430	<b>11,354</b>	0	0	180	<b>11,534</b>
Percent Received HOPE:	56.99	38.72	35.17	27.61	<b>39.62</b>	0.00	0.00	0.00	<b>39.00</b>
Number Received HOPE:	1,782	894	875	947	<b>4,498</b>	0	0	0	<b>4,498</b>
Georgia State University									
Number of Students:	3,936	3,666	4,567	6,750	<b>18,919</b>	0	0	660	<b>19,579</b>
Percent Received HOPE:	71.77	29.87	25.16	14.16	<b>31.85</b>	0.00	0.00	0.00	<b>30.77</b>
Number Received HOPE:	2,825	1,095	1,149	956	<b>6,025</b>	0	0	0	<b>6,025</b>
Medical College of Georgia									
Number of Students:	0	15	375	310	<b>700</b>	0	0	30	<b>730</b>
Percent Received HOPE:	0.00	0.00	38.13	21.94	<b>30.14</b>	0.00	0.00	0.00	<b>28.90</b>
Number Received HOPE:	0	0	143	68	<b>211</b>	0	0	0	<b>211</b>
University of Georgia									
Number of Students:	5,659	5,317	6,401	7,238	<b>24,615</b>	0	656	382	<b>25,653</b>
Percent Received HOPE:	79.87	69.63	62.54	48.31	<b>63.87</b>	0.00	32.62	1.05	<b>62.14</b>
Number Received HOPE:	4,520	3,702	4,003	3,497	<b>15,722</b>	0	214	4	<b>15,940</b>
<b>Research Universities</b>									
<i>Number of Students:</i>	<i>12,722</i>	<i>11,307</i>	<i>13,831</i>	<i>17,728</i>	<i>55,588</i>	<i>0</i>	<i>656</i>	<i>1,252</i>	<i>57,496</i>
<i>Percent Received HOPE:</i>	<i>71.74</i>	<i>50.33</i>	<i>44.61</i>	<i>30.84</i>	<i>47.59</i>	<i>0.00</i>	<i>32.62</i>	<i>0.32</i>	<i>46.39</i>
<i>Number Received HOPE:</i>	<i>9,127</i>	<i>5,691</i>	<i>6,170</i>	<i>5,468</i>	<i>26,456</i>	<i>0</i>	<i>214</i>	<i>4</i>	<i>26,674</i>
Georgia Southern University									
Number of Students:	5,055	2,961	2,591	2,913	<b>13,520</b>	0	65	490	<b>14,075</b>
Percent Received HOPE:	68.96	33.81	30.76	24.41	<b>44.34</b>	0.00	10.77	0.41	<b>42.66</b>
Number Received HOPE:	3,486	1,001	797	711	<b>5,995</b>	0	7	2	<b>6,004</b>
Valdosta State University									
Number of Students:	3,015	1,782	1,843	2,247	<b>8,887</b>	0	0	77	<b>8,964</b>
Percent Received HOPE:	69.62	44.33	40.86	27.90	<b>48.04</b>	0.00	0.00	5.19	<b>47.67</b>
Number Received HOPE:	2,099	790	753	627	<b>4,269</b>	0	0	4	<b>4,273</b>
<b>Regional Universities</b>									
<i>Number of Students:</i>	<i>8,070</i>	<i>4,743</i>	<i>4,434</i>	<i>5,160</i>	<i>22,407</i>	<i>0</i>	<i>65</i>	<i>567</i>	<i>23,039</i>
<i>Percent Received HOPE:</i>	<i>69.21</i>	<i>37.76</i>	<i>34.96</i>	<i>25.93</i>	<i>45.81</i>	<i>0.00</i>	<i>10.77</i>	<i>1.06</i>	<i>44.61</i>
<i>Number Received HOPE:</i>	<i>5,585</i>	<i>1,791</i>	<i>1,550</i>	<i>1,338</i>	<i>10,264</i>	<i>0</i>	<i>7</i>	<i>6</i>	<i>10,277</i>
Albany State University									
Number of Students:	1,110	666	584	804	<b>3,164</b>	0	0	46	<b>3,210</b>
Percent Received HOPE:	49.73	24.17	24.32	12.44	<b>30.18</b>	0.00	0.00	0.00	<b>29.75</b>
Number Received HOPE:	552	161	142	100	<b>955</b>	0	0	0	<b>955</b>

\* This cohort includes all undergraduates (student levels 01, 02, 05, 10, 12, 20, 30, 40, and 81) plus student levels 50, 51, and Accounting and Pharmacy students at student levels 70, 72, 74, 76, and 80. This is considered to be the cohort of students who could possibly receive HOPE. Some students received HOPE even though they were graduate or professional students in SIRS because they had not yet completed a bachelor's degree and had not reached the limit of HOPE eligibility when they started pursuing a graduate degree.

**Appendix D – Fall 1996 and Fall 2004**  
**University System of Georgia**  
**Number and Percentage of HOPE Scholarship Recipients by Student Level**

**Fall 2004**

<u>Institution</u>	<u>Freshman</u>	<u>Sophomore</u>	<u>Junior</u>	<u>Senior</u>	<u>Total - Fresh., Soph., Junr., Senr.</u>	<u>Other Undergrads</u>	<u>Graduate/ Professional</u>	<u>Other Students</u>	<u>Total Students*</u>
Armstrong Atlantic State University									
Number of Students:	2,065	1,288	1,092	1,275	<b>5,720</b>	0	0	330	<b>6,050</b>
Percent Received HOPE:	37.72	19.64	21.43	15.37	<b>25.56</b>	0.00	0.00	0.61	<b>24.20</b>
Number Received HOPE:	779	253	234	196	<b>1,462</b>	0	0	2	<b>1,464</b>
Augusta State University									
Number of Students:	2,228	1,154	951	1,023	<b>5,356</b>	0	0	52	<b>5,408</b>
Percent Received HOPE:	37.70	13.86	11.88	9.78	<b>22.65</b>	0.00	0.00	0.00	<b>22.43</b>
Number Received HOPE:	840	160	113	100	<b>1,213</b>	0	0	0	<b>1,213</b>
Clayton College & State University									
Number of Students:	1,818	1,308	1,274	1,503	<b>5,903</b>	0	0	30	<b>5,933</b>
Percent Received HOPE:	36.14	19.88	19.47	11.58	<b>22.68</b>	0.00	0.00	0.00	<b>22.57</b>
Number Received HOPE:	657	260	248	174	<b>1,339</b>	0	0	0	<b>1,339</b>
Columbus State University									
Number of Students:	2,373	1,368	1,120	1,391	<b>6,252</b>	0	0	24	<b>6,276</b>
Percent Received HOPE:	50.23	29.97	27.23	16.68	<b>34.21</b>	0.00	0.00	8.33	<b>34.11</b>
Number Received HOPE:	1,192	410	305	232	<b>2,139</b>	0	0	2	<b>2,141</b>
Fort Valley State University									
Number of Students:	947	460	394	499	<b>2,300</b>	0	0	6	<b>2,306</b>
Percent Received HOPE:	43.19	21.09	4.06	1.40	<b>23.00</b>	0.00	0.00	0.00	<b>22.94</b>
Number Received HOPE:	409	97	16	7	<b>529</b>	0	0	0	<b>529</b>
Georgia College & State University									
Number of Students:	1,540	924	990	1,054	<b>4,508</b>	0	35	34	<b>4,577</b>
Percent Received HOPE:	82.34	45.78	41.62	31.31	<b>53.97</b>	0.00	0.00	11.76	<b>53.24</b>
Number Received HOPE:	1,268	423	412	330	<b>2,433</b>	0	0	4	<b>2,437</b>
Georgia Southwestern State University									
Number of Students:	673	366	431	588	<b>2,058</b>	0	0	9	<b>2,067</b>
Percent Received HOPE:	53.79	25.96	26.45	19.73	<b>33.38</b>	0.00	0.00	0.00	<b>33.24</b>
Number Received HOPE:	362	95	114	116	<b>687</b>	0	0	0	<b>687</b>
Kennesaw State University									
Number of Students:	4,527	3,673	3,368	4,240	<b>15,808</b>	0	97	109	<b>16,014</b>
Percent Received HOPE:	0.00	0.00	0.00	0.00	<b>0.00</b>	0.00	0.00	0.00	<b>0.00</b>
Number Received HOPE:	0	0	0	0	<b>0</b>	0	0	0	<b>0</b>
North Georgia College & State University									
Number of Students:	1,228	798	931	1,015	<b>3,972</b>	0	0	31	<b>4,003</b>
Percent Received HOPE:	63.52	46.62	39.53	30.25	<b>46.00</b>	0.00	0.00	9.68	<b>45.72</b>
Number Received HOPE:	780	372	368	307	<b>1,827</b>	0	0	3	<b>1,830</b>

\* This cohort includes all undergraduates (student levels 01, 02, 05, 10, 12, 20, 30, 40, and 81) plus student levels 50, 51, and Accounting and Pharmacy students at student levels 70, 72, 74, 76, and 80. This is considered to be the cohort of students who could possibly receive HOPE. Some students received HOPE even though they were graduate or professional students in SIRS because they had not yet completed a bachelor's degree and had not reached the limit of HOPE eligibility when they started pursuing a graduate degree.

**Appendix D – Fall 1996 and Fall 2004**  
**University System of Georgia**  
**Number and Percentage of HOPE Scholarship Recipients by Student Level**

**Fall 2004**

<u>Institution</u>	<u>Freshman</u>	<u>Sophomore</u>	<u>Junior</u>	<u>Senior</u>	<u>Total - Fresh., Soph., Junr., Senr.</u>	<u>Other Undergrads</u>	<u>Graduate/ Professional</u>	<u>Other Students</u>	<u>Total Students*</u>
Savannah State University									
Number of Students:	1,130	558	438	501	<b>2,627</b>	0	0	30	<b>2,657</b>
Percent Received HOPE:	43.98	17.03	14.16	5.59	<b>25.96</b>	0.00	0.00	0.00	<b>25.67</b>
Number Received HOPE:	497	95	62	28	<b>682</b>	0	0	0	<b>682</b>
Southern Polytechnic State University									
Number of Students:	835	705	656	986	<b>3,182</b>	0	0	60	<b>3,242</b>
Percent Received HOPE:	52.57	21.84	15.24	6.29	<b>23.73</b>	0.00	0.00	18.33	<b>23.63</b>
Number Received HOPE:	439	154	100	62	<b>755</b>	0	0	11	<b>766</b>
State University of West Georgia									
Number of Students:	3,316	1,652	1,548	1,613	<b>8,129</b>	0	15	55	<b>8,199</b>
Percent Received HOPE:	66.44	28.03	30.43	25.79	<b>43.71</b>	0.00	0.00	1.82	<b>43.35</b>
Number Received HOPE:	2,203	463	471	416	<b>3,553</b>	0	0	1	<b>3,554</b>
<b>State Universities</b>									
<i>Number of Students:</i>	23,790	14,920	13,777	16,492	<b>68,979</b>	0	147	816	<b>69,942</b>
<i>Percent Received HOPE:</i>	41.94	19.73	18.76	12.54	<b>25.48</b>	0.00	0.00	2.82	<b>25.16</b>
<i>Number Received HOPE:</i>	9,978	2,943	2,585	2,068	<b>17,574</b>	0	0	23	<b>17,597</b>
Dalton State College									
Number of Students:	2,241	1,132	441	299	<b>4,113</b>	0	0	73	<b>4,186</b>
Percent Received HOPE:	30.39	23.67	32.43	16.72	<b>27.77</b>	0.00	0.00	1.37	<b>27.31</b>
Number Received HOPE:	681	268	143	50	<b>1,142</b>	0	0	1	<b>1,143</b>
Macon State College									
Number of Students:	2,735	1,108	804	856	<b>5,503</b>	0	0	134	<b>5,637</b>
Percent Received HOPE:	24.06	19.49	15.80	9.11	<b>19.61</b>	0.00	0.00	7.46	<b>19.32</b>
Number Received HOPE:	658	216	127	78	<b>1,079</b>	0	0	10	<b>1,089</b>
<b>State Colleges</b>									
<i>Number of Students:</i>	4,976	2,240	1,245	1,155	<b>9,616</b>	0	0	207	<b>9,823</b>
<i>Percent Received HOPE:</i>	26.91	21.61	21.69	11.08	<b>23.10</b>	0.00	0.00	5.31	<b>22.72</b>
<i>Number Received HOPE:</i>	1,339	484	270	128	<b>2,221</b>	0	0	11	<b>2,232</b>
Abraham Baldwin Agricultural College									
Number of Students:	1,961	1,335	0	0	<b>3,296</b>	0	0	14	<b>3,310</b>
Percent Received HOPE:	34.22	24.94	0.00	0.00	<b>30.46</b>	0.00	0.00	14.29	<b>30.39</b>
Number Received HOPE:	671	333	0	0	<b>1,004</b>	0	0	2	<b>1,006</b>
Atlanta Metropolitan College									
Number of Students:	1,212	529	0	0	<b>1,741</b>	0	0	60	<b>1,801</b>
Percent Received HOPE:	6.85	4.73	0.00	0.00	<b>6.20</b>	0.00	0.00	0.00	<b>6.00</b>
Number Received HOPE:	83	25	0	0	<b>108</b>	0	0	0	<b>108</b>

\* This cohort includes all undergraduates (student levels 01, 02, 05, 10, 12, 20, 30, 40, and 81) plus student levels 50, 51, and Accounting and Pharmacy students at student levels 70, 72, 74, 76, and 80. This is considered to be the cohort of students who could possibly receive HOPE. Some students received HOPE even though they were graduate or professional students in SIRS because they had not yet completed a bachelor's degree and had not reached the limit of HOPE eligibility when they started pursuing a graduate degree.



**Appendix D – Fall 1996 and Fall 2004**  
**University System of Georgia**  
**Number and Percentage of HOPE Scholarship Recipients by Student Level**

**Fall 2004**

<u>Institution</u>	<u>Freshman</u>	<u>Sophomore</u>	<u>Junior</u>	<u>Senior</u>	<u>Total - Fresh., Soph., Junr., Senr.</u>	<u>Other Undergrads</u>	<u>Graduate/ Professional</u>	<u>Other Students</u>	<u>Total Students*</u>
Bainbridge College									
Number of Students:	1,508	786	0	0	2,294	0	0	3	2,297
Percent Received HOPE:	14.06	19.85	0.00	0.00	16.04	0.00	0.00	0.00	16.02
Number Received HOPE:	212	156	0	0	368	0	0	0	368
Coastal Georgia Community College									
Number of Students:	1,785	859	0	0	2,644	0	0	164	2,808
Percent Received HOPE:	19.61	21.89	0.00	0.00	20.35	0.00	0.00	7.32	19.59
Number Received HOPE:	350	188	0	0	538	0	0	12	550
Darton College									
Number of Students:	2,455	1,541	0	0	3,996	0	0	70	4,066
Percent Received HOPE:	0.00	0.00	0.00	0.00	0.00	0.00	0.00	0.00	0.00
Number Received HOPE:	0	0	0	0	0	0	0	0	0
East Georgia College									
Number of Students:	1,017	250	0	0	1,267	0	0	22	1,289
Percent Received HOPE:	31.17	15.20	0.00	0.00	28.02	0.00	0.00	9.09	27.70
Number Received HOPE:	317	38	0	0	355	0	0	2	357
Floyd College									
Number of Students:	2,212	1,033	0	0	3,245	0	0	61	3,306
Percent Received HOPE:	0.00	0.00	0.00	0.00	0.00	0.00	0.00	0.00	0.00
Number Received HOPE:	0	0	0	0	0	0	0	0	0
Gainesville College									
Number of Students:	3,575	1,925	0	0	5,500	0	0	94	5,594
Percent Received HOPE:	45.79	30.23	0.00	0.00	40.35	0.00	0.00	24.47	40.08
Number Received HOPE:	1,637	582	0	0	2,219	0	0	23	2,242
Georgia Perimeter College									
Number of Students:	11,963	7,216	0	0	19,179	0	0	509	19,688
Percent Received HOPE:	0.00	0.00	0.00	0.00	0.00	0.00	0.00	0.00	0.00
Number Received HOPE:	0	0	0	0	0	0	0	0	0
Gordon College									
Number of Students:	2,326	1,047	0	0	3,373	0	0	13	3,386
Percent Received HOPE:	36.59	29.99	0.00	0.00	34.54	0.00	0.00	15.38	34.47
Number Received HOPE:	851	314	0	0	1,165	0	0	2	1,167
Middle Georgia College									
Number of Students:	1,687	795	0	0	2,482	0	0	30	2,512
Percent Received HOPE:	31.24	28.18	0.00	0.00	30.26	0.00	0.00	13.33	30.06
Number Received HOPE:	527	224	0	0	751	0	0	4	755

\* This cohort includes all undergraduates (student levels 01, 02, 05, 10, 12, 20, 30, 40, and 81) plus student levels 50, 51, and Accounting and Pharmacy students at student levels 70, 72, 74, 76, and 80. This is considered to be the cohort of students who could possibly receive HOPE. Some students received HOPE even though they were graduate or professional students in SIRS because they had not yet completed a bachelor's degree and had not reached the limit of HOPE eligibility when they started pursuing a graduate degree.

**Appendix D – Fall 1996 and Fall 2004**  
**University System of Georgia**  
**Number and Percentage of HOPE Scholarship Recipients by Student Level**

**Fall 2004**

<u>Institution</u>	<u>Freshman</u>	<u>Sophomore</u>	<u>Junior</u>	<u>Senior</u>	<u>Total - Fresh., Soph., Junr., Senr.</u>	<u>Other Undergrads</u>	<u>Graduate/ Professional</u>	<u>Other Students</u>	<u>Total Students*</u>
South Georgia College									
Number of Students:	924	476	0	0	1,400	0	0	18	1,418
Percent Received HOPE:	32.90	25.84	0.00	0.00	30.50	0.00	0.00	11.11	30.25
Number Received HOPE:	304	123	0	0	427	0	0	2	429
Waycross College									
Number of Students:	543	254	0	0	797	0	0	199	996
Percent Received HOPE:	38.31	31.50	0.00	0.00	36.14	0.00	0.00	1.51	29.22
Number Received HOPE:	208	80	0	0	288	0	0	3	291
<i>Two-Year Colleges</i>									
Number of Students:	33,168	18,046	0	0	51,214	0	0	1,257	52,471
Percent Received HOPE:	15.56	11.43	0.00	0.00	14.10	0.00	0.00	3.98	13.86
Number Received HOPE:	5,160	2,063	0	0	7,223	0	0	50	7,273
<b>System Totals</b>									
<b>Number of Students:</b>	<b>82,726</b>	<b>51,256</b>	<b>33,287</b>	<b>40,535</b>	<b>207,804</b>	<b>0</b>	<b>868</b>	<b>4,099</b>	<b>212,771</b>
<b>Percent Received HOPE:</b>	<b>37.70</b>	<b>25.31</b>	<b>31.77</b>	<b>22.21</b>	<b>30.67</b>	<b>0.00</b>	<b>25.46</b>	<b>2.29</b>	<b>30.10</b>
<b>Number Received HOPE:</b>	<b>31,189</b>	<b>12,972</b>	<b>10,575</b>	<b>9,002</b>	<b>63,738</b>	<b>0</b>	<b>221</b>	<b>94</b>	<b>64,053</b>

\* This cohort includes all undergraduates (student levels 01, 02, 05, 10, 12, 20, 30, 40, and 81) plus student levels 50, 51, and Accounting and Pharmacy students at student levels 70, 72, 74, 76, and 80. This is considered to be the cohort of students who could possibly receive HOPE. Some students received HOPE even though they were graduate or professional students in SIRS because they had not yet completed a bachelor's degree and had not reached the limit of HOPE eligibility when they started pursuing a graduate degree.