

SOUTHERN POLYTECHNIC
STATE UNIVERSITY

Southern Polytechnic State University

Parking Deck
Engineering Technology Center
Architecture Studio Addition Design II
Building I Renovation



SOUTHERN POLYTECHNIC STATE UNIVERSITY



P PARKING

Residential Only: Lots 8-14 & 28

Commuter Only: Lot 22 White Spaces Only
Lots 29, 30, 35, 37, & 38

Faculty/Staff Only: Lots 3, 4, 6, 7, 20-25, 36

Visitors Only: Lot 2, with spaces in 7, 12, and Lot 60 Parking Deck

Open: Lots 17-19 & 40-42

Parking Deck: Lot 60 - Student, Visitor & Paying Staff Only



CAMPUS INDEX

- H Academic Building
- B Administration Building
- N Architecture Building
- J Atrium Building
- S10 Baseball Shed / Storage
- S11 Baseball Shed / Storage
- S12 Baseball Shed / Storage
- L Civil Engineering Tech Building
- LI Civil Engineering Soils Lab
- K1, 2 & 3 Clarence Arrison MET Building Complex
- R100 Commons 100
- R200 Commons 200
- R300 Commons 300
- R400 Commons 400
- R500 Commons 500
- R600 Commons 600
- K1000 Courtyard 1000
- K2000 Courtyard 2000
- K3000 Courtyard 3000
- E Crawford Lab Building
- I1 Design Building 1
- I2 Design Building 2
- G Engineering Lab Building
- Q Engineering Technology Center
- F1 Facilities - Administration
- F2 Facilities - Cart & Archive File Storage
- F8 Facilities - Central Receiving
- F9 Facilities - Grounds Storage
- F4 Facilities - Grounds & Vehicle Shop
- F6 Facilities - Large Vehicle Storage
- F7 Facilities - Maintenance Shop
- F3 Facilities - Small Vehicle Storage
- S2 Gymnasium
- R701 Hornet Village 1
- R702 Hornet Village 2
- R10 Housing Office
- R1 Howell Hall
- A Joe Mack Wilson Student Center
- C Lawrence V. Johnson Library
- D Mathematics Building
- R1 Norton Hall
- S1 Recreation & Wellness Center
- R20 Retail Eatery
- R30 Resident Community Center
- S3 Soccer and Recreation Storage
- O Student Competition Team Building
- U The Lodge
- R4001 University Columns 1
- R4002 University Columns 2
- R4003 University Columns 3
- R4004 University Columns 4
- R4005 University Columns 5
- R4006 University Columns 6
- R4007 University Columns 7
- R4008 University Columns 8
- R4009 University Columns 9
- R4010 University Columns 10
- R4011 University Columns Activity Center
- M W. Clair Harris Textile Center
- T Wilder Communications Center
- X Singer's Restaurant

SOUTHERN POLYTECHNIC STATE UNIVERSITY



SOUTHERN POLYTECHNIC STATE UNIVERSITY



**SOUTHERN POLYTECHNIC
STATE UNIVERSITY**

Dining Hall, Phase III Student Housing, & Special Interest Housing Team

Hendessi & Associates, Program Manager

Ambling University Development Group, Developer

Niles Bolton Associates, Inc., Architect, Interior Designer,
Landscape Architect

Juneau Construction Company, General Contractor

Browder + LeGuizamon & Associates, Inc., Structural Engineering

Jordan & Skala Engineers, Inc., MEP Engineering

Haines Gipson & Associates, Civil Engineering

Energy Ace, Inc., LEED Consulting and Commissioning (Suite
Style Housing and Dining Hall)

Southface, LEED Consulting and Commissioning (Special Interest
Housing)

J & A Engineering, Security and Technology Engineering



SOUTHERN POLYTECHNIC STATE UNIVERSITY

7,700 SF)
 2,545 GROSS SF)
 ED (SINGLE OCCUPANCY)
 ED (DOUBLE OCCUPANCY)
 IDENT MANAGER BEDS

7,955 GROSS SF)
 ED (SINGLE OCCUPANCY)
 ED (DOUBLE OCCUPANCY)

JECT BEDS

D)
 MITS-8.06 ACRES
 MITS-1.97 ACRES



SOUTHERN POLYTECHNIC STATE UNIVERSITY



Marking Deck Team

Hal Gibson Companies, Program Manager

H.J. Russell and Company, Design Build Contractor

Timothy Haahs and Associates, Designer and Structural Engineer

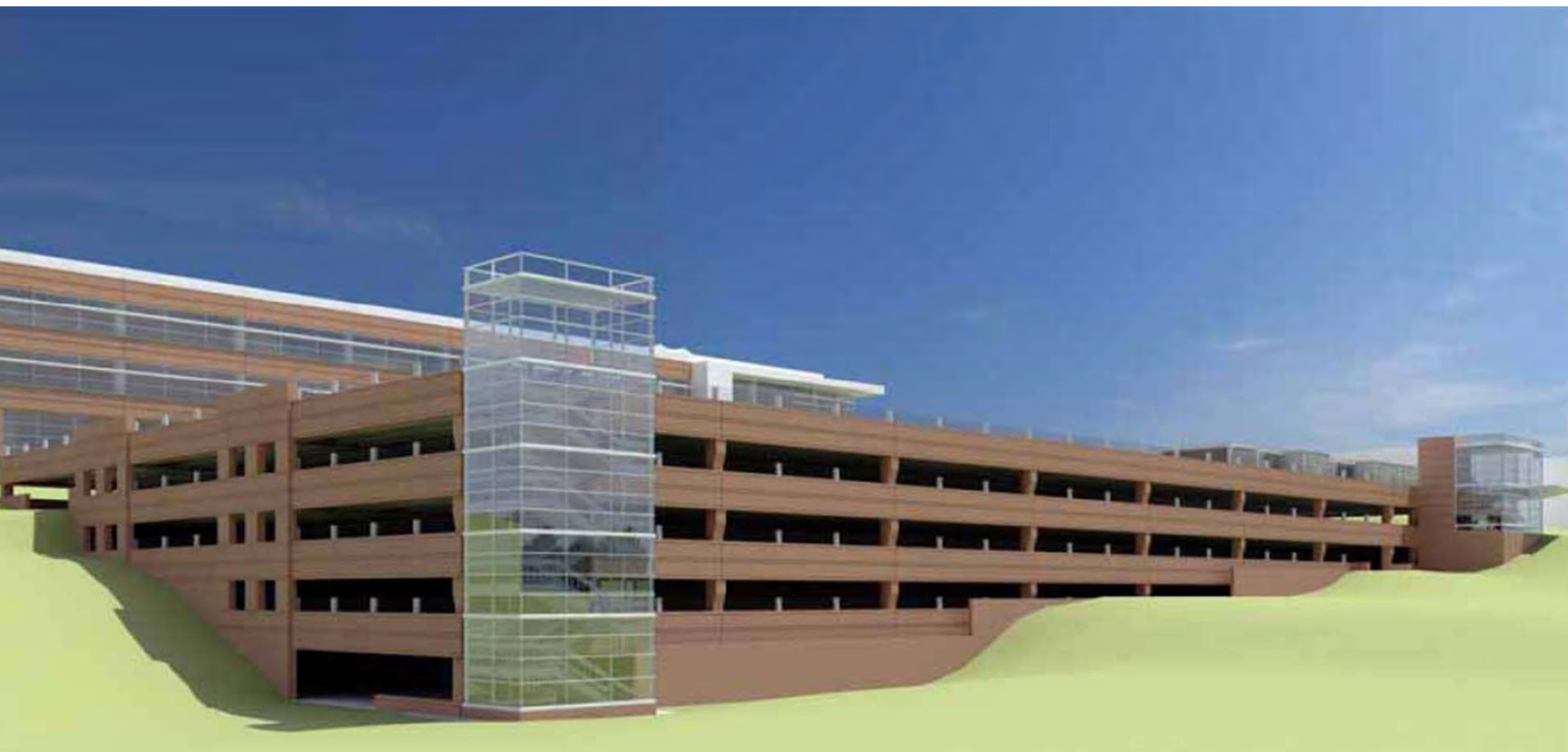
Cooper Carry, Inc., Consulting Architect

LBGM and Associates, Civil Engineering

GTP Consulting Engineers, Mechanical, Electrical, and Plumbing
Engineering



**SOUTHERN POLYTECHNIC
STATE UNIVERSITY**



273,000 square feet
800 spaces

**SOUTHERN POLYTECHNIC
STATE UNIVERSITY**



**SOUTHERN POLYTECHNIC
STATE UNIVERSITY**



Engineering Technology Center (ETC), Design II & Building I Team

Hal Gibson Company, Program Manager

Cooper Carry Inc., Architect, Interior Designer, & Landscape Architect

Paul Cheeks, Associate Architects

DPR Construction, General Contractor

Uzun & Case Engineers, LLC, Structural Engineering

Johnson, Spellman and Assoc., Mechanical & Plumbing Engineering

ENG Group, Inc., Electrical Engineering

LBGM Associates, Inc., Civil Engineering

Johnston Design Group, LEED Consulting

EMC Engineers, Inc., LEED Commissioning

Rolf Jensen & Associates, Life Safety Consulting

Waveguide, AV & IT Consulting

Arpeggio, LLC, Acoustics Consulting

Engineering Technology Center (ETC) Overview

122,000 square feet

LEED Silver

Will house

- Computer Engineering Technology
- Electrical Engineering Technology
- Mechanical Engineering Technology
- Telecommunications Engineering Technology
- Mechatronics Engineering

**SOUTHERN POLYTECHNIC
STATE UNIVERSITY**



**SOUTHERN POLYTECHNIC
STATE UNIVERSITY**



**SOUTHERN POLYTECHNIC
STATE UNIVERSITY**



**SOUTHERN POLYTECHNIC
STATE UNIVERSITY**



**SOUTHERN POLYTECHNIC
STATE UNIVERSITY**



**SOUTHERN POLYTECHNIC
STATE UNIVERSITY**



Architecture Studio Addition Design II

Designed as studios for 2nd year students for School of Architecture .

Guiding Principles

The studio should be a contiguous space.

The “loggia” should encourage interaction, connectivity and community.

Flow between Building I and the Addition should be intuitive & clear.

The building should serve as a teaching tool.

The building should create a strong identity for School.

The design should accommodate future growth.

Sustainability should inform the design.

Program Overview

4,500 SF

LEED Silver/Gold

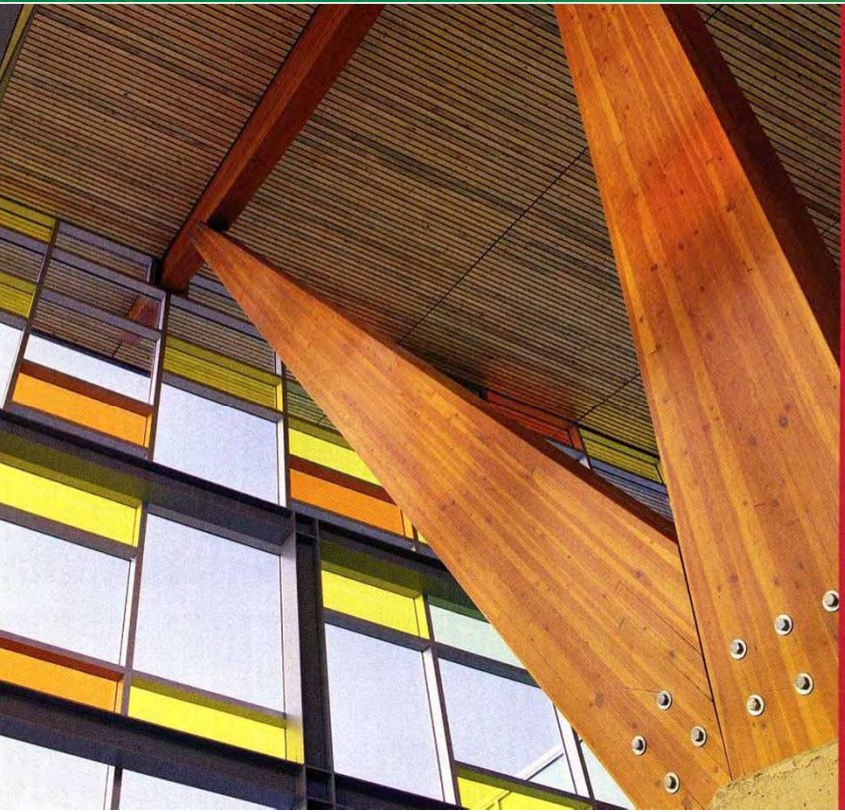
16 individual studios with 16 desk each

Faculty Offices

36 seat Auditorium

Informal outdoor studio

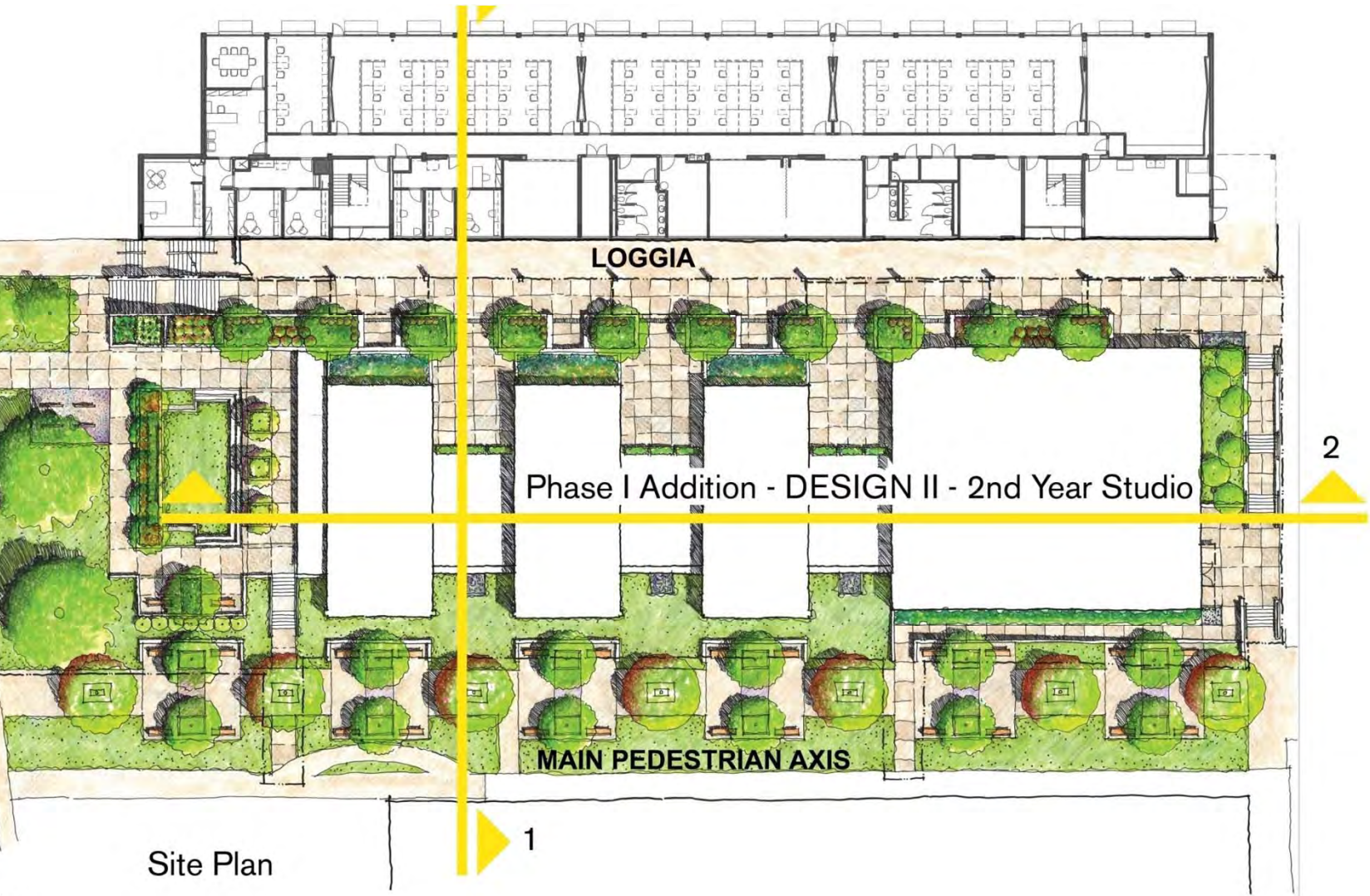
SOUTHERN POLYTECHNIC STATE UNIVERSITY



SOUTHERN POLYTECHNIC STATE UNIVERSITY

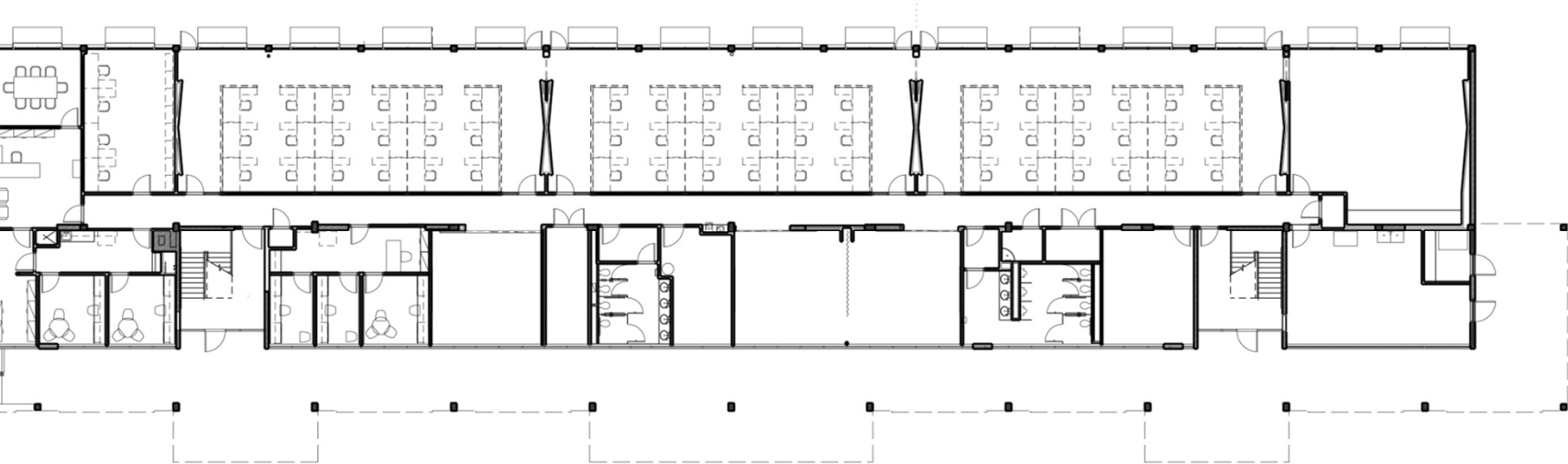


SOUTHERN POLYTECHNIC STATE UNIVERSITY

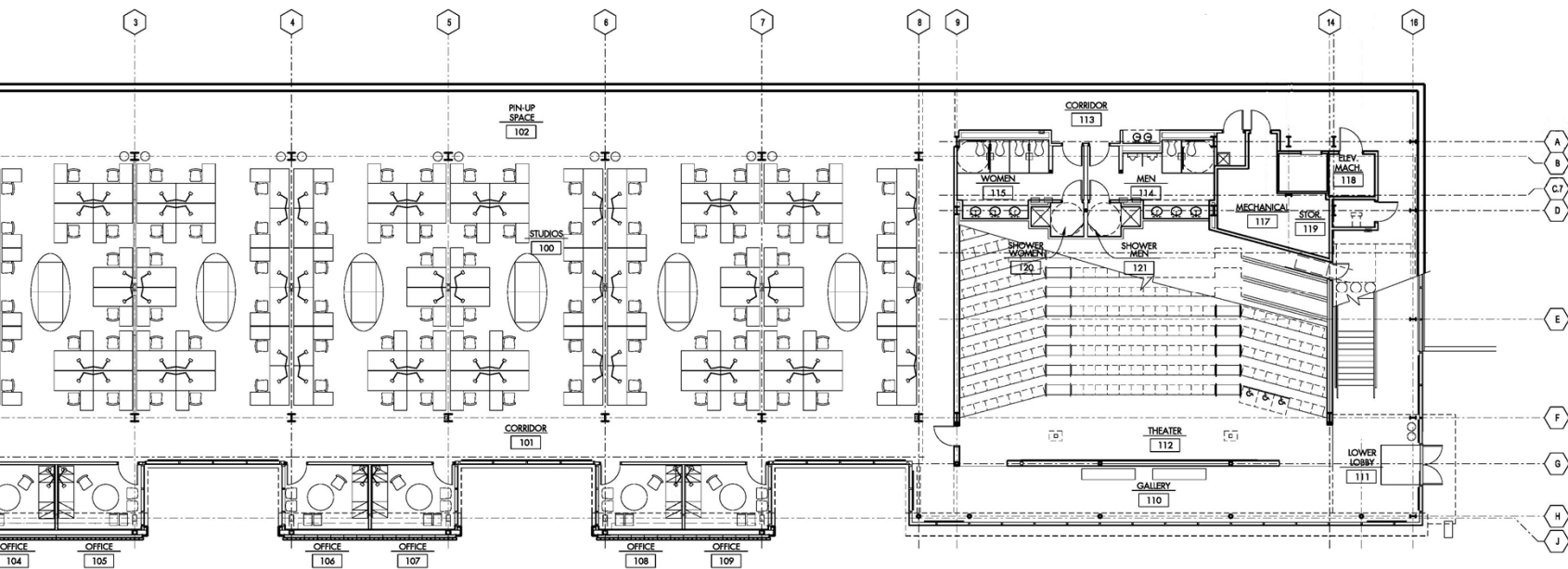


Site Plan

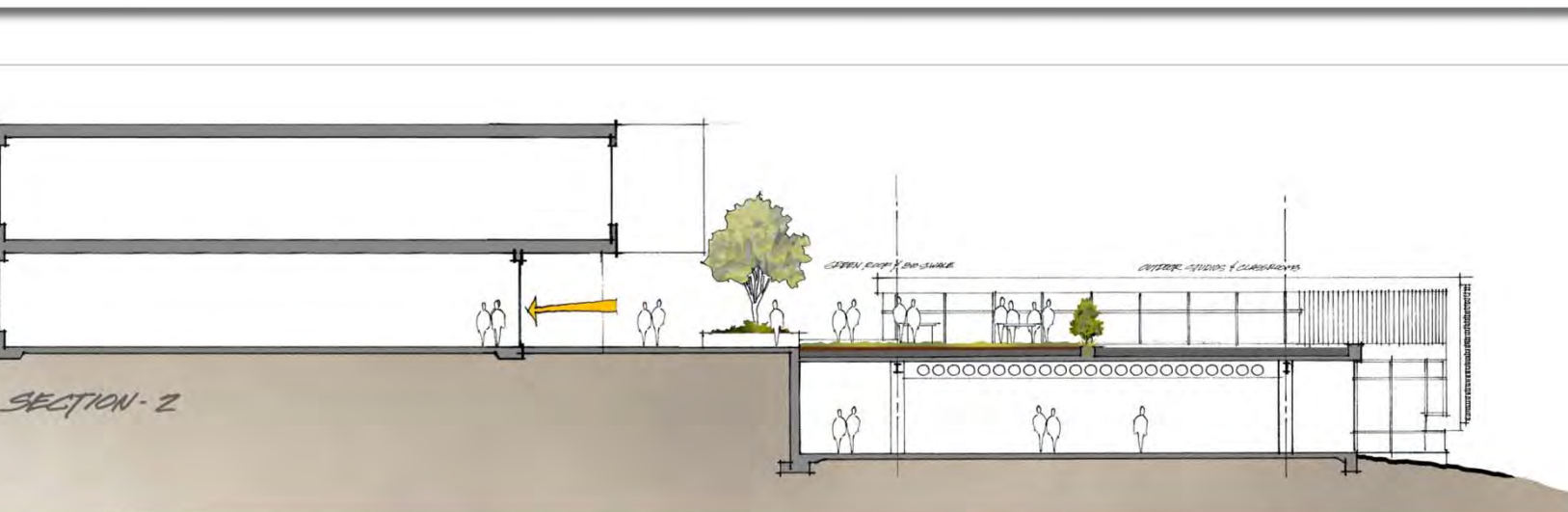
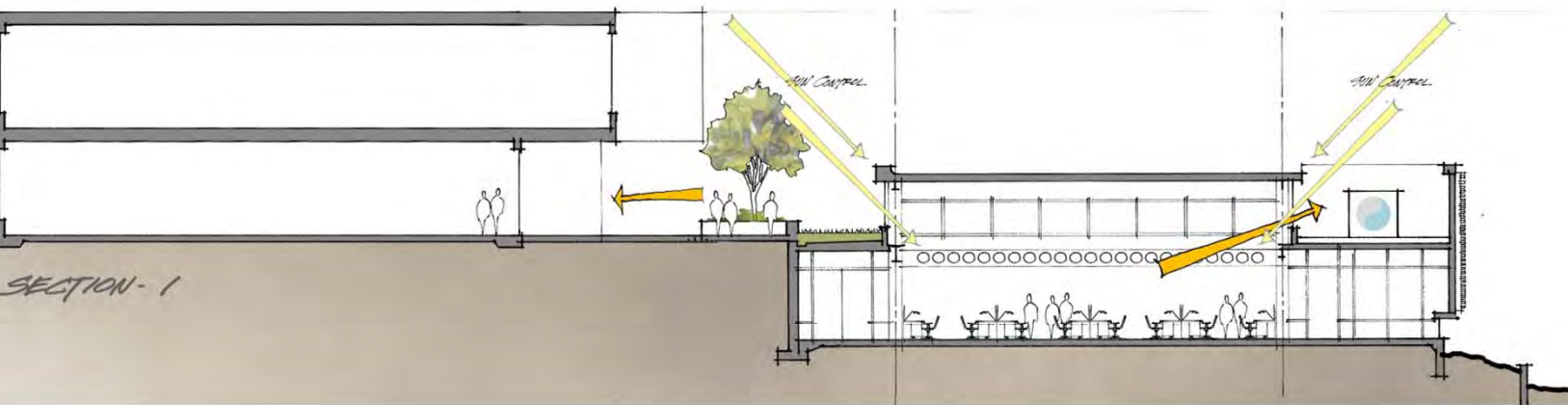
**SOUTHERN POLYTECHNIC
STATE UNIVERSITY**



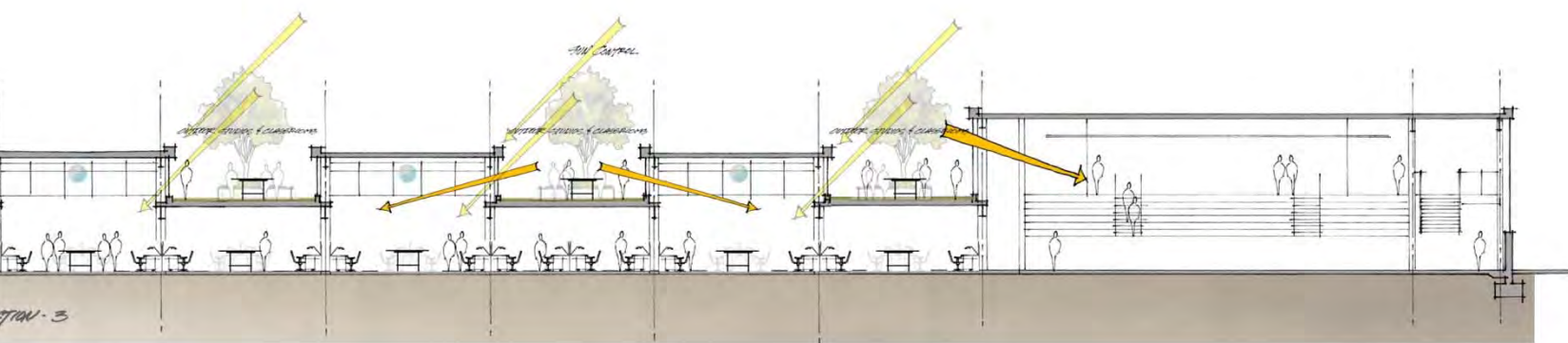
SOUTHERN POLYTECHNIC STATE UNIVERSITY



SOUTHERN POLYTECHNIC STATE UNIVERSITY



SOUTHERN POLYTECHNIC STATE UNIVERSITY



SOUTHERN POLYTECHNIC STATE UNIVERSITY

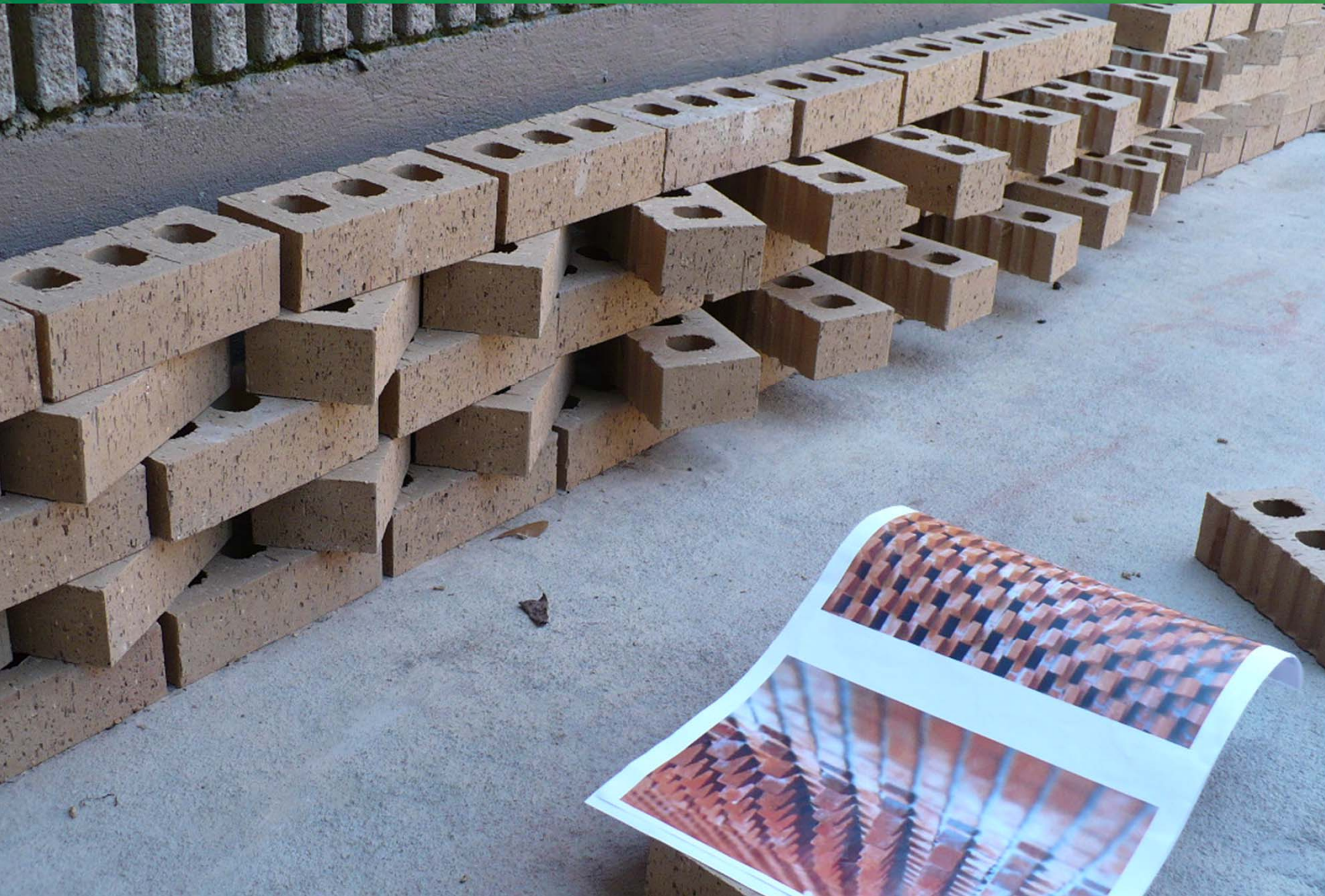


SOUTHERN POLYTECHNIC
STATE UNIVERSITY





SOUTHERN POLYTECHNIC
STATE UNIVERSITY



**SOUTHERN POLYTECHNIC
STATE UNIVERSITY**





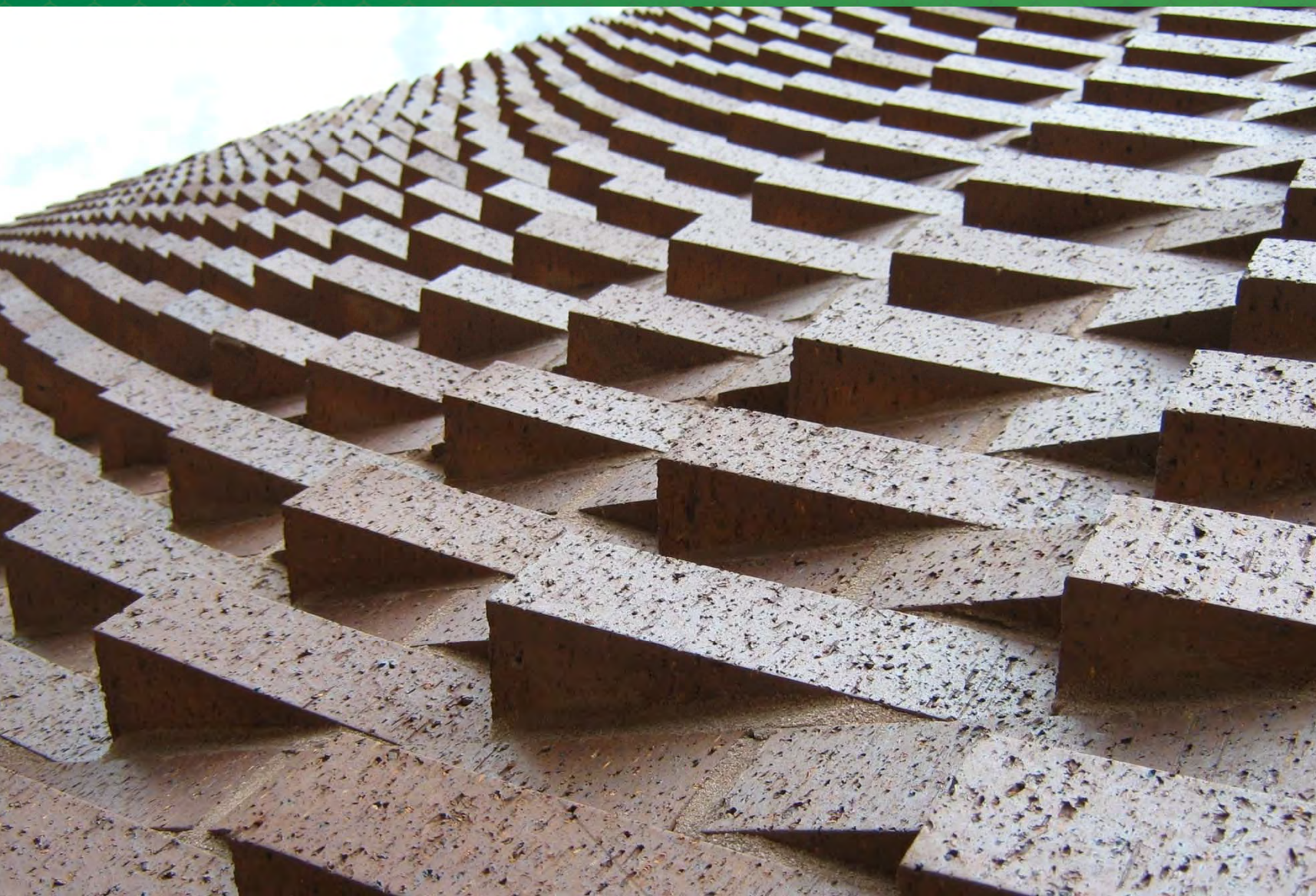


06.29.2010 12:34

**SOUTHERN POLYTECHNIC
STATE UNIVERSITY**



**SOUTHERN POLYTECHNIC
STATE UNIVERSITY**



**SOUTHERN POLYTECHNIC
STATE UNIVERSITY**



**SOUTHERN POLYTECHNIC
STATE UNIVERSITY**



**SOUTHERN POLYTECHNIC
STATE UNIVERSITY**



**SOUTHERN POLYTECHNIC
STATE UNIVERSITY**



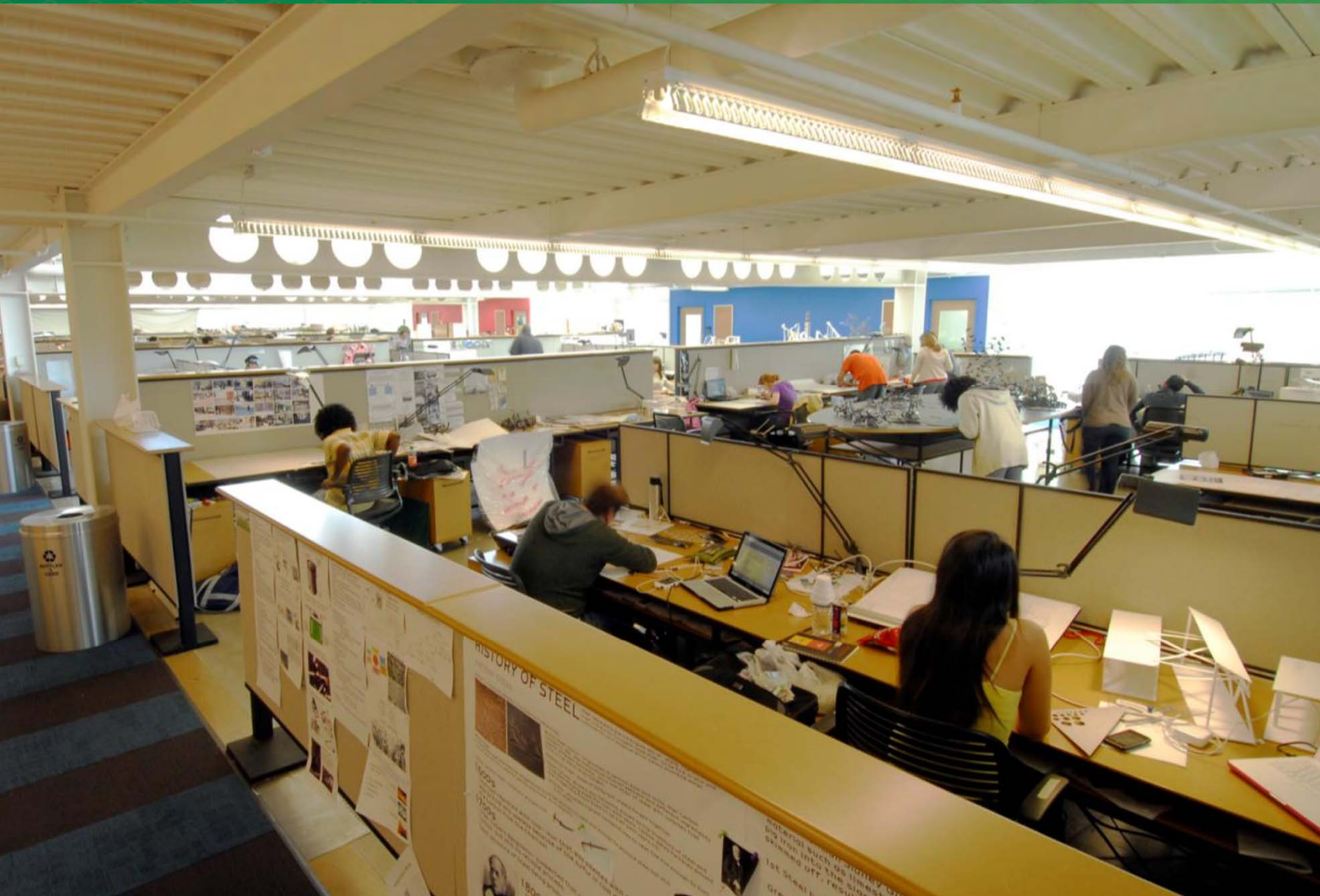
**SOUTHERN POLYTECHNIC
STATE UNIVERSITY**



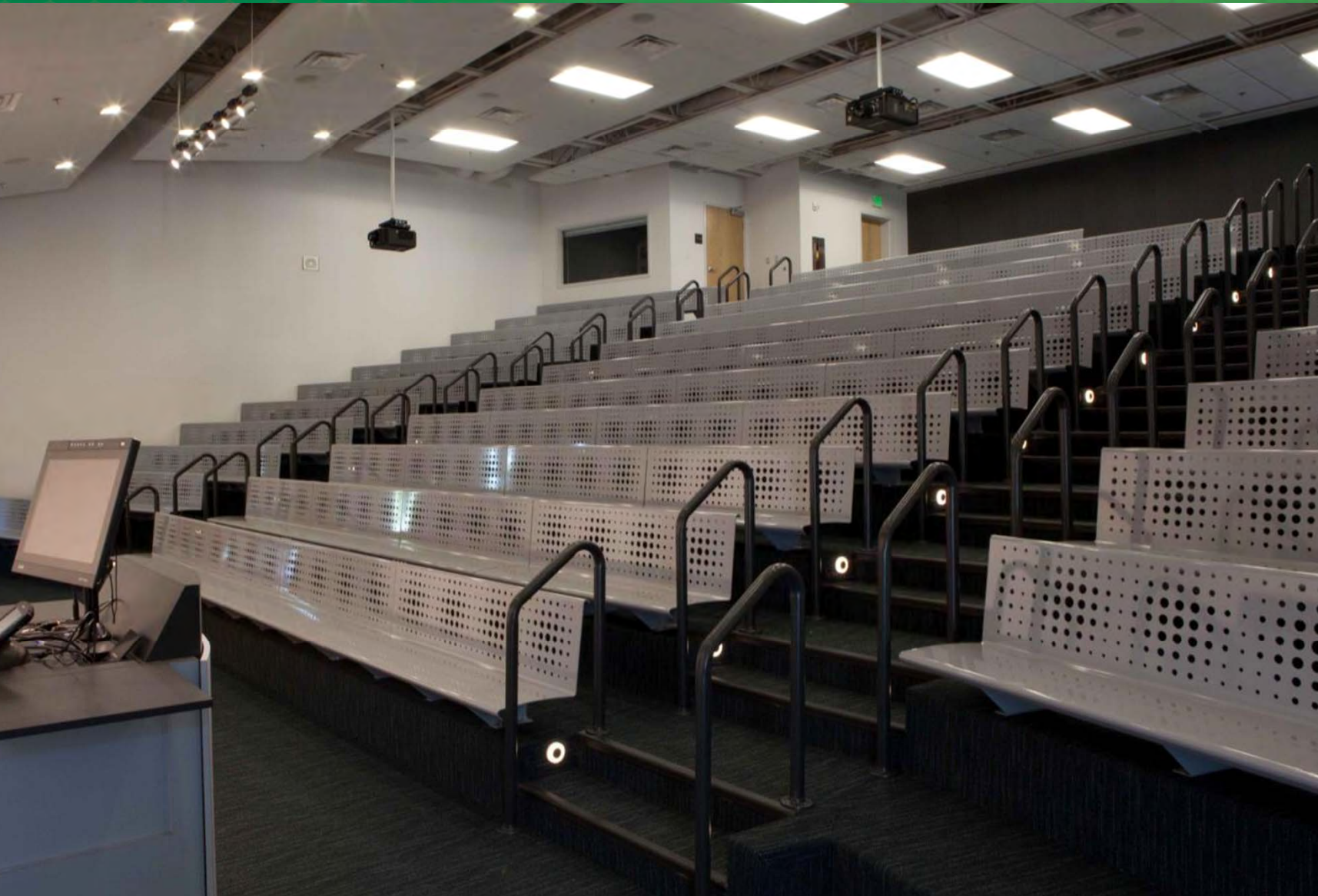
**SOUTHERN POLYTECHNIC
STATE UNIVERSITY**



SOUTHERN POLYTECHNIC STATE UNIVERSITY



**SOUTHERN POLYTECHNIC
STATE UNIVERSITY**



**SOUTHERN POLYTECHNIC
STATE UNIVERSITY**

PSU, Architecture Studio Addition Design II

AIA South Atlantic Region Brick Award, Honor Award, 2012

Gold Award, Brick in Architecture Awards, 2012

American Institute of Steel Construction IDEAS2 Award, National Certificate of Recognition, 2012

AIA Georgia Merit Design Award, 2011

Brick Industry Southeast Region, President's Award, 2011

Gold Award, Brick in Architecture Awards, 2011

Craftsmanship Award of Excellence, Masonry Association of Georgia, 2010

