



BOARD OF REGENTS UNIVERSITY SYSTEM OF GEORGIA

Office of Strategic Research and Analysis

270 Washington Street, SW, Atlanta, Georgia 30334 • (404) 656-2213 • FAX (404) 657-4130

February 2002

Analysis of Fall Term Credit Hour Production

Fall 2001 Curriculum Inventory Report

CURRICULUM INVENTORY REPORTING SYSTEM

Fall 2001 CIR Report and Analysis of Credit Hour Productivity

Executive Summary

One-Year Change in Credit Hour Production

- In Fall 2001, the University System generated 2,457,608 semester credit hours.
- The Fall 2000 to Fall 2001 increase, 138,530 SCH or 6.0 percent, is the largest one-year increase since Fall 1990 to Fall 1991.
- Semester credit hour production increased at all instruction levels (defined as lower, upper, and graduate/professional) in the last year, with the largest one-year percentage increase (7.0 percent) occurring at the upper level, and the highest numerical increase (89,676 SCH) produced at the lower level.
- Group 1, which includes letters, psychology and social sciences, had the highest one-year rate of increase, 7.7 percent, among the five funding groups.

Trends From 1997 to 2001

- The Fall 2001 USG credit hour production stands at 96.3 percent of the Fall 1997 level, largely due to the 6 percent increase in the last year.
- In Fall 2001, the lower, upper and graduate/professional levels of instruction produced 96.9 percent, 95.3 percent, and 95.2 percent, respectively, of their pre-semester conversion credit hour totals.
- The proportions of total SCH generated by instruction level have remained stable for several fall terms.
- The proportions of total SCH generated by funding groups have changed since Fall 1997. Despite the one-year surge in credit hour production by Group 1 (letters, social sciences, psychology) noted above, its share of total SCH among funding groups decreased from Fall 1997 to Fall 2001 by 2.4 percent. For the same period, the Group 2 (business, communications, education, etc.) proportion increased by 3.2 percent, and Group 3 (computer science, health professions, biological sciences) increased its share by 1.2 percent.

- Over the last four years, learning support credit hours (Group 4) have declined by one-third, as intended by the 2001 admissions policy, although there was virtually no change (-0.41 percent) in the last year.
- From Fall 1997 to Fall 2001, Group 5 credit hours decreased by 4.5 percent.
- In Fall 2001, the research university, state college and two-year college sectors all produced 100 percent or more of their respective Fall1997 credit hour totals, while regional and state universities remained 10 percent below the corresponding levels.

Curriculum Inventory Report

Fall 2001

Comparative Analysis of Credit Hour Productivity

One-Year Change in Credit Hour Production

The following graphs show the change in credit hour production from Fall 2000 to Fall 2001 by USG total, as well as by level of instruction, institutional sector, and funding group.

The University System's Fall 2001 total of 2,457,608 semester credit hours represents an increase of 138,530 or 6 percent over the previous Fall term. That growth in credit hour productivity is substantially larger, both numerically and as a percentage, than the previous fall to fall increase (i.e., almost four times the number of additional credit hours and over four times the rate of increase as from Fall 1999 to Fall 2000) and represents two-thirds of the total growth in credit hours from Fall 1998 to Fall 2001.

Figure 1
Total Semester Credit Hours
Fall 2000 – Fall 2001

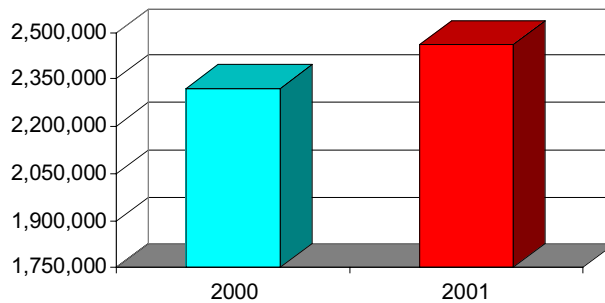


Figure 2 shows that the strongest percentage growth was at the upper level (7.0 percent). Lower level courses generated the second-highest percentage increase at 6.0 percent and the largest numerical increase (about two and a half times the upper level increase, 89,676 vs. 37,618 SCH). Graduate/professional course work also experienced strong growth from the previous fall term, generating 3.9 percent more credit hours.

Figure 2
Credit Hours By Level
Fall 2000 – Fall 2001

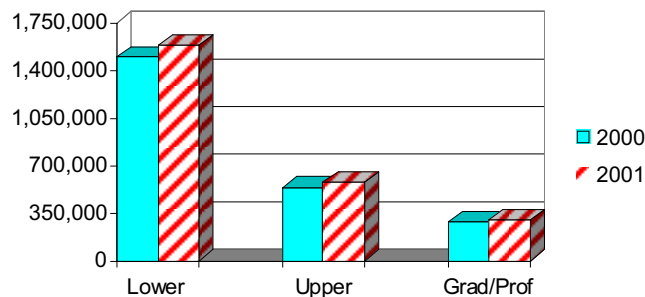


Figure 3 shows that all five institutional sectors increased credit hour production from Fall 2000 to Fall 2001. The range among the sectors was from 2.6 percent for regional universities to 14.2 percent for state colleges. The University System's research universities, which generate the largest proportion of credit hours, increased their total credit hours by 5.9 percent in the last year.

Figure 3
Change in Credit Hours By Sector
Fall 2000 – Fall 2001

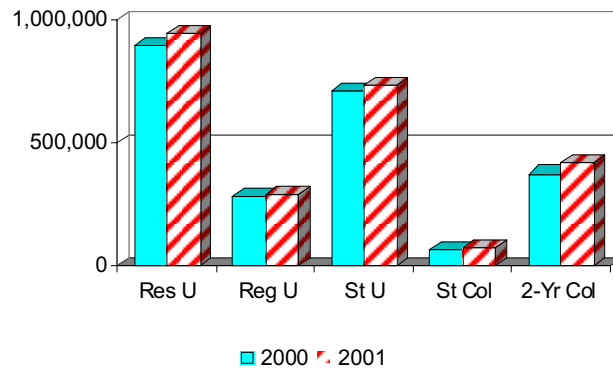
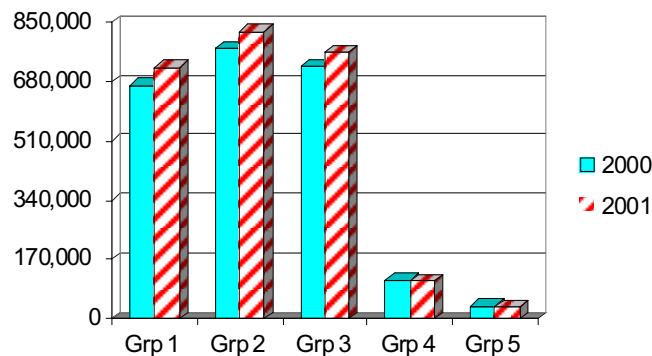


Figure 4 provides comparisons by funding groups. Three of the 5 funding groups generated more credit hours in Fall 2001 than in Fall 2000. Group 4, learning support, remained at virtually the same level as in Fall 2000, its output declining by just 464 credit hours or 0.41 percent. Group 5, consisting of medicine, dentistry, and veterinary medicine, also experienced essentially no change from Fall 2000 to Fall 2001 (-105 SCH/0.27 percent).

The other funding groups increased credit hour production, as follows: Group 1 (letters, psychology and social sciences: 7.7 percent); Group 2 (business, communications, education: 6.1 percent); and Group 3 (computer science, engineering and health professions: 5.6 percent).

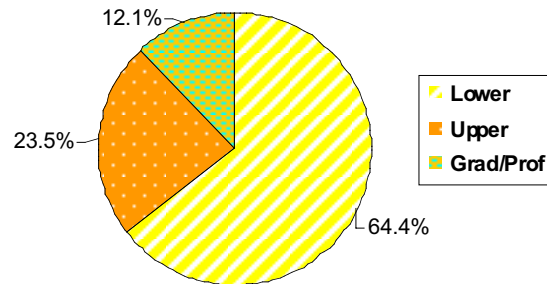
Figure 4
Change in Credit Hours By Funding Group
Fall 2000 – Fall 2001



Credit Hour Proportion by Level, Sector and Group

The proportions of total credit hours generated by level, illustrated in Figure 5 for Fall 2001, have remained relatively stable over the last five years.

Figure 5
Credit Hour Proportion By Level
Fall 2001



However, Figures 6 and 7 show that there have been shifts in credit hour production among both institutional sectors and funding groups between Fall 1997, the last fall term of the quarter system, and Fall 2001. The Fall 2001 proportion of total credit hours produced by research universities is greater by 2 percentage points than in Fall 1997, and the combined percentage produced by regional and state universities is smaller by 3 percent. State colleges and two-year colleges, together, increased their share of total credit hours by one percent.

Figure 6
Credit Hour Proportion By Sector
Fall 1997 and Fall 2001

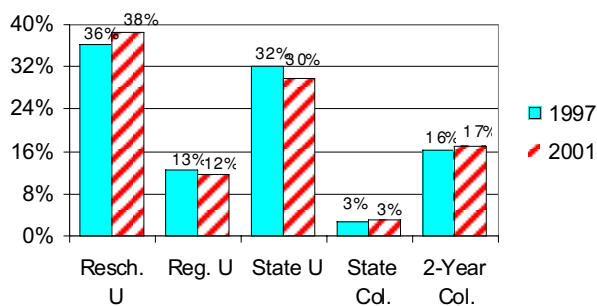
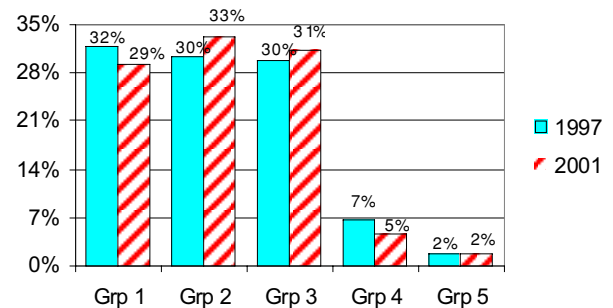


Figure 7
Credit Hour Proportion By Funding Group
Fall 1997 and Fall 2001

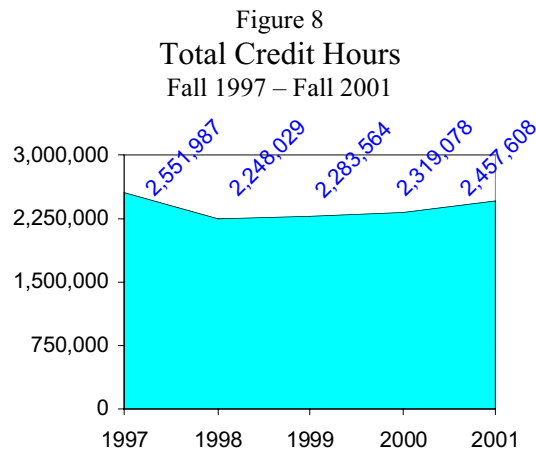


The Fall 2001 percentage of credit hours produced by Group 1 courses (letters, social sciences, etc.) has decreased by 3 percentage points, and learning support courses (Group 4) produced a 2 percent smaller share of total credit hours. Group 2 (business, communications, education, etc.) increased its proportion of total credit hours by 3 percent, and Group 3 (biological sciences, computer science, health professions) increased its share by 1 percentage point.

Five-Year Trends in Credit Hour Production

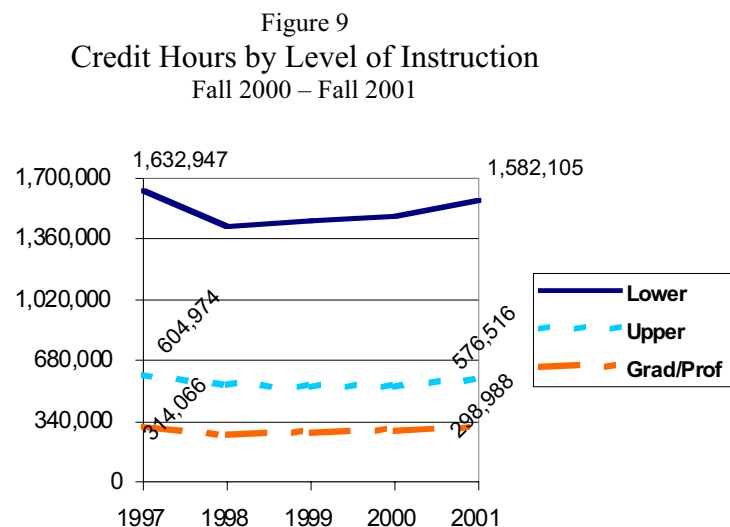
The growth in credit hour production in the last year represents a snapshot of USG progress following the lag that accompanied semester conversion and the cap on hours required for degrees. The next series of graphs analyzes the five-year trends in credit hour production from the last fall term of the quarter system to Fall 2001.

The first graph shows the overall 11.9 percent drop from Fall 1997 to Fall 1998, as well as the steady growth in SCH production from that point to the present. In the last three years, 209,579 SCH, or 69 percent of the original decrease, have been added back, raising the USG credit hour total to only 96.3 percent of its Fall 1997 level.



Instruction Level

The five-year trends in credit hour production by level of instruction can be seen in the following graph. Lower level SCH production, which decreased 12.4 percent in the first fall term of the semester system (Fall 1998), had increased by Fall 2001 to 97 percent of the Fall 1997. Both upper level and graduate/professional SCH production have also increased from Fall 1998 to Fall 2001, to more than 95 percent of the corresponding Fall 1997 levels.



Funding Group

The funding groups on the next two pages can be compared graphically in the same manner as instruction levels. A brief key to the academic fields in each group is provided with each graph.

As noted above, the Group 1 share of total credit hour production has declined in recent years while those of Groups 2 and 3 have increased. The following charts illustrate how those changes have occurred over time. For example, Group 1 has experienced a 5-year decline in credit hour production, but has been increasing its output since Fall 1999. Likewise, Group 2 credit hours started increasing sooner, Fall 1999, and have increased more rapidly than Group 3.

Figure 12
Group 1 Credit Hours
Fall 1997 – Fall 2001

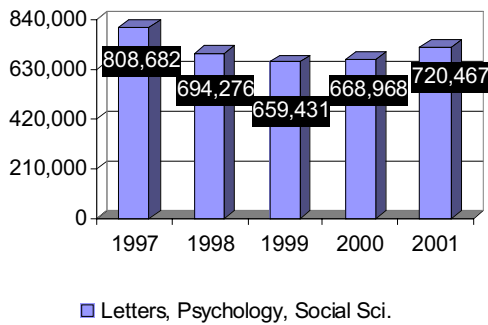


Figure 13
Group 2 Credit Hours
Fall 1997 – Fall 2001

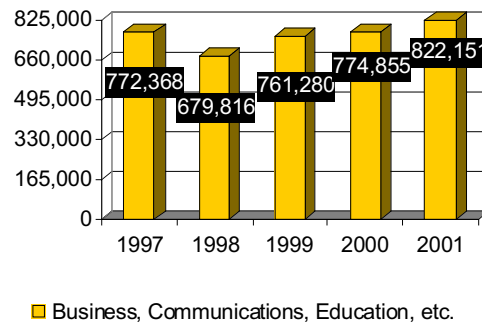
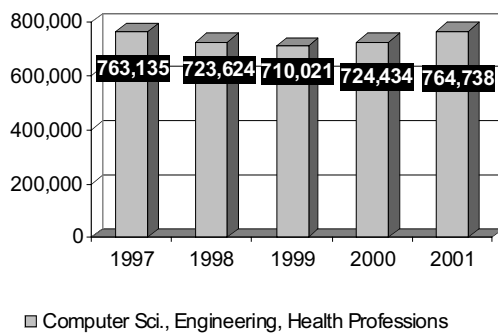


Figure 14
Group 3 Credit Hours
Fall 1997 – Fall 2001



Group 4 (Figure 15), which includes only learning support/developmental studies credit hours, decreased by 34 percent in Fall 1998. Group 4 has remained on a lower plateau as a result of deliberate USG policy changes, even as enrollment and overall credit hour production have increased.

Figure 15
Group 4 Credit Hours
Fall 1997 – Fall 2001

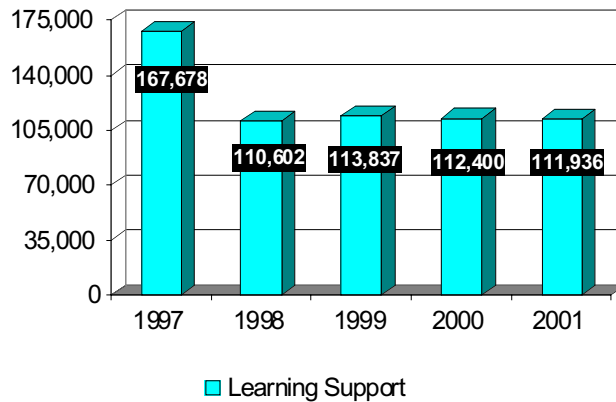
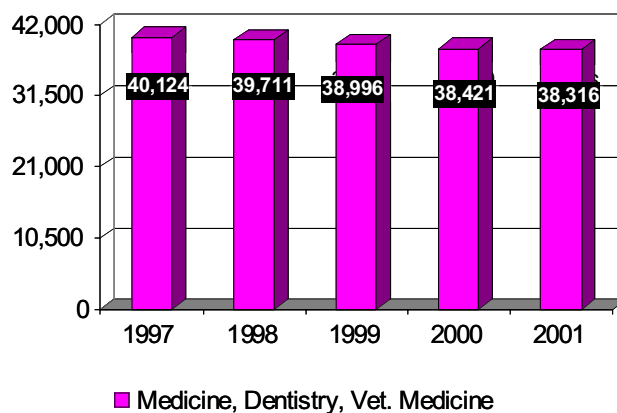


Figure 16 shows that Group 5 credit hour production has declined each fall term from Fall 1997 to Fall 2001, by a total of 1,808 SCH (4.5 percent). Group 5 consists of veterinary medicine credit hours (UGA), which have increased by 6.4 percent since Fall 1997, and medicine and dentistry credit hours (MCG), which have decreased by 6.6 percent over the same period. Medicine and dentistry produce the great majority of Group 5 credit hours.

Figure 16
Group 5 Credit Hours
Fall 1997 – Fall 2001



Institutional Sector

The comparative change in credit hour production by institutional sector is also relevant to understanding USG credit hour productivity since Fall 1997. Figures 17 and 18, below, illustrate those trends.

The research universities have increased total fall term SCH production by 2001 to a level that is 2 percent greater than the corresponding Fall 1997 level. Regional universities began to increase their credit hour production between Fall 2000 and Fall 2001, while state universities have increased their credit hours each fall term from Fall 1998 to Fall 2001. However, Fall 2001 credit hour production for both of those sectors was approximately 90 percent of the Fall 1997 level.

Figure 17
Research, Regional and State Universities
Fall 1997 – Fall 2001

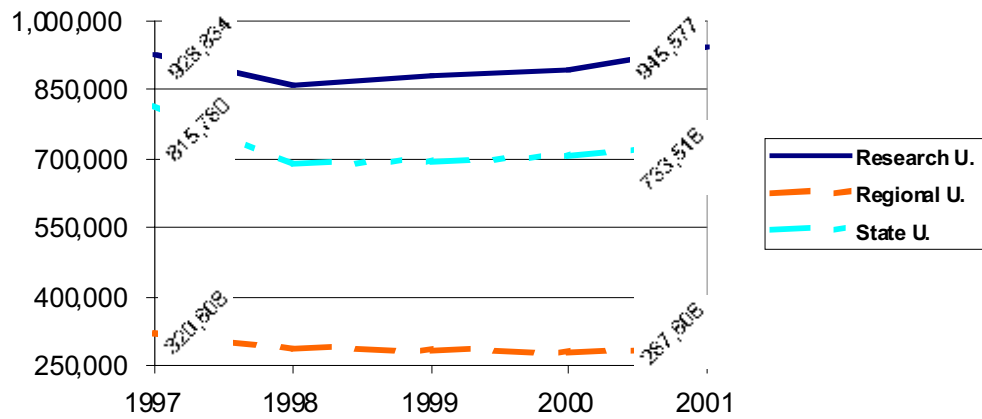


Figure 18 shows that both two-year colleges and state colleges have increased fall term credit hour production from Fall 1998 to Fall 2001, with state colleges increasing to 105 percent of their Fall 1997 level, and two-year colleges just exceeding their corresponding Fall 1997 credit hour total.

Figure 18
State Colleges and Two-Year Colleges
Fall 1997 – Fall 2001

