



## Educational Attainment of the Georgia Population

### Introduction

Reports produced by the federal government and higher education organizations discuss the personal and public benefits of high levels of educational attainment (i.e., a bachelor's degree or higher). For instance, individuals with higher levels of education benefit because they tend to earn more than those with less education.<sup>1</sup> In addition, the public benefits because college-

**24.3 percent** of Georgians 25 years or older have a bachelor's degree or higher, compared to 24.4 percent nationally, giving it a rank of 22<sup>nd</sup> among the 50 states.

educated citizens engage in activities associated with good health, such as exercising regularly, and community involvement, such as voting in elections, more than individuals with lower levels of education.<sup>2</sup> Thus, it is important that higher education administrators and policymakers monitor bachelor's degree completion and educational attainment at other levels that influence postsecondary enrollment. The purpose of this research note is to describe trends in

educational attainment among Georgians aged 25 and older, compare those with national averages, and examine factors that might influence those figures.

**78.6 percent** of Georgians 25 years or older, compared to 80.4 percent nationally, have at least a high school diploma. Georgia ranks 38<sup>th</sup> among the 50 states in terms of the percent of the population 25 years or older with at least a high school diploma.

The United States Census Bureau defines educational attainment as the highest level of education completed either in terms of the number of years of schooling or the highest degree attained. The Census Bureau collects data on educational attainment with the Decennial Census of Population and Housing, which is administered every ten years. In between censuses, the Bureau estimates educational attainment based on smaller samples using the Current Population Survey (CPS), which is administered each March. See Appendix A for more information on how

the Census Bureau collects educational attainment data. In the following analysis, data from the Decennial Census were used unless otherwise indicated.

<sup>1</sup> Source: Day, J.C. & Newburger, E.C. (2002). *The Big Payoff: Educational Attainment and Synthetic Estimates of Work-Life Earnings*. Washington, D.C.: U.S. Census Bureau.

<sup>2</sup> Source: American Council on Education (ACE) Fact Sheet on Higher Education (2001) that cites Tom Mortenson, Postsecondary Education Opportunity.

## Georgia and the U.S. in 2000

As Table 1 shows, the percentage of Georgia residents with less than a high school education (21.4 percent) was slightly higher than the U.S. average (19.6 percent) in 2000. However, the percentage of Georgia residents with a bachelor's degree or higher (24.3 percent) closely resembled the U.S. average (24.4 percent).

**Table 1**  
**Educational Attainment of Population 25 Years or Older**  
**Georgia versus U.S., 2000**

	Georgia		Nation	
	N	%	N	%
Less than 9 <sup>th</sup> Grade	393,197	7.6%	13,755,477	7.5%
9 <sup>th</sup> to 12 <sup>th</sup> Grade, No Diploma	718,152	13.8%	21,960,148	12.1%
High School Diploma Only	1,486,006	28.7%	52,168,981	28.6%
Some College, No Degree	1,058,692	20.4%	38,351,595	21.0%
Associate Degree	269,740	5.2%	11,512,833	6.3%
Bachelor's Degree	829,873	16.0%	28,317,792	15.5%
Graduate or Professional Degree	430,305	8.3%	16,144,813	8.9%
Total	5,185,965	100%	182,211,639	99.9%*
Less than High School Diploma	1,111,349	21.4%	35,715,625	19.6%
Bachelor's Degree and Above	1,260,178	24.3%	44,462,605	24.4%

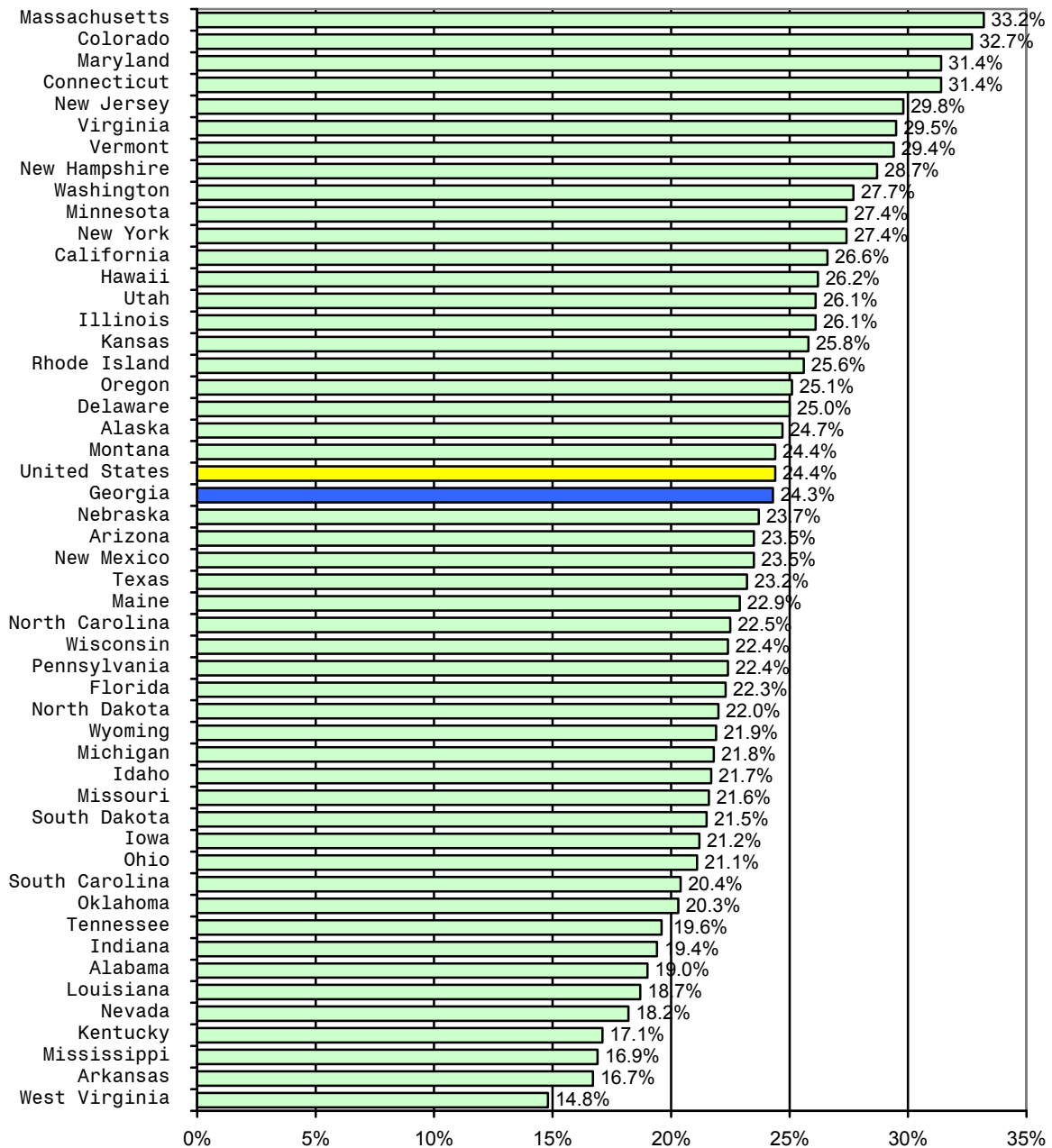
Source: U.S. Census Bureau, Census 2000

\*Does not equal 100 percent because of rounding.

Figure 1 shows that Georgia ranks 22<sup>nd</sup> among the 50 states in terms of the percentage of the population 25 years and older with at least a bachelor's degree.

**Figure 1**

**Percent of Population 25 Years and Older with a Bachelor's Degree or Higher:  
Rank of 50 States, 2000**



## Educational Attainment Among Georgia Counties

Appendix B shows the educational attainment of the population 25 years and over for the 159 Georgia counties in 2000. In 55 of the 159 counties, at least 33 percent of the population age 25 years and over do not have a high school diploma or the equivalent. In contrast, only eight counties have at least 33 percent of their population age 25 years and over with a bachelor's degree or higher.

Metropolitan counties fared better in terms of educational attainment. Only three of the 55 counties with less than 33 percent of the population age 25 and over without a high school diploma are metropolitan counties. Meanwhile, all eight of the counties with at least 33 percent of their population age 25 years and over having a bachelor's degree are metropolitan counties.

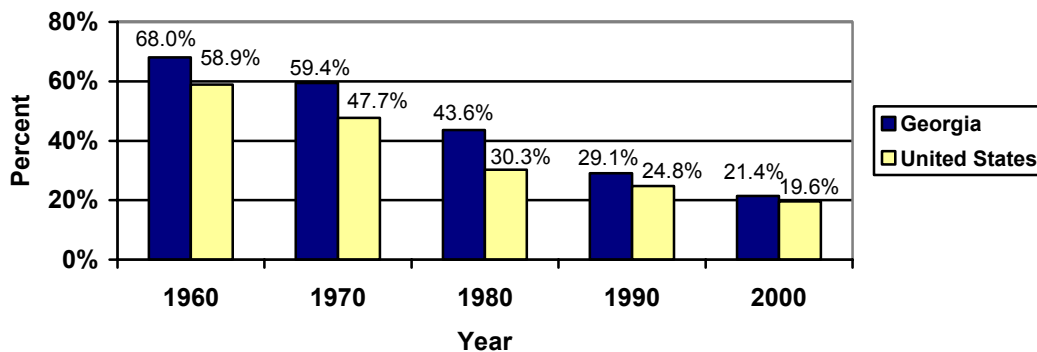
## Trends in Educational Attainment

Because of the benefits of higher levels of education, decreases in the percentage of the population with less than a high school diploma and increases in the population with a bachelor's degree or higher are preferred. Also, increases in the percentage of the population with a high school diploma or its equivalent are desired only if accompanied by a decrease in the percentage of the population with *less* than a high school diploma or an increase among those with a bachelor's degrees or higher.

Less than a high school diploma. Since 1960, Georgia, like the rest of the U.S., experienced a decrease in the percentage of the population 25 years and over with an educational attainment level of less than a high school education. As Figure 2 shows, the percentage dropped from 68.0 percent in 1960 to 21.4 percent in 2000 for Georgia. The national average decreased from 58.9 percent in 1960 to 19.6 percent in 2000. Thus, Georgia continues to have a higher percentage of the population 25 years and over with less than a high school diploma than the U.S. average. The gap between Georgia and the U.S. average, however, has narrowed since 1980.

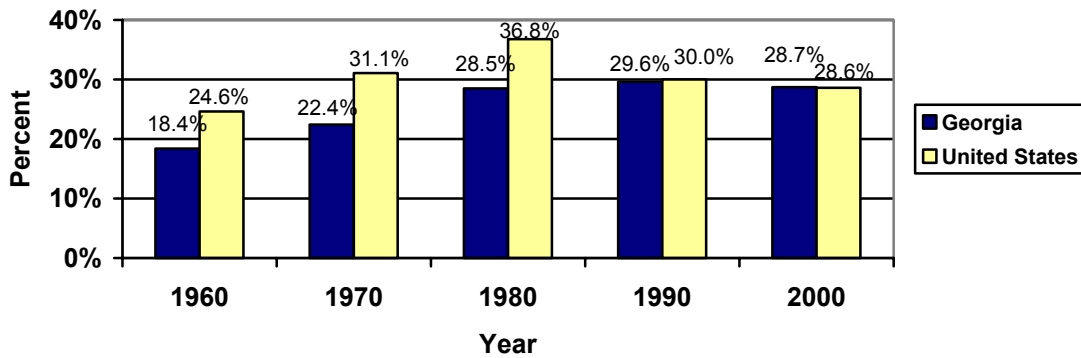
Figure 2

Percent of Population 25 Years and Over with Less than a High School Diploma



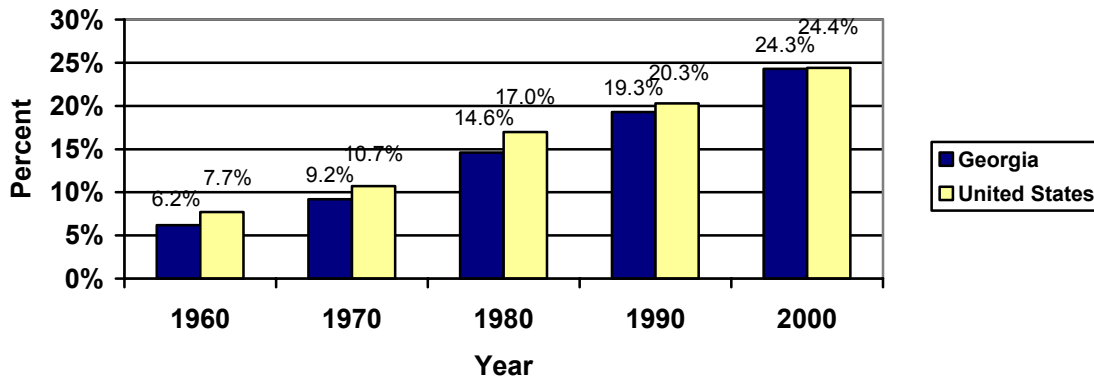
High school diploma or equivalent. As Figure 3 illustrates, the percentage of the population with a high school diploma or equivalent (but no postsecondary education) increased between 1960 and 1980 in both Georgia and the U.S. In 1990, however, Georgia demonstrated a slight increase, while the national average dropped, nearly eliminating the gap between the two. Both Georgia and the U.S. experienced a slight decrease in 2000.

**Figure 3**  
**Percent of Population 25 Years and Over with a High School Diploma or Equivalent**



Bachelor's degree or higher. The decrease in the percentage of the population with a high school diploma is less troubling when viewed in light of the increase in the percentage of the population with a bachelor's degree or higher as shown in Figure 4. The percentage of Georgia residents with a bachelor's degree or higher increased steadily between 1960 and 2000. The percentage of Georgians with four or more years of college grew from 6.2 percent in 1960 to 24.3 percent in 2000, while the U.S. average increased from 7.7 percent in 1960 to 24.4 percent in 2000.

**Figure 4**  
**Percent of Population 25 Years and Over with a Bachelor's Degree or Higher**



## What Influences Educational Attainment?

Completion of a bachelor's degree or higher requires that students proceed through a "pipeline" that includes high school graduation, postsecondary enrollment, and college retention. High school graduation includes either obtaining a high school diploma or passing the General Educational Development test. Postsecondary enrollment refers to registering for courses offered by a public or private, two-year or four-year college or university. College retention refers to the first-year retention rates of first-time freshmen.

High school graduation rate. The decline in the percentage of the population with a high school diploma becomes more of a concern when considering the Georgia high school graduation rate. Georgia currently performs poorly in this area in comparison with other states. In 2000, Georgia ranked 49<sup>th</sup> among the 50 states with a high school graduation rate of 52.3 percent.<sup>3</sup> The U.S. average was 67.1 percent.

Postsecondary enrollment. Georgia performs well relative to other states in terms of high school graduates going directly to college. In 2000, 60.4 percent of Georgia high school graduates enrolled in a college or university, ranking 16<sup>th</sup> among the 50 states. The U.S. average was 56.7 percent.<sup>4</sup>

First-year retention. In 2001, Georgia four-year colleges and universities performed below the U.S. average in terms of first-time freshmen returning their second year. Georgia institutions of higher education had a retention rate of 72.7 percent while the U.S. average was 74.1 percent.<sup>5</sup> As a result, Georgia ranked 37<sup>th</sup> among the 50 states.

Six-year graduation rates. It is important to consider six-year graduation rates for bachelor's degree-seeking students in addition to educational attainment rates because they show how quickly students move through the pipeline. Students who complete their bachelor's degrees within six years join the workforce sooner, making room for other students to enter postsecondary education.

Georgia's public and private colleges perform below the national average with respect to six-year graduation rates for first-time, full-time bachelor's degree-seeking students. In 2000, the six-year graduation rate for first-time, full-time bachelor's degree students in Georgia was 41.1 percent, a rank of 41<sup>st</sup> among the 50 states. The national average was 53.0 percent.

Characteristics of the population. Two characteristics of Georgia's population should be considered when examining educational attainment figures. First, Georgia's relatively large minority population might influence its educational attainment statistics because some minority groups pursue postsecondary education at lower rates than whites. With a minority population of

---

<sup>3</sup> Source: Public High School Graduation Rates at [www.HigherEdInfo.org](http://www.HigherEdInfo.org) that cites Tom Mortenson, Postsecondary Opportunity.

<sup>4</sup> Source: College-Going Rates of High School Graduates – Directly from High School at [www.HigherEdInfo.org](http://www.HigherEdInfo.org) that cites Tom Mortenson, Postsecondary Opportunity.

<sup>5</sup> Source: First-Time College Freshmen Returning Their Second Year at [www.HigherEdInfo.org](http://www.HigherEdInfo.org) which is based on data from an unpublished analysis of the ACT Institutional Data Questionnaire. Please note that this retention rate is the average for all Georgia four-year institutions, not just University System of Georgia institutions.

35.3 percent (not including Asians, who typically are not underrepresented in higher education), Georgia ranks seventh among the 50 states.<sup>6</sup>

Second, Georgia's population growth during the 1990s was greatly affected by in-migration. Between 1990 and 2000, net migration accounted for 65.9 percent of Georgia's population growth.<sup>7</sup> In fact, Georgia ranked second among the fifty states with regard to net domestic migration (and 13<sup>th</sup> in terms of net international migration) between 1990 and 1999.<sup>8</sup> It is likely that this in-migration contributes to the percentage of Georgia's population 25 and over with bachelor's degrees or higher; however, it is difficult to determine how much of an influence in-migration affects educational attainment levels.

## **Conclusion**

Researchers with government agencies and higher education organizations have written about the personal and public benefits of having a bachelor's degree or higher. On a positive note, the percentage of Georgia's population 25 years and over with a bachelor's degree or higher grew steadily from 6.2 percent in 1960 to 24.3 percent in 2000. Georgia, however, still has room for improvement. Among the 50 states, Georgia ranked 49<sup>th</sup> in terms of public high school graduation rate, 37<sup>th</sup> with respect to first-year retention rates of first-time freshmen, and 41<sup>st</sup> in six-year graduation rates of bachelor's degree students.

*For more information, write or e-mail:*

**Dr. Susan Campbell  
Policy Research Associate  
Board of Regents of the University System of Georgia  
270 Washington St., SW  
Atlanta, GA 30334**

**Susan.Campbell@usg.edu**

---

<sup>6</sup> Source: U.S. Census Bureau 2000 Decennial Census.

<sup>7</sup> Source: Boatright, S. R. & Bachetel, D. C. (2002). The 2002 Georgia County Guide (21<sup>st</sup> Ed.). University of Georgia: Athens, GA.

<sup>8</sup> Source: U.S. Census Bureau, State Rankings of Population Change and Demographic Components of Population Change for the Period April 1, 1990 to July 1, 1999.

## Appendix A

The way in which the census measures educational attainment has changed over time.<sup>9</sup> The following changes pertain to data used in this analysis.

The 1960 through 1980 decennial censuses collected data on educational attainment using a two-part question that asked the highest grade of school attended and whether that grade was completed.

With the 1990 census question on educational attainment, response categories for people who have attended college were changed because of difficulty in interpreting responses in previous censuses. For example, it was not clear whether “completed fourth year of college” was the same as “college graduate.” Comparisons of *postsecondary* educational attainment between the 1990 and previous censuses, therefore, should be made with caution.

With the 2000 census, the Census Bureau made changes to the educational attainment questions that are relevant to the topic of this paper:<sup>10</sup>

- Changing the educational attainment question to more directly ask about the highest year of school or degree completed;
- Dividing the category “Some college, but no degree” into two categories, “Some college credit, but less than 1 year” and “1 or more years of college, no degree”; and
- Collapsing the occupational and academic associate degree categories into a single associate degree category.

The Census Bureau also changed the way in which it collected educational attainment data using the CPS. Beginning with the 1992 survey, the CPS included a single question on educational attainment that is similar to the one in the 1990 Decennial Census.<sup>11</sup> Also in 1992:

- The “High School, 4 years” category was changed to “High School Graduate”;
- “College 1 to 3 years” was changed to “Some College”;
- Separate categories for occupational and academic associate degrees were added; and
- The category, “College 4 years or more” was divided into “Bachelor’s degree,” “Master’s degree,” “Doctorate degree,” and “Professional degree.”<sup>12</sup>

---

<sup>9</sup> See “Definitions of Subject Characteristics” at [www.census.gov/prod/cen1990/cp3/cp-3-4.pdf](http://www.census.gov/prod/cen1990/cp3/cp-3-4.pdf).

<sup>10</sup> See “Differences between the 1990 and 2000 Census Questionnaires at [www.census.gov/population/www/cen2000/90v00.html](http://www.census.gov/population/www/cen2000/90v00.html).

<sup>11</sup> See Current Population Survey (CPS) – Definitions and Explanations at [www.census.gov/population/www/cps/cpsdef.html](http://www.census.gov/population/www/cps/cpsdef.html).

<sup>12</sup> See footnotes to Table A-1. Years of School Completed by People 25 Years Old and Over, by Age and Sex: Selected Years 1940 to 2000 at [www.census.gov/population/socdemo/education/tableA-1.txt](http://www.census.gov/population/socdemo/education/tableA-1.txt).

**Appendix B**  
**Educational Attainment of Population 25 Years and Over by County: Georgia, 2000**

County	Pop. Age 25+ 2000	Less than 9th Grade Completed #, 2000	Less than 9th Grade Completed %, 2000	9th-12th Grade Completed No Diploma #, 2000	9th-12th Grade Completed No Diploma %, 2000	High School Graduate #, 2000	High School Graduate %, 2000	Some College No Degree #, 2000	Some College No Degree %, 2000	Associate Degree #, 2000	Associate Degree %, 2000	Bachelor Degree #, 2000	Bachelor Degree %, 2000	Graduate/ Prof. Degree #, 2000	Graduate/ Prof. Degree %, 2000	Not Completed High School %, 2000	% w/ Bachelor Degree+ 2000
Appling	11,004	1,280	11.63	2,317	21.06	4,095	37.21	1,948	17.7	436	3.96	582	5.29	346	3.14	32.69	8.43
Atkinson	4,503	994	22.07	972	21.59	1,620	35.98	464	10.3	142	3.15	207	4.6	104	2.31	43.66	6.91
Bacon	6,525	783	12	1,325	20.31	2,871	44	851	13.04	263	4.03	244	3.74	188	2.88	32.31	6.62
Baker	2,543	398	15.65	466	18.32	1,027	40.39	278	10.93	102	4.01	190	7.47	82	3.22	33.98	10.7
Baldwin	28,445	2,426	8.53	5,369	18.88	10,076	35.42	4,733	16.64	1,245	4.38	2,740	9.63	1,856	6.52	27.4	16.16
Banks	9,401	1,244	13.23	2,011	21.39	3,603	38.33	1,433	15.24	300	3.19	463	4.93	347	3.69	34.62	8.62
Barrow*	29,317	2,755	9.4	5,069	17.29	10,551	35.99	6,137	20.93	1,609	5.49	2,283	7.79	913	3.11	26.69	10.9
Bartow*	48,709	4,642	9.53	9,080	18.64	16,676	34.24	9,507	19.52	1,923	3.95	4,751	9.75	2,130	4.37	28.17	14.13
Ben Hill	10,990	1,420	12.92	2,338	21.27	4,090	37.22	1,702	15.49	394	3.59	643	5.85	403	3.67	34.19	9.52
Berrien	10,451	1,231	11.78	2,319	22.19	3,615	34.59	1,822	17.43	478	4.57	559	5.35	427	4.09	33.97	9.43
Bibb*	97,463	6,792	6.97	15,420	15.82	30,893	31.7	19,208	19.71	4,351	4.46	13,393	13.74	7,406	7.6	22.79	21.34
Bleckley	7,268	937	12.89	1,117	15.37	2,599	35.76	1,190	16.37	516	7.1	550	7.57	359	4.94	28.26	12.51
Brantley	9,282	892	9.61	1,661	17.89	4,402	47.43	1,440	15.51	307	3.31	308	3.32	272	2.93	27.5	6.25
Brooks	10,455	1,254	11.99	2,149	20.55	3,875	37.06	1,577	15.08	418	4	728	6.96	454	4.34	32.55	11.31
Bryan*	14,333	837	5.84	2,176	15.18	4,704	32.82	2,775	19.36	1,070	7.47	1,891	13.19	880	6.14	21.02	19.33
Bulloch	28,740	2,152	7.49	4,188	14.57	8,531	29.68	5,511	19.18	1,055	3.67	3,888	13.53	3,415	11.88	22.06	25.41
Burke	13,338	1,773	13.29	2,915	21.85	4,935	37	1,938	14.53	506	3.79	870	6.52	401	3.01	35.15	9.53
Butts	13,055	1,317	10.09	2,629	20.14	5,208	39.89	2,208	16.91	571	4.37	699	5.35	423	3.24	30.23	8.59
Calhoun	4,277	572	13.37	903	21.11	1,444	33.76	703	16.44	156	3.65	214	5	285	6.66	34.49	11.67
Camden	24,073	1,050	4.36	2,979	12.37	7,990	33.19	6,424	26.69	1,784	7.41	2,476	10.29	1,370	5.69	16.74	15.98
Candler	6,166	1,105	17.92	1,550	25.14	1,804	29.26	859	13.93	222	3.6	424	6.88	202	3.28	43.06	10.15
Carroll*	53,464	5,387	10.08	10,087	18.87	18,292	34.21	8,973	16.78	1,897	3.55	5,234	9.79	3,594	6.72	28.94	16.51
Catoosa*	35,231	2,667	7.57	5,778	16.4	12,267	34.82	7,729	21.94	1,933	5.49	3,371	9.57	1,486	4.22	23.97	13.79
Charlton	6,404	696	10.87	1,540	24.05	2,695	42.08	905	14.13	161	2.51	215	3.36	192	3	34.92	6.36
Chatham*	147,849	8,327	5.63	20,952	14.17	39,766	26.9	34,406	23.27	7,414	5.01	24,586	16.63	12,398	8.39	19.8	25.01
Chattahoochee*	6,417	156	2.43	564	8.79	1,484	23.13	2,066	32.2	542	8.45	1,184	18.45	421	6.56	11.22	25.01
Chattooga	17,054	2,838	16.64	3,915	22.96	5,909	34.65	2,509	14.71	573	3.36	807	4.73	503	2.95	39.6	7.68
Cherokee*	91,141	5,279	5.79	8,906	9.77	24,882	27.3	21,628	23.73	5,856	6.43	17,895	19.63	6,695	7.35	15.56	26.98
Clarke*	51,845	3,703	7.14	6,125	11.81	11,205	21.61	8,174	15.77	1,992	3.84	10,860	20.95	9,786	18.88	18.96	39.82

County	Pop. Age 25+ 2000	Less than 9th Grade Completed #, 2000	Less than 9th Grade Completed %, 2000	9th-12th Grade Completed No Diploma #, 2000	9th-12th Grade Completed No Diploma %, 2000	High School Graduate #, 2000	High School Graduate %, 2000	Some College No Degree #, 2000	Some College No Degree %, 2000	Associate Degree #, 2000	Associate Degree %, 2000	Bachelor Degree #, 2000	Bachelor Degree %, 2000	Graduate/ Prof. Degree #, 2000	Graduate/ Prof. Degree %, 2000	Not Completed High School %, 2000	% w/ Bachelor Degree+ 2000
Clay	2,215	301	13.59	489	22.08	787	35.53	332	14.99	83	3.75	100	4.51	123	5.55	35.67	10.07
Clayton*	141,554	9,122	6.44	19,099	13.49	45,143	31.89	36,151	25.54	8,495	6	17,280	12.21	6,264	4.43	19.94	16.63
Clinch	4,380	845	19.29	957	21.85	1,421	32.44	589	13.45	111	2.53	265	6.05	192	4.38	41.14	10.43
Cobb*	395,349	15,282	3.87	29,032	7.34	82,038	20.75	88,678	22.43	23,141	5.85	110,788	28.02	46,390	11.73	11.21	39.76
Coffee	22,798	2,792	12.25	5,227	22.93	7,513	32.95	3,894	17.08	1,085	4.76	1,495	6.56	792	3.47	35.17	10.03
Colquitt	26,127	3,857	14.76	5,313	20.34	9,344	35.76	3,828	14.65	806	3.08	1,959	7.5	1,020	3.9	35.1	11.4
Columbia*	56,562	2,203	3.89	4,657	8.23	14,576	25.77	12,389	21.9	4,665	8.25	11,292	19.96	6,780	11.99	12.13	31.95
Cook	9,876	1,270	12.86	2,231	22.59	3,554	35.99	1,536	15.55	483	4.89	540	5.47	262	2.65	35.45	8.12
Coweta*	56,821	3,519	6.19	6,923	12.18	18,664	32.85	12,964	22.82	3,042	5.35	8,123	14.3	3,586	6.31	18.38	20.61
Crawford	8,050	587	7.29	2,049	25.45	3,189	39.61	1,409	17.5	267	3.32	398	4.94	151	1.88	32.75	6.82
Crisp	13,709	1,581	11.53	3,100	22.61	4,727	34.48	2,038	14.87	511	3.73	1,188	8.67	564	4.11	34.15	12.78
Dade*	9,728	1,225	12.59	1,982	20.37	2,955	30.38	1,953	20.08	554	5.69	733	7.53	326	3.35	32.97	10.89
Dawson	10,752	649	6.04	1,558	14.49	3,565	33.16	2,452	22.81	585	5.44	1,285	11.95	658	6.12	20.53	18.07
Decatur	17,633	1,971	11.18	3,375	19.14	5,914	33.54	3,465	19.65	772	4.38	1,295	7.34	841	4.77	30.32	12.11
Dekalb*	429,981	24,282	5.65	39,978	9.3	87,359	20.32	96,268	22.39	26,005	6.05	97,769	22.74	58,320	13.56	14.94	36.3
Dodge	12,501	1,580	12.64	2,634	21.07	4,577	36.61	1,749	13.99	512	4.1	852	6.82	597	4.78	33.71	11.59
Dooly	7,309	838	11.47	1,467	20.07	2,765	37.83	1,213	16.6	322	4.41	415	5.68	289	3.95	31.54	9.63
Dougherty*	58,024	5,016	8.64	10,270	17.7	16,397	28.26	13,354	23.01	2,640	4.55	6,618	11.41	3,729	6.43	26.34	17.83
Douglas*	58,687	3,242	5.52	7,824	13.33	20,316	34.62	12,939	22.05	3,081	5.25	7,891	13.45	3,394	5.78	18.86	19.23
Early	7,872	1,081	13.73	1,404	17.84	2,635	33.47	1,388	17.63	375	4.76	591	7.51	398	5.06	31.57	12.56
Echols	2,167	387	17.86	470	21.69	772	35.63	323	14.91	34	1.57	142	6.55	39	1.8	39.55	8.35
Effingham*	23,129	1,348	5.83	3,543	15.32	9,351	40.43	4,549	19.67	1,181	5.11	2,143	9.27	1,014	4.38	21.15	13.65
Elbert	13,617	1,504	11.05	2,959	21.73	5,342	39.23	1,943	14.27	528	3.88	858	6.3	483	3.55	32.78	9.85
Emanuel	13,465	2,022	15.02	3,169	23.54	4,735	35.17	1,775	13.18	410	3.04	703	5.22	651	4.83	38.55	10.06
Evans	6,540	936	14.31	1,305	19.95	2,564	39.2	952	14.56	195	2.98	359	5.49	229	3.5	34.27	8.99
Fannin	14,291	1,817	12.71	2,335	16.34	5,564	38.93	2,525	17.67	559	3.91	873	6.11	618	4.32	29.05	10.43
Fayette*	59,016	1,313	2.22	3,189	5.4	14,174	24.02	14,725	24.95	4,268	7.23	14,111	23.91	7,236	12.26	7.63	36.17
Floyd	58,651	6,739	11.49	9,997	17.04	19,489	33.23	10,818	18.44	2,341	3.99	5,849	9.97	3,418	5.83	28.53	15.8
Forsyth*	65,027	3,617	5.56	5,669	8.72	15,272	23.49	14,062	21.62	3,917	6.02	16,950	26.07	5,540	8.52	14.28	34.59
Franklin	13,448	1,487	11.06	2,947	21.91	5,039	37.47	1,975	14.69	610	4.54	864	6.42	526	3.91	32.97	10.34
Fulton*	527,738	27,106	5.14	57,264	10.85	102,246	19.37	97,894	18.55	24,823	4.7	140,666	26.65	77,739	14.73	15.99	41.39

County	Pop. Age 25+ 2000	Less than 9th Grade Completed #, 2000	Less than 9th Grade Completed %, 2000	9th-12th Grade Completed No Diploma #, 2000	9th-12th Grade Completed No Diploma %, 2000	High School Graduate #, 2000	High School Graduate %, 2000	Some College No Degree #, 2000	Some College No Degree %, 2000	Associate Degree #, 2000	Associate Degree %, 2000	Bachelor Degree #, 2000	Bachelor Degree %, 2000	Graduate/ Prof. Degree #, 2000	Graduate/ Prof. Degree %, 2000	Not Completed High School %, 2000	% w/ Bachelor Degree+ 2000
Gilmer	15,718	2,228	14.17	3,120	19.85	5,232	33.29	2,561	16.29	549	3.49	1,246	7.93	782	4.98	34.02	12.9
Glascocock	1,764	280	15.87	318	18.03	711	40.31	291	16.5	50	2.83	65	3.68	49	2.78	33.9	6.46
Glynn	44,806	2,624	5.86	5,341	11.92	13,107	29.25	10,192	22.75	2,888	6.45	6,754	15.07	3,900	8.7	17.78	23.78
Gordon	28,490	3,838	13.47	5,875	20.62	9,723	34.13	4,894	17.18	1,140	4	1,899	6.67	1,121	3.93	34.09	10.6
Grady	14,988	1,700	11.34	2,886	19.26	5,956	39.74	2,349	15.67	507	3.38	1,018	6.79	572	3.82	30.6	10.61
Greene	9,508	983	10.34	1,863	19.59	3,165	33.29	1,479	15.56	342	3.6	1,043	10.97	633	6.66	29.93	17.63
Gwinnett*	372,628	16,996	4.56	30,376	8.15	81,979	22	89,224	23.94	27,146	7.29	89,735	24.08	37,172	9.98	12.71	34.06
Habersham	23,501	3,113	13.25	3,733	15.88	7,931	33.75	4,143	17.63	863	3.67	2,293	9.76	1,425	6.06	29.13	15.82
Hall	86,821	12,081	13.91	13,523	15.58	25,680	29.58	15,558	17.92	3,718	4.28	10,368	11.94	5,893	6.79	29.49	18.73
Hancock	6,618	960	14.51	1,539	23.25	2,281	34.47	1,037	15.67	155	2.34	411	6.21	235	3.55	37.76	9.76
Haralson	16,814	2,299	13.67	3,920	23.31	6,075	36.13	2,511	14.93	491	2.92	931	5.54	587	3.49	36.99	9.03
Harris*	16,231	1,190	7.33	2,226	13.71	4,774	29.41	3,658	22.54	951	5.86	2,247	13.84	1,185	7.3	21.05	21.14
Hart	15,838	1,499	9.46	3,081	19.45	5,841	36.88	2,511	15.85	760	4.8	1,269	8.01	877	5.54	28.92	13.55
Heard	7,020	880	12.54	1,508	21.48	2,929	41.72	1,022	14.56	168	2.39	365	5.2	148	2.11	34.02	7.31
Henry*	75,501	3,069	4.06	8,838	11.71	25,901	34.31	17,907	23.72	5,026	6.66	10,215	13.53	4,545	6.02	15.77	19.55
Houston*	69,038	3,352	4.86	7,490	10.85	22,344	32.36	17,485	25.33	4,730	6.85	8,200	11.88	5,437	7.88	15.7	19.75
Irwin	6,196	783	12.64	1,218	19.66	2,384	38.48	890	14.36	310	5	423	6.83	188	3.03	32.3	9.86
Jackson	26,849	3,075	11.45	5,495	20.47	9,541	35.54	4,550	16.95	1,035	3.85	2,017	7.51	1,136	4.23	31.92	11.74
Jasper	7,531	686	9.11	1,593	21.15	2,799	37.17	1,382	18.35	202	2.68	547	7.26	322	4.28	30.26	11.54
Jeff Davis	8,036	1,055	13.13	1,895	23.58	2,847	35.43	1,163	14.47	323	4.02	485	6.04	268	3.33	36.71	9.37
Jefferson	10,799	1,805	16.71	2,672	24.74	3,668	33.97	1,280	11.85	389	3.6	675	6.25	310	2.87	41.46	9.12
Jenkins	5,335	916	17.17	1,110	20.81	1,753	32.86	800	15	179	3.36	356	6.67	221	4.14	37.98	10.82
Johnson	5,206	824	15.83	1,133	21.76	2,052	39.42	619	11.89	174	3.34	249	4.78	155	2.98	37.59	7.76
Jones*	15,383	1,241	8.07	2,164	14.07	6,314	41.05	2,693	17.51	661	4.3	1,453	9.45	857	5.57	22.13	15.02
Lamar	10,227	952	9.31	1,979	19.35	3,789	37.05	1,912	18.7	444	4.34	690	6.75	461	4.51	28.66	11.25
Lanier	4,487	479	10.68	1,000	22.29	1,535	34.21	867	19.32	212	4.72	248	5.53	146	3.25	32.96	8.78
Laurens	28,875	3,052	10.57	5,512	19.09	10,718	37.12	4,301	14.9	1,120	3.88	2,573	8.91	1,599	5.54	29.66	14.45
Lee*	15,036	618	4.11	2,192	14.58	5,393	35.87	3,360	22.35	923	6.14	1,700	11.31	850	5.65	18.69	16.96
Liberty	30,797	1,039	3.37	3,035	9.85	10,545	34.24	9,449	30.68	2,260	7.34	2,958	9.6	1,511	4.91	13.23	14.51
Lincoln	5,701	550	9.65	1,102	19.33	2,071	36.33	1,191	20.89	213	3.74	356	6.24	218	3.82	28.98	10.07
Long	5,527	551	9.97	870	15.74	2,300	41.61	1,247	22.56	236	4.27	199	3.6	124	2.24	25.71	5.84

County	Pop. Age 25+ 2000	Less than 9th Grade Completed #, 2000	Less than 9th Grade Completed %, 2000	9th-12th Grade Completed No Diploma #, 2000	9th-12th Grade Completed No Diploma %, 2000	High School Graduate #, 2000	High School Graduate %, 2000	Some College No Degree #, 2000	Some College No Degree %, 2000	Associate Degree #, 2000	Associate Degree %, 2000	Bachelor Degree #, 2000	Bachelor Degree %, 2000	Graduate/ Prof. Degree #, 2000	Graduate/ Prof. Degree %, 2000	Not Completed High School %, 2000	% w/ Bachelor Degree+ 2000
Lowndes	54,237	3,564	6.57	8,555	15.77	16,587	30.58	11,642	21.47	3,224	5.94	6,768	12.48	3,897	7.19	22.34	19.66
Lumpkin	12,665	1,413	11.16	2,138	16.88	3,849	30.39	2,380	18.79	651	5.14	1,324	10.45	910	7.19	28.04	17.64
Mcduffie*	13,442	1,518	11.29	2,957	22	4,731	35.2	2,245	16.7	421	3.13	1,076	8	494	3.68	33.29	11.68
Mcintosh	6,978	698	10	1,312	18.8	2,641	37.85	1,315	18.84	234	3.35	443	6.35	335	4.8	28.8	11.15
Macon	8,844	1,435	16.23	1,818	20.56	3,112	35.19	1,388	15.69	207	2.34	623	7.04	261	2.95	36.78	10
Madison*	16,881	1,439	8.52	3,493	20.69	6,891	40.82	2,637	15.62	582	3.45	1,148	6.8	691	4.09	29.22	10.89
Marion	4,437	528	11.9	1,005	22.65	1,603	36.13	713	16.07	192	4.33	193	4.35	203	4.58	34.55	8.92
Meriwether	14,434	1,727	11.96	3,214	22.27	5,146	35.65	2,305	15.97	483	3.35	932	6.46	627	4.34	34.23	10.8
Miller	4,281	583	13.62	743	17.36	1,536	35.88	750	17.52	187	4.37	318	7.43	164	3.83	30.97	11.26
Mitchell	14,972	1,818	12.14	3,380	22.58	5,298	35.39	2,674	17.86	437	2.92	884	5.9	481	3.21	34.72	9.12
Monroe	14,185	1,120	7.9	2,041	14.39	5,493	38.72	2,381	16.79	722	5.09	1,507	10.62	921	6.49	22.28	17.12
Montgomery	5,108	473	9.26	986	19.3	2,013	39.41	733	14.35	215	4.21	455	8.91	233	4.56	28.56	13.47
Morgan	10,125	833	8.23	1,804	17.82	3,752	37.06	1,582	15.62	264	2.61	1,312	12.96	578	5.71	26.04	18.67
Murray	22,803	3,942	17.29	4,939	21.66	8,069	35.39	3,371	14.78	842	3.69	1,112	4.88	528	2.32	38.95	7.19
Muscogee*	114,045	7,985	7	16,059	14.08	32,127	28.17	27,416	24.04	7,278	6.38	14,086	12.35	9,094	7.97	21.08	20.33
Newton*	39,144	2,988	7.63	6,912	17.66	13,601	34.75	8,341	21.31	1,610	4.11	3,715	9.49	1,977	5.05	25.29	14.54
Oconee*	16,470	742	4.51	1,450	8.8	3,850	23.38	3,069	18.63	806	4.89	3,739	22.7	2,814	17.09	13.31	39.79
Oglethorpe	8,436	809	9.59	1,546	18.33	3,158	37.43	1,297	15.37	308	3.65	850	10.08	468	5.55	27.92	15.62
Paulding*	50,422	2,578	5.11	7,107	14.1	19,702	39.07	11,040	21.9	2,327	4.62	5,851	11.6	1,817	3.6	19.21	15.21
Peach*	14,055	1,295	9.21	2,446	17.4	4,667	33.21	2,711	19.29	580	4.13	1,371	9.75	985	7.01	26.62	16.76
Pickens*	15,868	1,855	11.69	2,873	18.11	5,259	33.14	2,902	18.29	500	3.15	1,574	9.92	905	5.7	29.8	15.62
Pierce	10,131	1,214	11.98	1,848	18.24	4,174	41.2	1,577	15.57	298	2.94	689	6.8	331	3.27	30.22	10.07
Pike	8,833	745	8.43	1,438	16.28	3,539	40.07	1,459	16.52	415	4.7	902	10.21	335	3.79	24.71	14
Polk	24,703	3,646	14.76	5,424	21.96	8,672	35.11	4,173	16.89	812	3.29	1,014	4.1	962	3.89	36.72	8
Pulaski	6,445	570	8.84	1,147	17.8	2,330	36.15	1,317	20.43	250	3.88	536	8.32	295	4.58	26.64	12.89
Putnam	12,931	1,027	7.94	2,147	16.6	5,241	40.53	2,084	16.12	570	4.41	1,107	8.56	755	5.84	24.55	14.4
Quitman	1,773	288	16.24	461	26	604	34.07	250	14.1	61	3.44	72	4.06	37	2.09	42.24	6.15
Rabun	10,675	908	8.51	1,721	16.12	3,737	35.01	1,997	18.71	430	4.03	1,078	10.1	804	7.53	24.63	17.63
Randolph	4,783	804	16.81	994	20.78	1,556	32.53	749	15.66	227	4.75	239	5	214	4.47	37.59	9.47
Richmond*	122,592	9,144	7.46	17,867	14.57	36,323	29.63	28,392	23.16	7,957	6.49	14,767	12.05	8,142	6.64	22.03	18.69
Rockdale*	44,794	2,755	6.15	5,125	11.44	13,152	29.36	10,735	23.97	2,566	5.73	7,102	15.85	3,359	7.5	17.59	23.35

County	Pop. Age 25+ 2000	Less than 9th Grade Completed #, 2000	Less than 9th Grade Completed %, 2000	9th-12th Grade Completed No Diploma #, 2000	9th-12th Grade Completed No Diploma %, 2000	High School Graduate #, 2000	High School Graduate %, 2000	Some College No Degree #, 2000	Some College No Degree %, 2000	Associate Degree #, 2000	Associate Degree %, 2000	Bachelor Degree #, 2000	Bachelor Degree %, 2000	Graduate/ Prof. Degree #, 2000	Graduate/ Prof. Degree %, 2000	Not Completed High School %, 2000	% w/ Bachelor Degree+ 2000
Schley	2,364	198	8.38	511	21.62	949	40.14	313	13.24	68	2.88	180	7.61	145	6.13	29.99	13.75
Screven	9,685	1,376	14.21	1,827	18.86	3,740	38.62	1,484	15.32	269	2.78	688	7.1	301	3.11	33.07	10.21
Seminole	6,114	819	13.4	1,145	18.73	2,250	36.8	1,064	17.4	311	5.09	361	5.9	164	2.68	32.12	8.59
Spalding*	37,110	4,041	10.89	7,924	21.35	12,885	34.72	6,145	16.56	1,487	4.01	3,106	8.37	1,522	4.1	32.24	12.47
Stephens	16,771	1,909	11.38	2,934	17.49	6,014	35.86	2,982	17.78	570	3.4	1,580	9.42	782	4.66	28.88	14.08
Stewart	3,495	605	17.31	682	19.51	1,295	37.05	516	14.76	72	2.06	180	5.15	145	4.15	36.82	9.3
Sumter	20,040	2,170	10.83	3,858	19.25	6,051	30.19	3,489	17.41	603	3.01	2,242	11.19	1,627	8.12	30.08	19.31
Talbot	4,403	571	12.97	981	22.28	1,773	40.27	588	13.35	143	3.25	202	4.59	145	3.29	35.25	7.88
Taliaferro	1,434	307	21.41	321	22.38	467	32.57	137	9.55	82	5.72	65	4.53	55	3.84	43.79	8.37
Tattnall	14,688	1,720	11.71	3,228	21.98	5,760	39.22	2,390	16.27	431	2.93	814	5.54	345	2.35	33.69	7.89
Taylor	5,594	840	15.02	1,198	21.42	2,179	38.95	742	13.26	159	2.84	329	5.88	147	2.63	36.43	8.51
Telfair	7,906	818	10.35	2,063	26.09	3,168	40.07	968	12.24	230	2.91	425	5.38	234	2.96	36.44	8.34
Terrell	6,741	795	11.79	1,599	23.72	2,212	32.81	1,171	17.37	244	3.62	411	6.1	309	4.58	35.51	10.68
Thomas	27,697	2,778	10.03	4,551	16.43	9,301	33.58	5,164	18.64	1,255	4.53	2,944	10.63	1,704	6.15	26.46	16.78
Tift	23,433	2,733	11.66	4,779	20.39	7,109	30.34	3,663	15.63	1,486	6.34	2,167	9.25	1,496	6.38	32.06	15.63
Toombs	16,212	1,842	11.36	3,455	21.31	5,669	34.97	2,519	15.54	672	4.15	1,367	8.43	688	4.24	32.67	12.68
Towns	6,935	709	10.22	1,021	14.72	2,316	33.4	1,289	18.59	390	5.62	655	9.44	555	8	24.95	17.45
Treutlen	4,292	640	14.91	998	23.25	1,702	39.66	455	10.6	134	3.12	222	5.17	141	3.29	38.16	8.46
Troup	36,815	3,303	8.97	6,644	18.05	12,395	33.67	6,340	17.22	1,519	4.13	4,423	12.01	2,191	5.95	27.02	17.97
Turner	5,707	602	10.55	1,244	21.8	2,207	38.67	851	14.91	205	3.59	330	5.78	268	4.7	32.35	10.48
Twiggs*	6,702	869	12.97	1,600	23.87	2,730	40.73	995	14.85	144	2.15	234	3.49	130	1.94	36.84	5.43
Union	12,730	1,154	9.07	2,131	16.74	4,471	35.12	2,656	20.86	721	5.66	960	7.54	637	5	25.81	12.55
Upson	18,325	2,269	12.38	3,839	20.95	6,817	37.2	2,574	14.05	727	3.97	1,458	7.96	641	3.5	33.33	11.45
Walker*	40,837	5,016	12.28	8,524	20.87	14,299	35.01	7,239	17.73	1,607	3.94	2,768	6.78	1,384	3.39	33.16	10.17
Walton	38,527	3,193	8.29	7,021	18.22	13,725	35.62	7,945	20.62	1,619	4.2	3,439	8.93	1,585	4.11	26.51	13.04
Ware	23,380	2,394	10.24	4,545	19.44	9,060	38.75	3,860	16.51	862	3.69	1,582	6.77	1,077	4.61	29.68	11.37
Warren	4,061	813	20.02	930	22.9	1,409	34.7	504	12.41	82	2.02	226	5.57	97	2.39	42.92	7.95
Washington	13,626	1,611	11.82	2,711	19.9	5,289	38.82	2,081	15.27	500	3.67	960	7.05	474	3.48	31.72	10.52
Wayne	17,531	1,940	11.07	3,295	18.8	6,500	37.08	3,092	17.64	673	3.84	1,338	7.63	693	3.95	29.86	11.59
Webster	1,588	259	16.31	356	22.42	539	33.94	241	15.18	49	3.09	110	6.93	34	2.14	38.73	9.07
Wheeler	4,144	638	15.4	694	16.75	1,733	41.82	641	15.47	142	3.43	181	4.37	115	2.78	32.14	7.14

County	Pop. Age 25+ 2000	Less than 9th Grade Completed #, 2000	Less than 9th Grade Completed %, 2000	9th-12th Grade Completed No Diploma #, 2000	9th-12th Grade Completed No Diploma %, 2000	High School Graduate #, 2000	High School Graduate %, 2000	Some College No Degree #, 2000	Some College No Degree %, 2000	Associate Degree #, 2000	Associate Degree %, 2000	Bachelor Degree #, 2000	Bachelor Degree %, 2000	Graduate/Prof. Degree #, 2000	Graduate/Prof. Degree %, 2000	Not Completed High School %, 2000	% w/ Bachelor Degree+ 2000
White	13,473	1,219	9.05	2,018	14.98	4,734	35.14	2,797	20.76	624	4.63	1,327	9.85	754	5.6	24.03	15.45
Whitfield	52,570	9,569	18.2	9,887	18.81	15,259	29.03	9,063	17.24	2,044	3.89	4,190	7.97	2,558	4.87	37.01	12.84
Wilcox	5,761	826	14.34	1,008	17.5	2,516	43.67	792	13.75	218	3.78	203	3.52	198	3.44	31.83	6.96
Wilkes	7,265	921	12.68	1,624	22.35	2,609	35.91	1,034	14.23	206	2.84	565	7.78	306	4.21	35.03	11.99
Wilkinson	6,509	632	9.71	1,293	19.86	2,697	41.43	1,049	16.12	215	3.3	421	6.47	202	3.1	29.57	9.57
Worth	13,979	1,510	10.8	2,920	20.89	5,330	38.13	2,480	17.74	539	3.86	795	5.69	405	2.9	31.69	8.58

\*Metropolitan County

Source: The 2002 Georgia County Guide