
PSFIN V8.9 Training

Georgia*FIRST* Wimba Training Series

Business Unit and SetID: What's the Difference?

February 9, 2010

Handout

Office of Information and
Instructional Technology
Version 1.0
Last Updated: 02/08/2010

GEORGIA*FIRST*
FINANCIAL, INFORMATION & REPORTING SYSTEMS FOR TOMORROW
A Project of the University System of Georgia

Agenda

- Wimba Ground Rules
- Review Objectives
- Individual Databases vs. Consolidated Environment
- Terminology
- How are Business Unit and SetID related
- How does Business Unit and SetID affect you
- Who updates what in the system
- Demonstration of concepts
- Q & A

Wimba Ground Rules

- Use either live audio or chat text box
- When submitting questions in the chat box, please submit them to “Main Room”.
- If using live audio:
 - “Mute” if not speaking
 - To make a comment or ask a question, “raise your hand” first; wait to speak until the facilitator addresses you and hold down the Ctrl key to speak

Objectives

- Review definition of application Business Unit, GL Business Unit, and SetID
- Identify how application Business Unit, GL Business Unit, and SetID relate to each other
- Identify the impacts Business Unit and SetID have on querying and reporting
- Review the items Financial Shared Services is responsible for updating in the system

Why is there a difference?

- Is Business Unit and Set ID the same thing?
- Why do we have a SHARE Set ID?
- Why is there a “B” Business Unit?

Why is there a difference?

- Pre-Consolidation
 - Each institution operated in an independent database (setid and business unit values were the same)
- Post-Consolidation
 - Each institution operates in one database
 - Some items are standardized (“shared” for all institutions)
 - Some items are unique to each institution
 - Infrastructure built to support shared vendor file

Terminology

- Business Unit
 - GL Business Unit
 - Application Business Unit
- SetID

Business Unit

- Represents a high-level organization of business information
- Logical units created within any organization for reporting purposes and don't have any predetermined restrictions or requirements
- Business Unit is for organization

Business Unit

- Examples
 - Peachtree University - GL
 - Peachtree University – AP Shared
 - Peachtree University – AP Banner
 - Peachtree University – AP Procurement
 - Peachtree University – Asset Management
 - Peachtree University – Purchasing
 - Peachtree University - Receivables



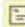


GL Business Unit

- Legal Entity
 - Tax ID tied to it
- Only one GL Business Unit per institution

Application Business Unit

- From the GL Business Unit comes the application Business Unit
 - Application BU maps to GL Business Unit
- An Application Business Unit can only be associated with one PeopleSoft General Ledger Business Unit

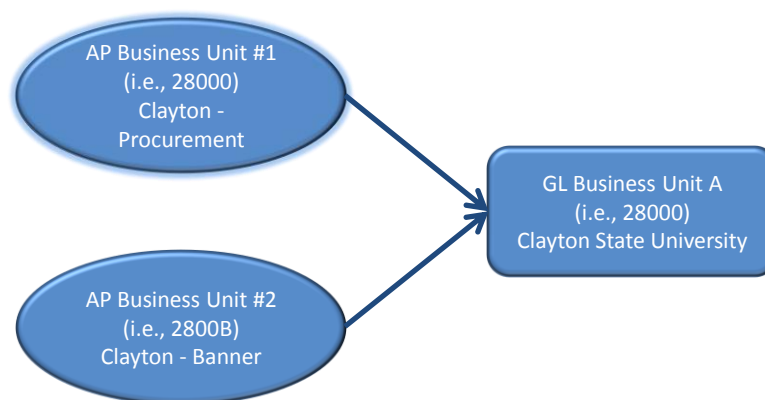
Application Business Unit

Definition		<u>Tax Options</u>	<u>Voucher Build</u>	<u>Matching</u>	<u>Payments</u>	<u>Numbering</u>	<u>Summary Invoice</u>
Business Unit:	28000	Description:	Clayton State University		Short Description:		CCSU
Accounting Information							
GL Business Unit:	28000	Ship To:	RECEIVING				
Accounting Entry Template:	STANDARD	Update Open Periods					
Posting Option							
*Post Date Indicator:	Use Current Date		<input checked="" type="checkbox"/> Open For Voucher Posting <input type="checkbox"/> Post Unapproved Vouchers <input type="checkbox"/> Post Unmatched Vouchers				
Miscellaneous							
Location:	MAIN		ID Numbers				
Revaluation Posting Option							
*Revalue Option:	Voucher						
 Save		 Return to Search		 Notify		 Add	
		 Update/Display					
Definition Tax Options Voucher Build Matching Payments Numbering Summary Invoice							

Business Unit

- Examples
 - General Ledger Business Unit
 - Peachtree University – GL (28000)
 - Application Business Unit
 - Peachtree University – AP Shared (2800S)
 - Peachtree University – AP Banner (2800B)
 - Peachtree University – AP Procurement (28000)
 - Peachtree University – Asset Management (28000)
 - Peachtree University – Purchasing (28000)
 - Peachtree University - Receivables (28000)

Acceptable



Application vs. GL Business Unit

- The GL Business Unit is very specific
 - Tax ID
- The Application Business Units are more generic
 - Can have multiple AP Business Units
- Can have separate Business Units for different functions
 - 28000
 - 2800B (Banner)
 - 2800S (Shared Vendor File)
 - Note: This business unit does not currently exist

Application Business Unit

- Transaction tables are keyed by business unit
 - Vouchers (VOUCHER, VOUCHER_LINE, DISTRIB_LINE)
 - Journals (JRNL_HEADER, JRNL_LN)
 - PO's (PO_HDR, PO_LINE, PO_LINE_DISTRIB)
- Used to group transactions

Set ID


- Represents a set of control table information or TableSets
 - A SetID is the label used to identify a TableSet
- Used to group control data
- TableSets enable you to share control information and processing options among business units
 - Goal is to minimize redundant data and system maintenance tasks

Sharing TableSet Information

- Advantages of sharing Tableset information:
 - Consistency across business units
 - Less table setup during implementation
 - Less table maintenance when operational

Set ID


- SetIDs are generally used for things such as Vendors, Chartfields, and Business Rules that govern how processing is to occur in the application
- SetIDs define accounting structure and processing rules

 GeorgiaFIRST Wimba Training Series

How do they relate

GL Business Unit
(28000)

© 2010 Board of Regents of the University System of Georgia. All Rights Reserved. 21

 GeorgiaFIRST Wimba Training Series

How do they relate

Application Business Units

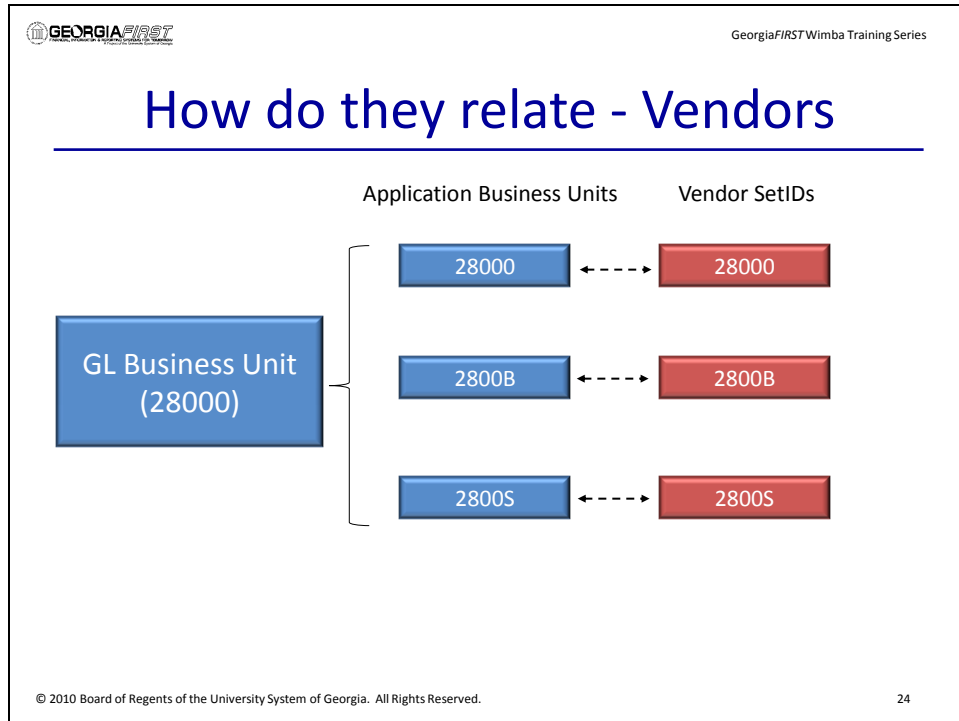
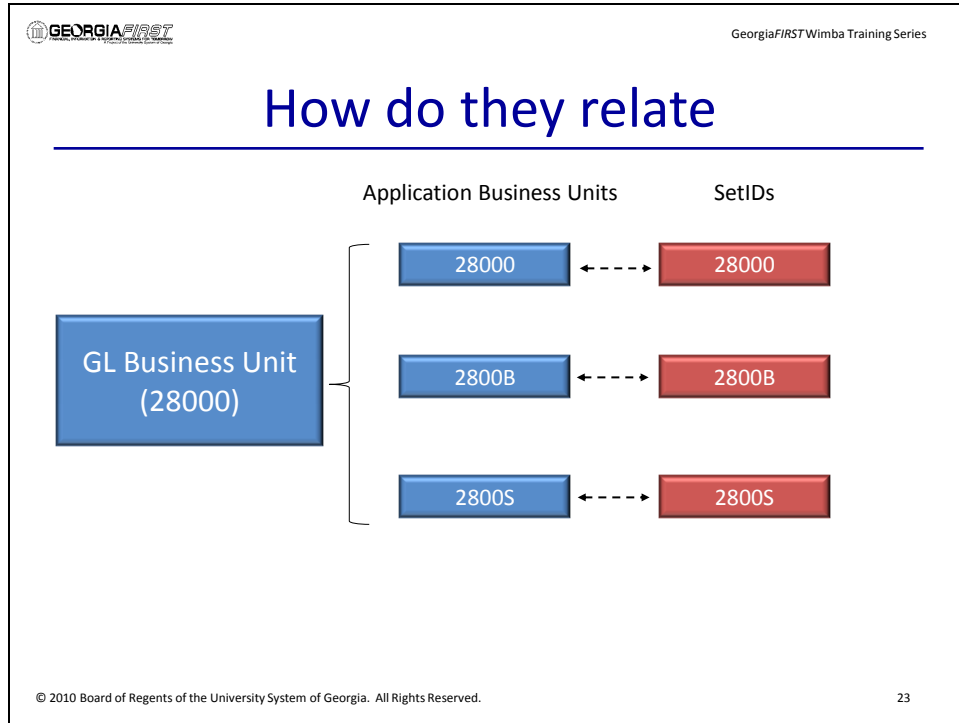
GL Business Unit
(28000)

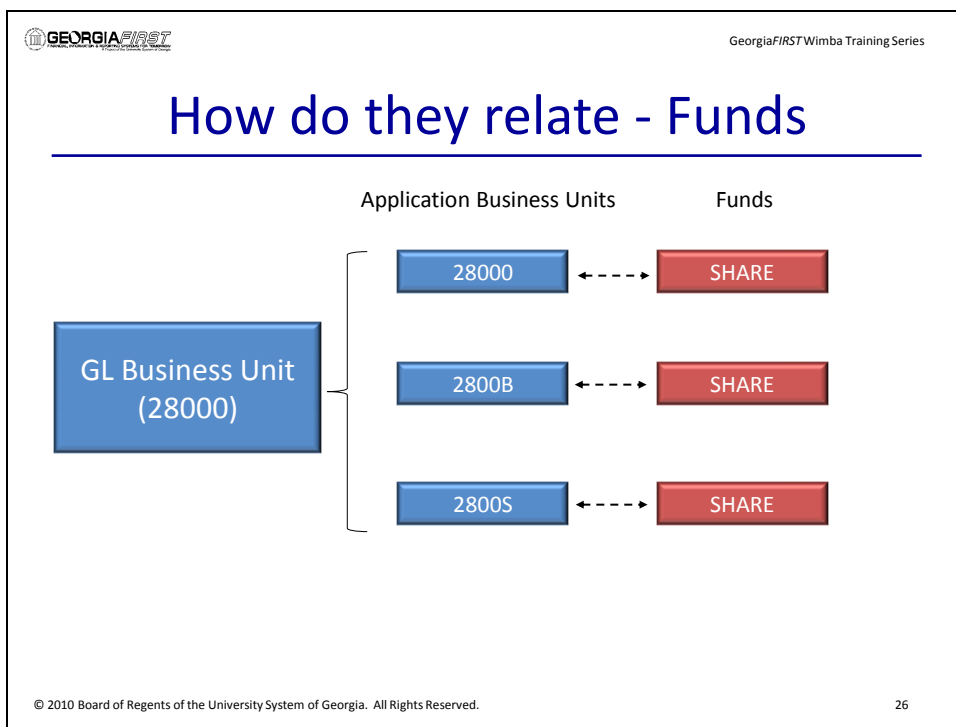
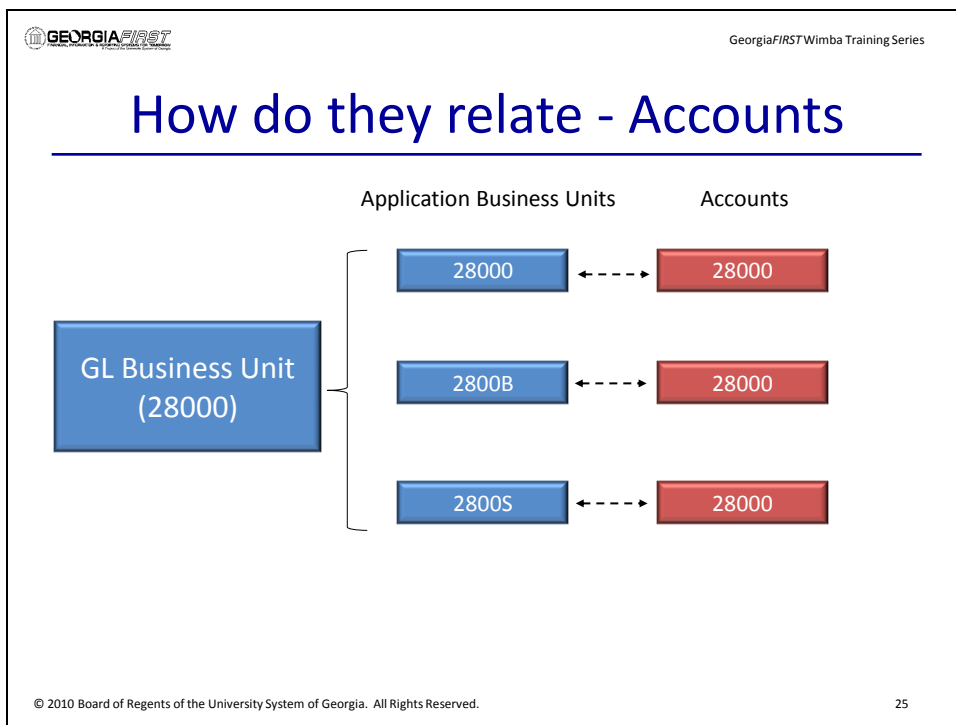
28000

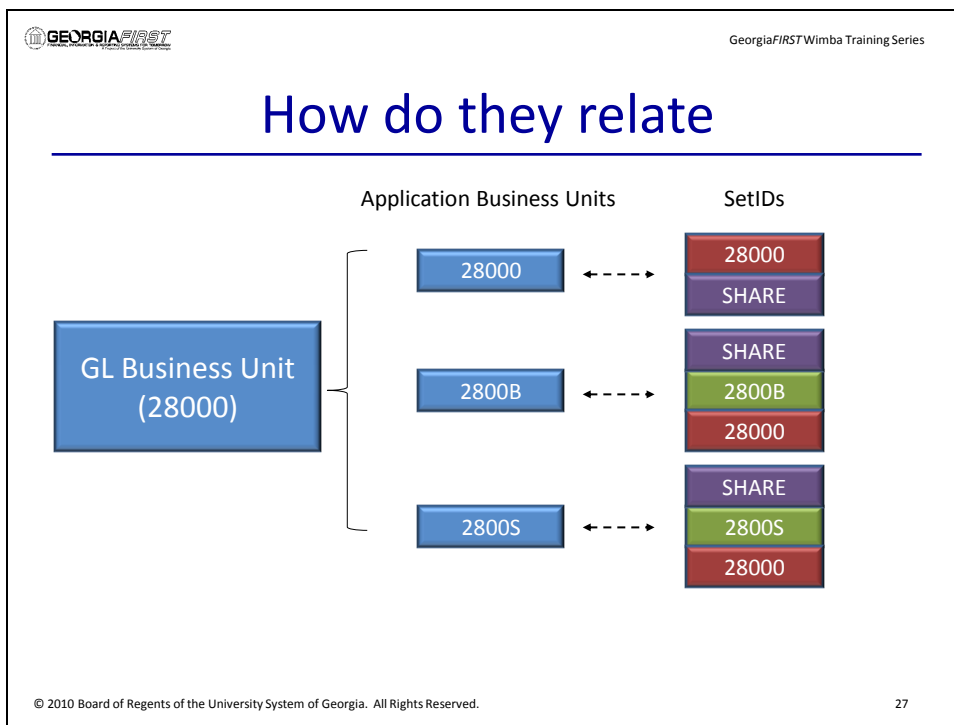
2800B

2800S

© 2010 Board of Regents of the University System of Georgia. All Rights Reserved. 22







Mapping of SetIDs to Business Units

- Records are grouped together into Record Groups
- Record Groups: Sets of logically and functionally-related control tables and views
- Record Group Control: In the TableSet record group control panel, you specify which SetID you want a business unit to use for each record group

Control Tables

- Control Tables store information that defines the accounting structure and processing rules used when a business transaction is recorded
- Examples:
 - Chartfield values
 - Closing rules
 - Calendars
 - Ledgers
- A Business Unit must have a complete set of control information defined before GL transactions can be created

Control vs. Transaction Tables

Control Tables	Transaction Tables
Generally keyed by SetID and effective-dated	Keyed by business unit
Store master lists of information: •Accounts •Departments •Trees •Calendars	Store business activity – transactions: •Journals •Balances •Vouchers •Invoices
Relatively static (except for maintenance)	Updated frequently

Record Groups

Record Group

Record Group ID: FS_20

Description: Funds

Short Description: Funds ☐ Force Use of Default SetID

Records in Group		Customize Find View 10	First	1-15 of 15	Last
*Record (Table) Name	Record Description				
AFFINTRA1_ALLVW	IntraUnit Affil vw - no effdt		+	-	
AFFINTRA1_AL_VW	IntraUnit Affil vw - no effdt		+	-	
AFFINTRA1_A_VW	IntraUnit Affiliate View		+	-	
AFFINTRA1_BU_LN	IntraUnit Affiliate RLR		+	-	
AFFINTRA1_BU_VW	IntraUnit Affiliate View		+	-	
AFFINTRA1_SC_VW	IntraUnit Affiliate View		+	-	
AFFINTRA1_VW	IntraUnit Affiliate View		+	-	
AP_TSYMBOL_VW	AP Federal TSYMBOL view		+	-	
FUND_ALL_VW	View of all Funds		+	-	
FUND_BUGL2_VW	Fund BU GL View		+	-	
FUND_BUGL_VW	Fund BU GL View		+	-	
FUND_LANG	Funds Related Language		+	-	
FUND_NB_VW	Non-budgetary View		+	-	
FUND_SC_VW	Fund Set Control View		+	-	
FUND_TBL	Fund Table		+	-	

TableSet Control

- A TableSet Control is a Business Unit
 - A business unit controls which tablesets you have access to

Question

- Would JRNL_HEADER or VOUCHER be in a record group?

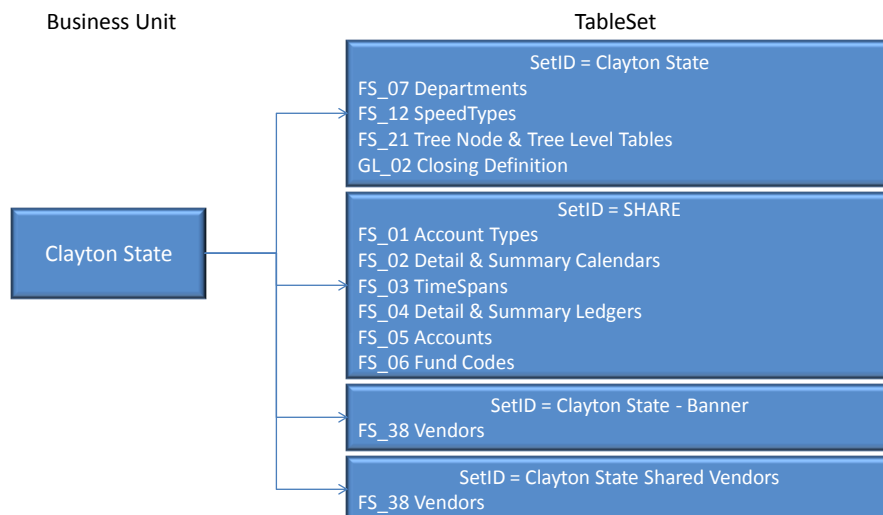
Question

- Would FUND_TLB, VENDOR, or GL_ACCOUNT_TBL be in a record group?

Tableset Controls


- Tableset Controls are comprised of Record Groups (logical groupings of functionally related control tables and views)
 - Record Groups are mapped to SetIDs within a Business Unit
 - PeopleSoft allows one SetID per Record Group
 - Each Business Unit has its own set of control data with a set control value of the same name as the business unit
 - The set control value is automatically created at the time the business unit is created and is based upon the default SetID that you supply

TableSet Control

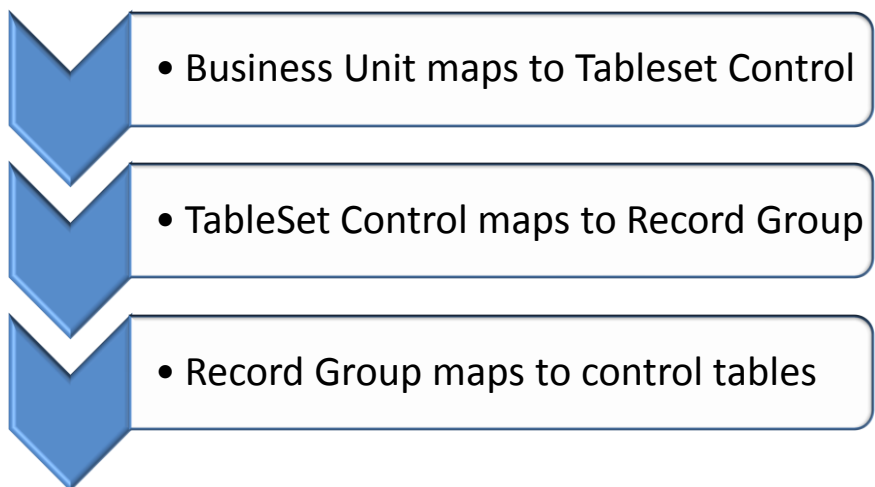


TableSet Control

Record Group		Tree	
Set Control Value:		2800B	
SetID			
*Default SetID:		28000	CCSU
Record Group Control			
Record Group ID	Description	*SetID	Short Description
FS_38	Vendor Tables	2800B	BANNER BU
FS_39	Banks	28000	CCSU
FS_40	Alternate Accounts	28000	CCSU
FS_41	Bar Code Setup Tables	SHARE	SHARE
FS_42	Document Sequencing	SHARE	SHARE
FS_43	Enterprise Activities	SHARE	SHARE
FS_44	VAT Apportionment	SHARE	SHARE
FS_45	ChartField1	28000	CCSU
FS_46	ChartField2	28000	CCSU
FS_47	ChartField3	28000	CCSU
FS_49	Commitment Control	28000	CCSU
FS_50	Commitment Control Closing	28000	CCSU
FS_51	Miscellaneous Charges	SHARE	SHARE
FS_52	Draft Types	28000	CCSU
FS_53	Government Certifications	SHARE	SHARE
FS_54	Contact Records	28000	CCSU
FS_55	Draft Sight Code	28000	CCSU
FS_56	Engagement Planning	SHARE	SHARE
FS_57	Book Code	SHARE	SHARE
FS_58	VAT BU Source Options	SHARE	SHARE
FS_59	InterIntraUnit Processing	28000	CCSU
FS_60	Adjustment Type	SHARE	SHARE
FS_61	Entry Event	SHARE	SHARE
FS_62	Chartfield Attributes	28000	CCSU
FS_63	Budget Reference	SHARE	SHARE


 GeorgiaFIRST Wimba Training Series

Setid Recap

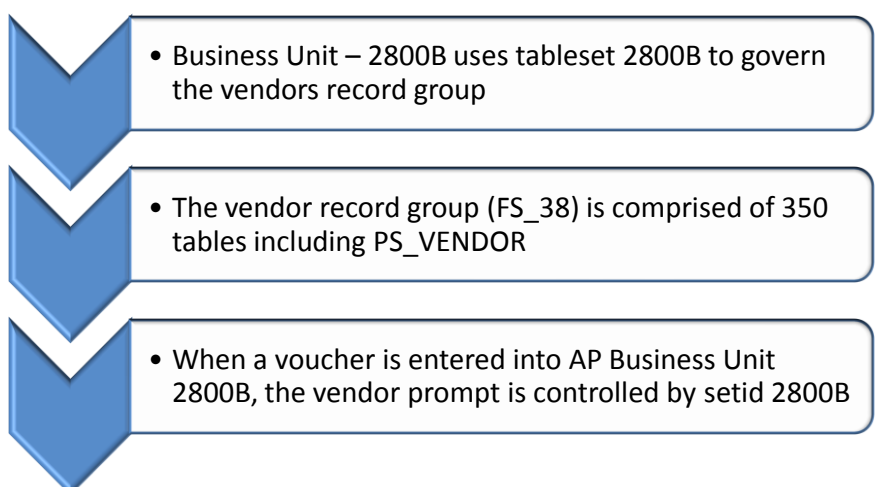


- Business Unit maps to Tableset Control
- TableSet Control maps to Record Group
- Record Group maps to control tables

© 2010 Board of Regents of the University System of Georgia. All Rights Reserved. 39

 GeorgiaFIRST Wimba Training Series

Setid Recap #1



- Business Unit – 2800B uses tableset 2800B to govern the vendors record group
- The vendor record group (FS_38) is comprised of 350 tables including PS_VENDOR
- When a voucher is entered into AP Business Unit 2800B, the vendor prompt is controlled by setid 2800B

© 2010 Board of Regents of the University System of Georgia. All Rights Reserved. 40

Setid Recap #2

- Business Unit – 28000 uses tableset 28000 to govern the fund record group
- The vendor record group (FS_20) is comprised of 15 tables including PS_FUND_TBL
- When a journal entry is entered into GL Business Unit 28000, the fund prompt is controlled by setid SHARE

Mapping of SetIDs to Business Units

Records	Record Group	SetID	TableSet Control/ Business Unit
DEPT_TBL	FS01	28000	28000
FUND	FS02	SHARE	28000
VENDOR	FS03	2800B SHARE 28000	2800B 2800S 28000

How does this affect you?

- Effect on entering transactions
- Querying and Reporting
- Who updates what in the system

Entering Transactions

- Example: Entering a Journal
- System first asks what Business Unit the journal is for (i.e., 28000)
- Once you enter/select the BU, you have identified what set of Record Group Controls that will be used for entering that journal

Entering Transactions

- Page Prompts:
 - Prompt on Fund, SetID for FUND_TBL is mapped to SHARE
 - Prompt on Account, SetID for GL_ACCOUNT_TBL is mapped to 28000/SHARE
 - Prompt on Department, SetID for DEPT_TBL is mapped to 28000

Querying and Reporting

- Need to specify the Business Unit or Set ID, depending on the record key
- When querying on GL_ACCOUNT_TBL, need to specify your regular SetID
 - Account numbers have been setup under both individual institution SetIDs and the SHARE SetID
- When querying on VENDOR records, need to specify SetID – either Regular or Banner

Who Updates What

- Financial Shared Services
 - Fund Code
 - Class
 - Program
 - New Paycycles
 - Ledgers
 - A1 Annual Calendar
 - Expense Types/Expense Type Groups
 - Business Calendar
 - Some Trees

Who Updates What

- Individual Institutions:
 - Vendors under B SetID
 - Vendors under Regular SetID
 - Department
 - Account
 - Project

Comprehensive Activity

- App Sharing
 - Demonstrate examples of AP and GL business unit and tableset sharing

Question

- Out of the following choices, which one is limited to only one per institution, and is considered a legal entity?
 - GL Business Unit
 - Application Business Unit
 - SetID

Question

- When adding a new Banner vendor to the system, which SetID do you use?
 - 28000
 - 2800B
 - 2800S
 - SHARE

Question

- Control tables are generally keyed by:
 - SetID
 - Business Unit

Question

- Transaction tables are keyed by:
 - SetID
 - Business Unit

Objectives

- Review definition of application Business Unit, GL Business Unit, and SetID
- Identify how application Business Unit, GL Business Unit, and SetID relate to each other
- Identify the impacts Business Unit and SetID have on querying and reporting
- Review the items Financial Shared Services is responsible for updating in the system

Archive

- The archive for this Wimba Training Session will be available no later than end of day, February 11, 2010.
- The archive and training materials will be posted to the GeorgiaFIRST website:
<http://www.usg.edu/gafirst-fin/training/archives/>