

The University of Georgia



Historic Preservation Master Plan

Facilities Officers Conference, October 26, 2017



College of Environment + Design
UNIVERSITY OF GEORGIA



Office of University Architects
for Facilities Planning
UNIVERSITY OF GEORGIA

Background

- 1992 State Agency Historic Resource Inventory
 - BOR largest holder of resources among state agencies
 - UGA largest holder of resources among USG units
- 1998 State Stewardship Law
- Getty Campus Heritage Initiative (2000-2007)
- BOR *Campus Historic Preservation Master Plan Guidelines*
- UGA is a widespread and diverse statewide entity:
 - Facilities in 21 Counties
 - Three Campuses – Athens, Griffin, Tifton
 - Research Facilities – Marine Institute, Skidway Institute
 - Agricultural Research and Extension – 4H
 - Forestry, Veterinary Medicine, etc.



What is the appropriate Historic Preservation Master Plan approach for The University of Georgia?



Presentation Outline

1. Team
2. Process
3. Inventory and Results
4. Historical Overview
5. Historical Context
6. Integrated Cultural Resource Management
7. Building Assessments
8. Operating Procedures & Implementation
9. Conclusions

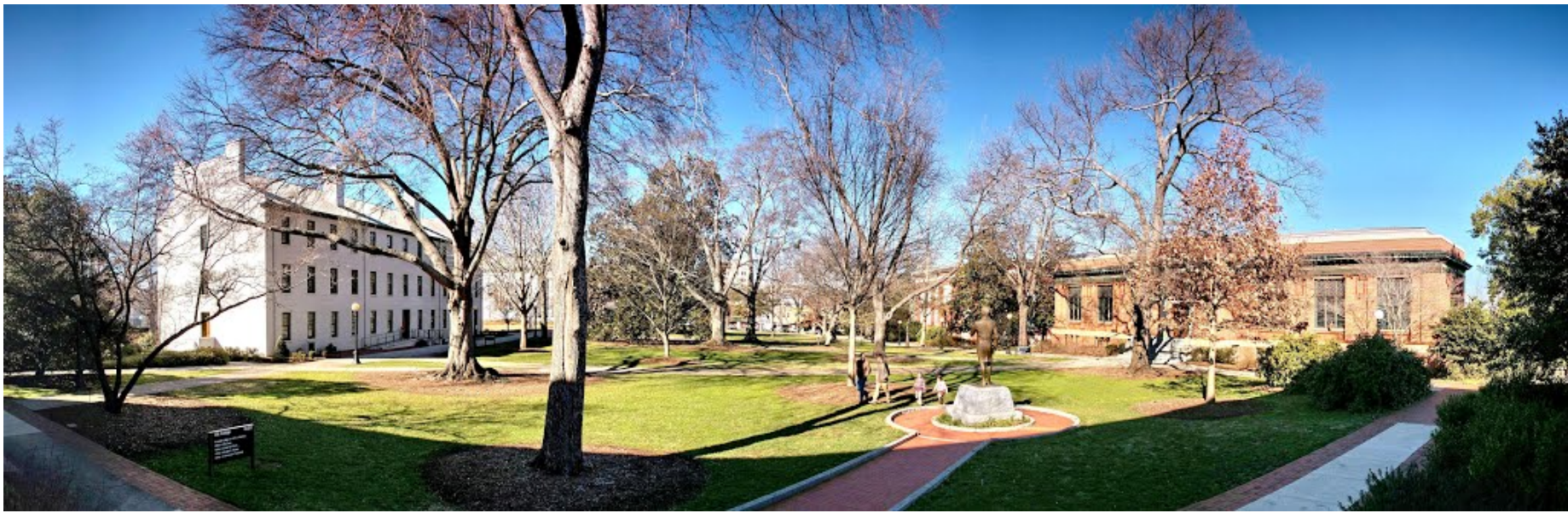
Team

1. **Historic Preservation Master Plan Steering Committee**
 - **Chair: Dan Nadenicek, Dean College of Environment + Design**

2. **UGA College of Environment + Design (CE+D)**
 - **Center for Community Design & Preservation**
 - **FindIt! Program (<http://findit.uga.edu/>)**
 - **Experiential Learning – 9 MHP & MLA Graduate Assistantships**
 - **Experiential Learning – CE+D intern support**

3. **Consultants**
 - **Wiss, Janny, Elstner Associates (WJE) Northbrook, IL**
 - **Panamerican Consultants, Mobile, AL**
 - **Heritage Strategies, Augusta, MN**
 - **Liz Sargent HLA, Charlottesville, VA**

4. **Office of the University Architects**





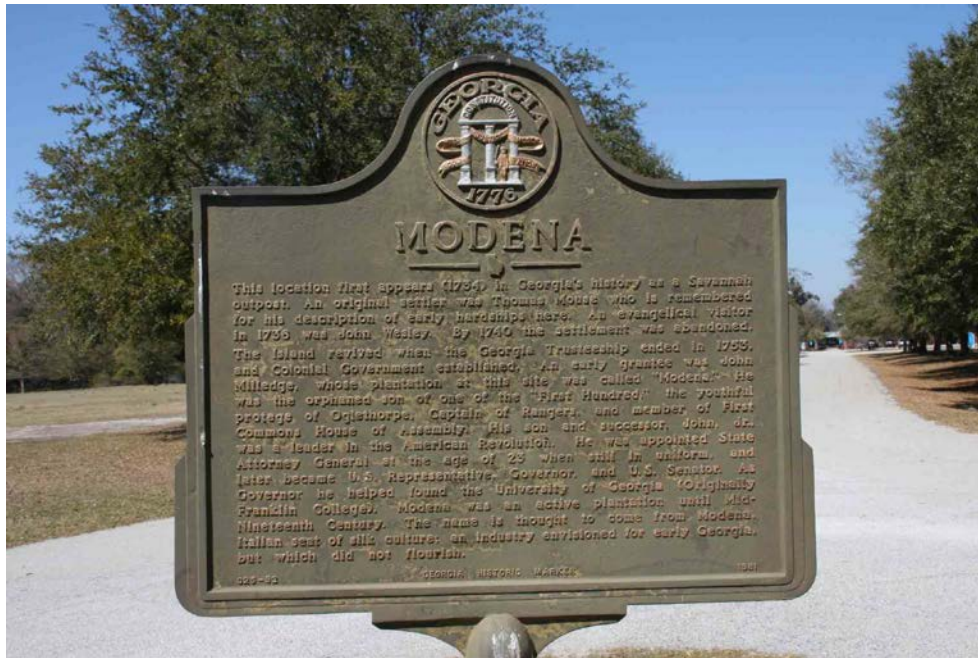












Process

Year One: Research and Inventory

- Partnered with UGA College of Environment and Design (CE+D) to create the Historic Resource Inventory
- Consultants provided hands-on training with FindIt! team members to develop survey forms, implements field procedure, and provide oversight and feedback on the survey process.
- Consultants initiated research for the timeline, historic contexts, as well as condition, significance, and integrity assessments.
- The Grand Tour: Rock Eagle 4-H, UGA-Griffin, UGA-Tifton, UGAMI, Skidaway Institute, Coastal Botanical Gardens, Mountain Research Station.

Process

Year Two: Plan Development

- Professional Consultants
- Preservation Constituents Workshop
- Facilities Stakeholders Meetings
- Development of Historic Background, Historical Context, and Buildings Assessments.
- Development of Standard Operating Procedures
- Development of Implementation Matrix

Inventory Phase

- 21 Georgia Counties Containing UGA Facilities
- Estimated 835 Buildings
- Unknown Historic Landscapes
- Unknown Archeological Sites



FindIt! Survey team in the field at Tybee 4H and Skidaway Institute of Oceanography

RESOURCE #: HISTORIC RESOURCE SURVEY FORM 160

1. Name of resource: Russell Hall (1907) 8. Date of construction: 1929

2. Location: 1425 Prince Ave, Athens 9. Altered (see item #26)

3. Total number of resources on site: 1 10. Addition (see item #26)

4. Number of each kind of resource on site: (answer below)

Building: 1 Site: 1 Landsc Feature: 1 Structure: 1 Object: 1

Outbuildings: 1 11. Moved / Destroyed (see item #26)

12. SHPO Evaluation: appears to meet NR criteria may meet NR criteria appears NOT to meet NR criteria because of more information needed (of/r/n) integrity / age / significance

5. Uses: **Current Use (6) & Original Use (7)**

Domestic / Residential
 Single dwelling
 Multiple dwelling
 Apartment
 Rowhouse
 Duplex
 Secondary structure
 Storage shed
 Garage / Carriage house
 Kitchen
 Privy
 Wellhouse
 Springhouse / Ice house
 Smokehouse
 Dwelling (secondary)
 Dairy
 Greenhouse / Pool house

Commercial
 Business / office
 Professional / office
 Bank/savings & loan
 Retail store / shop
 General store
 Restaurant / bar / cafe
 Hotel / inn / motel / b&b
 Department store
 Warehouse
 Multiple retail / shop ctr
 Professional team / trade org
 Market

Religious
 Church / religious structure
 Church school
 Church-related housing
 Campground / arboret / retreat
 Cemeterial site

Educational
 School
 Library
 College-related housing
 Research facility

Agriculture / Food Processing
 Agricultural outbuildings
 Barn / shed
 (milk / cattle / horse / dairy / wagon / machinery / implement)
 Tobacco
 Chicken coop
 Silo / Windmill
 Corn crib

Agricultural storage
 Cotton / Peanut warehouse
 Grain elevator
 Tobacco warehouse

Agricultural processing
 Animal / Fishing facility
 Agricultural fields
 Tree farm
 Irrigation facility

Industrial/Engineering
 Mill / processing / mg
 Mill / company housing
 Waterworks
 Reservoir / dam / water tower / canal
 Extractive facility or site
 Communications facility
 Energy facility

Transportation
 Rail / Road / H2O / Ped / Air
Government/Public
 Fire station
 Post office
 City / town hall
 Jail / prison / police station
 Public works
 Courthouse (co / fod)
 Millite district
 Govt office (type)
 Public housing

Entertainment / recreation / cultural
 Theater / opera hall / cinema / playhouse
 Museum / gallery
 Sports facility
 Outdoor rec / campground / picnic
 Auditorium
 Fair / amusement park
 Music fac. / bandstand
 Zoo

Common monument / marker
 Monument
 Bot. / horticultural garden

Funery
 Cemetery
 Grave / mausoleum
 Mortuary / funeral home

Military
 Battle site
 Fortification
 Military facility (type)
 Army / arms storage
 Military housing

Health care
 Hospital / Medical Clinic
 Business / office
 Spa / springs
 Nursing home / sanatorium

Civic / social
 Fraternal / patriotic org
 Club (common interest)
 Social / civic org
 Philanthropic housing

Work in progress
 Vacant/lost in use
 Unknown
 write in / see item #26

13a. (circle one)
 High style or elements of style

13b. Style(s) (in alphabetical order)
 No academic style

Art Deco
 Beaux Arts Classicism
 Chicago School
 Colonial revival
 Craftsman
 Dutch Colonial revival
 Early Classical revival
 English vernacular
 revival
 Richardsonian Romanesque
 Neoclassical revival
 Second Empire
 Shingle
 Spanish Colonial revival
 Stick
 Stripped Classical
 Tudor

International
 Italian Renaissance revival
 Italianate
 Mediterranean revival
 Moderne
 Neoclassical revival
 Prairie style
 Queen Anne
 Richardsonian Romanesque
 Romanesque revival
 Second Empire
 Shingle
 Spanish Colonial revival
 Stick
 Stripped Classical
 Tudor

N / A
 unknown
 write in / see item #26

14. Building Type(s)
 1 to 1 1/2 story types

single pen
 ranch
 Side Gable Cottage
 square
 double pen
 half-parlor
 saddlebag
 2 doors
 cent. door
 central hallway
 dogtrot
 Georgian cottage
 Sand Hills cottage
 Shotgun / Double shotgun
 Gabled ell cottage
 Queen Anne cottage
 New South cottage
 Pyramid cottage
 Saltbox
 English cottage
 Extended hall parlor
 Dungalow
 Front gable
 Side gable
 Hip
 Cross gable

Cont hallway
 Hall parlor
 Dbl pen
 Saddlebag
 Plantation plain
 Side hallway
 Gabled ell house
 Queen Anne house
 New South house
 American foursquare
 Georgian house
 Split level

unknown
 write in / see item #26

QUAD: Health Sciences
 LAT/LONG: 33.96460
-83.40386

composition/asphalt shingle
 metal
 standing seam
 pressed shingle
 pressed sheet
 corrugated sheet
 built-up tar and gravel
 clay tile

slate
 asphalt roll
 wood shingle
 concrete tile
 unknown
 write-in / see item #26

20a. Chimney placement (indicate # of each)

gable-end, exterior
 both gable ends
 gable-end, interior
 both gable ends
 double gable end
 both gable ends
 center
 off-center, ridge/line
 off-cr within roof surf

lateral interior
 lateral exterior
 multiple random
 outside add-on
 three or more chimneys

Chimney observed
 unknown
 write-in / see item #26

20b. Chimney material

cobblestone / rustic
 stuccoed masonry
 concrete block

Unknown
 write-in / see item #26

Inventory Phase

The FindIt! Team made a site visit to each individual resource. The resource was documented as a field form, photographed, and geospatial coordinates were collected.

21. Type of construction: (max 3)
 "bellows, fabric, / platform frame
 brick bearing
 stone bearing
 log
 mortise-and-tenon / brace frame
 post-and-beam (wood)
 metal / steel framing
 concrete block
 poured concrete (bearing wall)

concrete frame
 plankwall framing
 tile block bearing
 concrete slab
 glass block
 labby

unknown
 write-in / see item #26

22. Exterior Material: (max 6)
 wood
 board-and-batten
 vertical board
 novelty siding / shiplap/
 drop siding
 shingles
 flush board siding
 beaded tongue&groove
 half-timbering
 brick (note if handmade)
 common / American /
 ragging bond / veneer
 Flemish bond
 English bond
 stucco
 glass
 fieldstone / rubble /
 regular coursed stone
 random coursed stone
 rock-faced stone
 rusticated stone
 cobblestone / rustic
 stone panels
 log
 heavy
 V-notch / square notch
 half dovetail / dovetail
 saddle notch

metal
 wrought iron
 cast iron / pressed tin
 sheet metal / corrugated
 porcelain enamel steel
 write in

concrete
 conc. block / cinder blk
 discolorative concrete blk
 poured wall
 cast concrete detail
 textured concrete
 prefabricated panel
 labby

prism synthetics
 vinyl / aluminum siding
 tarpaper / asphalt sheet
 patterned asphalt
 asbestos siding
 permatone
 masonite siding
 plastic/fiberglass
 plywood / particle board
 insulbrick (composition)

unknown
 write-in / see item #26

23. Foundation Material: (max 3)
 Also Note: pier / pier with infill / continuous

brick
 stone
 concrete
 wood
 metal

unknown
 write-in / see item #26

24. Porch Configurations: (max 4)

verandah	location	stories	width	material	roof
wrap-around					
recessed	F	1	P	brick	flat
portico					
stoop					
balcony					
porte-cochere					
arcade					

Roof Types: (fill in above) NO PORCH AT ALL (not even a stoop)
 hip / shed or pant / gable / hood / conical / complex

25. Window Types: (max 3)

double hung sash	head (flat, etc.)	pattern (6/8, etc.)	shape (rect, etc.)
single-hung sash			
casement			
fixed	F		square
factory sash			
triple-hung sash			
jalousie			
pivotal sash			
unknown			write-in / see item #26

26. Physical Description: (write-in)

- Front facade has center pavilion that has recessed entry at right, brick block at right and covered patio on 2nd story and right.
 - At left, brick pavilion is 2 sets of 4 light square windows w/ concrete sills, painted metal panels above, and small flat overhangs.
 - Concrete band w/ 1st and 2nd stories.
 - No windows on 2nd floor of front.
 - Right facade has 3 bays of windows.
 - Rear has mechanical canopy protruding and leading back w/ raised entrance.
 - Left facade has brick and concrete stairway leading to 2nd story entrance.
 - extra "Russell Hall" sign on front pavilion.
 - Brick parapet w/ metal flashing.
 - Has concrete and brick patio in front between 1903 and 1910.

27. Outbuildings: (max 10) (include # of each kind)

barn	dairy / milking	pool house
privy	grainary	privy
livestock	seed house	roof cellar / potato bank
machinery / wagon	silos	secondary dwelling
blacksmith house	slave / servant house	smokhouse
carriage house	smokhouse	springhouse
chicken coop	stone	sweet potato house
corn crib	cotton house	tenant house
dairy	Delco gun shed / gas plant	well house
flower pit	garage	windmill
greenhouse	guest house	unknown
ice house	implement shed	write-in / see item #26
icebin	inroad use	
office		

28a. Landscape Features: (max 10)

yard setting

informal / picturesque	rural landscape / ag fields
casual / unplanned <td>field systems </td>	field systems
designed planting beds <td>fence / hedgerows </td>	fence / hedgerows
designed drives / walkways <td>secondary </td>	secondary
formal / geometric <td>terracing / contouring </td>	terracing / contouring
terracing / retaining walls <td>troughs / orchards </td>	troughs / orchards
street trees / landscaping <td>drainage / irrigation </td>	drainage / irrigation
street town / courthouse sq <td>forest / woods </td>	forest / woods
street furn / fountain <td>natural </td>	natural
artwork / monument <td>planted </td>	planted
ornamental paving <td>unknown </td>	unknown
median <td>write-in / see item #26 </td>	write-in / see item #26

28b. Surrounding Resources:

now	old	fixed old and new

29. Historical Themes: (max 5)

architecture/agriculture
 commerce / industry
 religion / education
 social / cultural devel
 transportation
 govt / politics / law
 recreation / entertainment

African Amer. / Native Amer. history
 other minority and ethnic groups
 engineering / landscape arch
 planning / military
 exploration / settlement
 conservation / public works
 arts / letters

30. Significance (use sparingly):
 architectural type (common / rare)
 architecture style (common / rare)
 architectural technique (common / rare)
 architectural design
 craftsmanship

history
 development
 activity
 person
 event

NAME: AS
 DATE: 10 Oct 2014

31. Description(s) of Environment

town (residential/commercial)	vacant lots
suburban (residential/commercial)	industrial setting/park
urban (residential/commercial)	strip development
rural (agricultural/forested/non-comm)	designed landscape
mixed use	mixed use

(write-in)
UG4
Health Sciences

Inventory Phase: Results

Building Resources - 737 Buildings Documented

- **Putnam County:** 91, Rock Eagle 4-H Camp, Ag Research
- **Tift County:** 80, UGA Tifton
- **Chatham County:** 49, Tybee 4-H Camp, Skidway Institute of Oceanography, Coastal Botanical Gardens, MAREX
- **McIntosh County:** 48, Marine Institute MAREX
- **Lumpkin County:** 30, Washega 4-H Camp
- **Spalding County:** 25, UGA Griffin
- **Oglethorpe 25, Sumter 15, Union and Whitfield 12 each**

Inventory Phase: Results

Cultural Landscapes – 55 Landscape Documented

Defined as a geographic area, including both cultural and natural resources and the wildlife or domestic animals therein, associated with a historic event, activity, or person or exhibiting other cultural or aesthetic values.



Inventory Phase: Results

Archeological Resources

- Archaeological sites are often in “our own backyard”
- An archaeological site is where there is evidence of human activity in the past
- The context of artifacts and features is what gives a site archaeological value



Inventory Phase: Results

Historic Resource Inventory


Microsoft Access database built to manage Historic Resource Inventory.

First comprehensive database and inventory of historic resources.

Invaluable facilities management tool, already being utilized.

To be web mounted to a GIS layer on the Campus Interactive Map.

Data can be exported to GNAHRGIS (Georgia's Natural Archeological and Historic Resource GIS system).

 Summary List - University of Georgia Buildings		
<i>UGa Building No.</i>	<i>Building Name</i>	<i>Date</i>
Decatur		
8783		
4850	RESIDENCE ATTAPULGUS 1 SUPERINTENDENTS	1952
4851	RESIDENCE ATTAPULGUS 2	1957
4858	ATTAPULGUS RESEARCH CENTER	1940
4860	GENERAL PURPOSE BARN	1941
4862	EQUIPMENT SHED	1940
4865	PUMP HOUSE AND TANK	1952
4866	PUMP HOUSE AT RESIDENCE 1	1952
Floyd		
3604	ANIMAL SCIENTIST (STAFF) HOME	1962
3611	CATTLE FEEDING BARN	1971
3634	MACHINERY SHOP	1968
3641	STORAGE	1945
Glynn		
5801	MOTEL A	1960
Gordon		
3654	LIVESTOCK PAVILLION	1975
3666	REDBUD DWELLING	1966
3667	PUMPHOUSE #1	1966
Jasper		
3851	LOYD RESIDENCE	1810
Lumpkin		
5322	RECREATION HALL	
McIntosh		
6002	SAPELO ISLAND TRAILER A	1973
6014	GARDNER COTTAGE NO2	1934
6015	GARDNER COTTAGE	1934
6016	SAPELO POWER HOUSE	1934
6025	SLATHOUSE	1953
6062	SHELL HAMMOCK NO 1	1934
6063	SHELL HAMMOCK NO 2	1934
6064	SHELL HAMMOCK NO 3	1960
6065	SHELL HAMMOCK NO 4	1960
6066	SHELL HAMMOCK NO 5	1960

Page 1 of 19

Preservation Constituents Workshop

- USG/BOR
- Georgia State Historic Preservation Office (SHPO/HPD)
- Georgia Trust for Historic Preservation
- Athens-Clarke Heritage Foundation
- UGA Environmental Safety Division
- UGA Masters of Historic Preservation Program
- UGA Anthropology/Archeology Department
- Steering Committee



Facilities Stakeholder Meeting

- Facilities Management Division (FMD)
- Office of the University Architects (OUA)
- University Housing
- College of Agriculture and Environmental Science (CAES)
- Warnell School of Forestry and Natural Resources
- School of Veterinary Medicine
- The Big “B”s: UGAMI, UGA-Tifton, UGA-Griffin, Skidway Institute



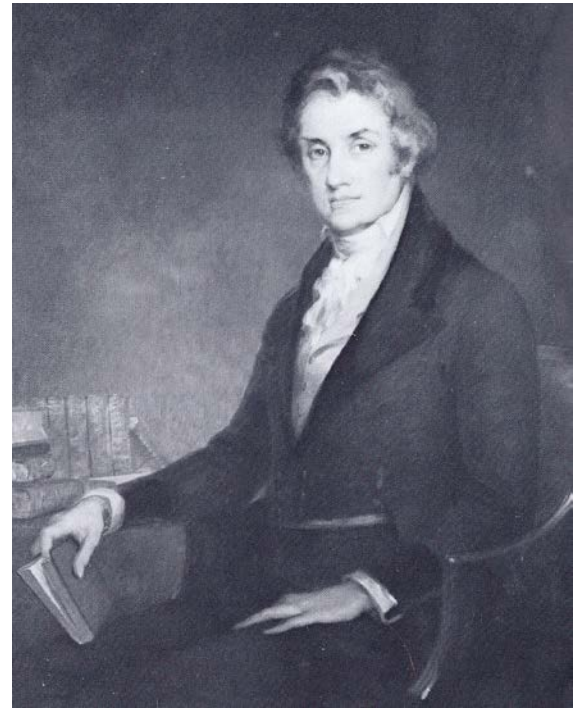
Historical Overview

- **Foundation Period 1785-1865**
- **New Approaches 1866-1899**
- **A Maturing Institution 1900-1945**
- **Modern Era 1946-1972**
- **Major Research University 1973-Present**

Historical Overview

Foundation Period 1785–1865

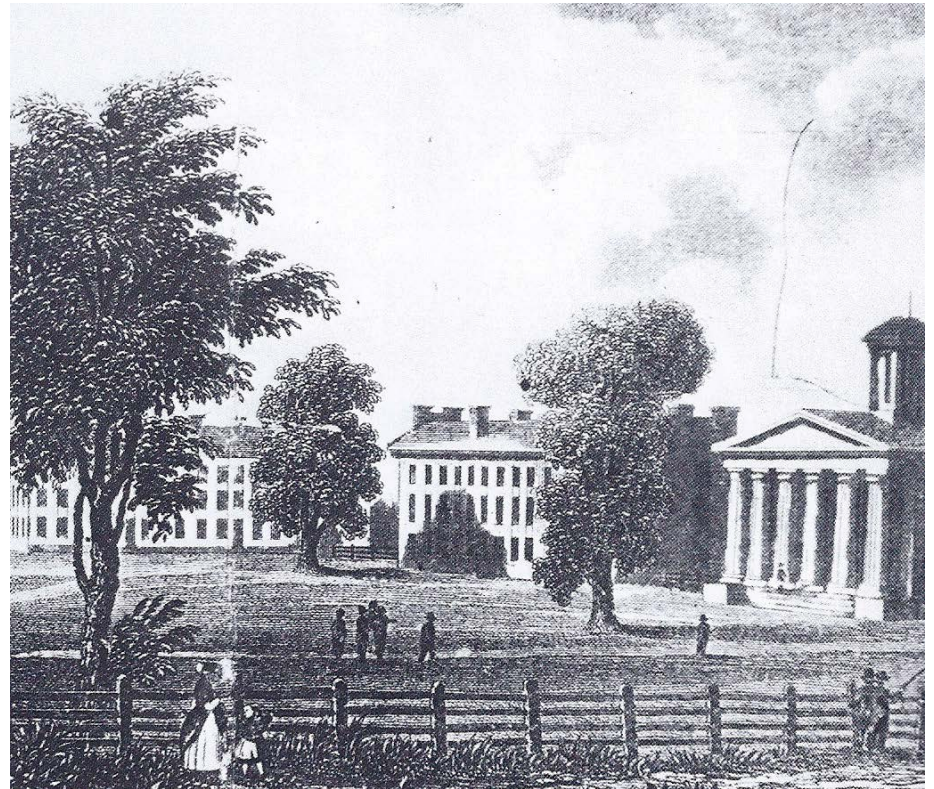
- **Presidents: Baldwin, Meigs, Brown, Finley, Waddel, Church, and Lipscomb**
- Creation of Athens campus area now known as “North Campus”
- Constant struggles over funds, student enrollment, role of professors, role of students, curriculum, role of education
- Civil War closes the School



Historical Overview

Foundation Period 1785–1865

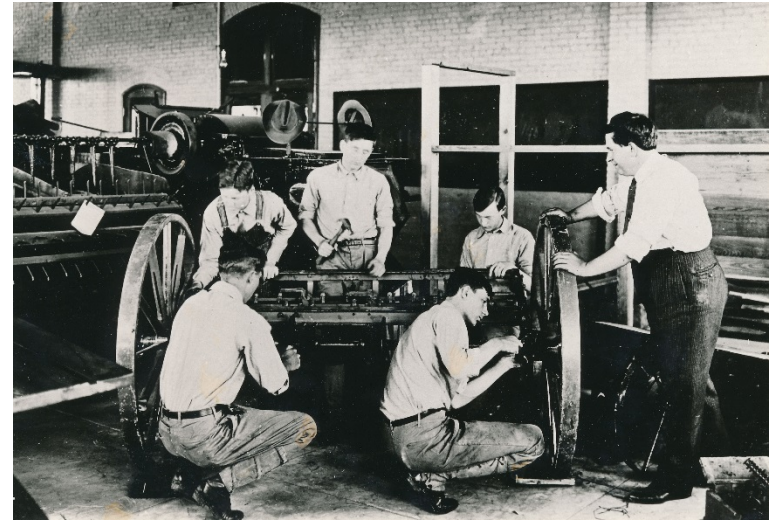
- 1806 School's first permanent building constructed – Franklin College/Old College
- 1862 Morrill Act passed by Congress, providing funding for establishment of Agricultural Colleges – USDA is formed
- 1864 School closes its doors - Civil War



Historical Overview

New Approaches 1866–1899

- **Presidents: Lipscomb, Tucker, Mell, Boggs, Hill**
- School reopens its doors and a new era begins
- Rise of the importance of Agricultural Education
- First experiment station created at Griffin
- Rise of football



Historical Overview

New Approaches 1866–1899

- 1874 Georgia State College of Agriculture and Mechanic Arts, a department of UGA, opens
- 1887 Hatch Act provides for establishment of Experiment Stations
- 1889 Georgia Experiment Station, Griffin, opens
- 1890 Morrill Act expanded
- 1892 Football is first played at UGA Athens
- 1898 The bulldog is first associated with UGA football



Historical Overview

A Maturing Institution 1900–1945

- **Presidents: Hill, Barrow, Snelling, Sanford, and Caldwell**
- Women admitted
- Expansion in numbers of programs offered
- Physical expansion of Athens' campus to the south
- UGA participates in CCC, WPA, PWA, RA programs
- Two additional experiment stations at Tifton and Blairsville
- Rise of Extension Service and 4-H



Historical Overview

A Maturing Institution: Agricultural Education

- 1906 Adams Act provides Federal funding for original research
- 1914 Smith-Leaver Act establishes the Cooperative Extension Services (4-H)
- 1918 Georgia Coastal Plain Experiment Station, Tifton, opens
- 1930 Georgia Experiment Station initiates work at Eatonton; Mountain Research Station opens
- 1935 Bankhead-Jones Act provides funding agricultural funding aid



Historical Overview

A Maturing Institution: College Life

- 1917–1918 WWI
- 1918 Women admitted
- 1935 4-H Camp Wilkins opens on Athens, first in the nation
- 1936 UGA Archaeology begins at Rock Eagle site
- Late 1930s PWA funds cause a building boom on the Athens campus
- 1939 WWII begins in Europe, and US moves into Protective Mobilization
- 1941–1945 WWII



Historical Overview

Modern Era 1946–1972

- **Presidents: Caldwell, Rogers, Aderholt, and Davison**
- Period of enormous, unprecedented growth in numbers of students and physical plant at Athens campus, resulting in part from the G.I. Bill
- Period of social and political unrest in the country at large and at UGA
- Black students admitted to university
- Experiment stations and branches, and the Extension Service and 4-H, formally placed under university administrative structure
- Rise of 4-H camps
- Football becomes a powerhouse



Historical Overview

Modern Era 1946–1972

- 1946 Cold War begins
- 1950 Northwest Georgia Experiment Station opens
- 1952 Southwest Georgia Experiment Station Opens
- 1955 Eatonton Project given to UGA by USDA
- 1961 Black students admitted; Institute of Ecology founded
- 1970 Kent State and Jackson State shootings; UGA students peacefully demonstrate throughout the period



Historical Overview

Major Research University 1973–Present

- **Presidents: Davison, Stanford, Knapp, Adams, Morehead**
- Carnegie Commission on Higher Education gives UGA its highest ranking, “Research University I”
- UGA President Knapp instrumental in creating HOPE Scholarship program
- Designated a Sea Grant College
- Since 1995: 8 Rhodes Scholars, 5 Gates Cambridge Scholars, 3 Mitchell Scholars, 49 Goldwater Scholars, 12 Truman Scholars, 12 Udall Scholars, and 49 Fulbright Scholarships (2015)



Historical Overview

Major Research University 1973–Present

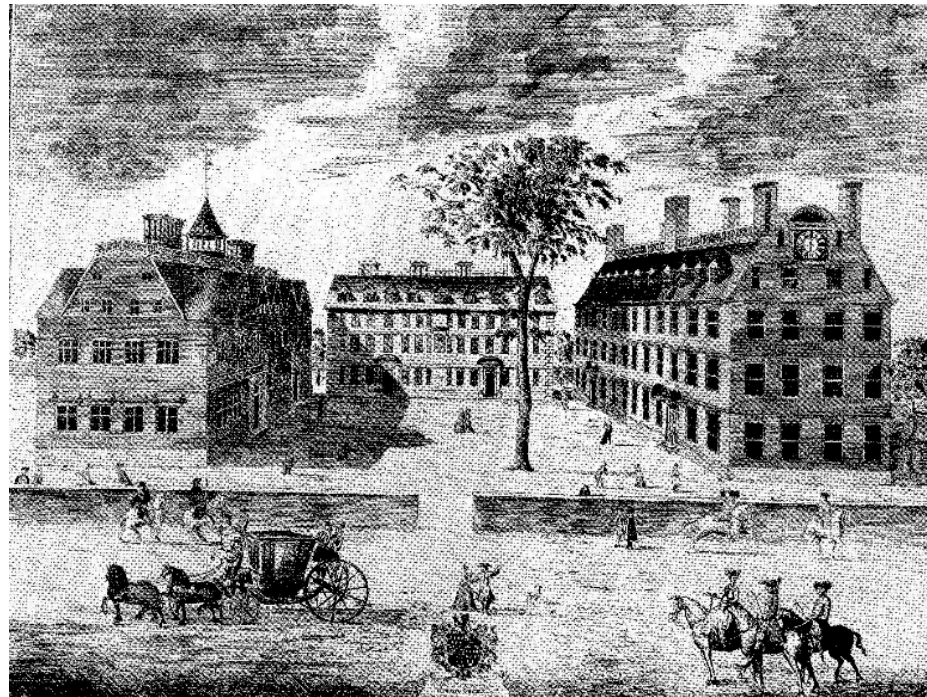
- 1973 Research University I
- 1975 Skidaway Institute of Oceanography founded
- 1983 Bamboo Farm given to UGA by USDA
- 1996 Summer Olympics Soccer Games hosted at Sanford Stadium
- 2003 first undergraduate programs at Tifton Campus
- 2005 first undergraduate programs at Griffin campus



Historic Contexts

Campus Planning in America

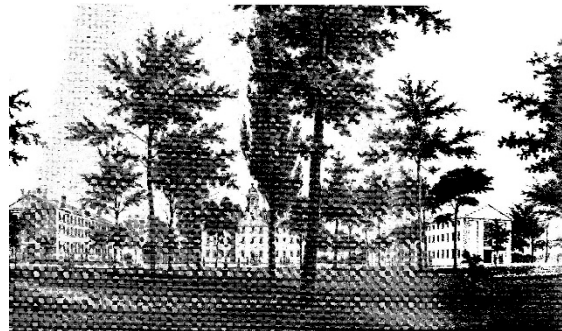
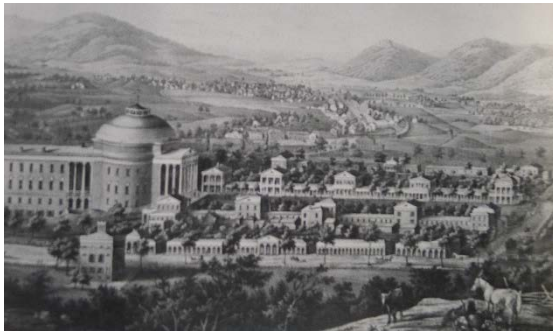
- Early Academic Institutions, the Colonial College (1636–1769)



Historic Contexts

Colleges and Universities for a New Nation (1783–1860)

1. The Influence of Greek Revival Architecture and Neo-Classicism on American College Campuses (1810–1850)
2. Expansion of the College Curriculum (1810–1850)
3. The Didactic Role of Sublime Nature; Mythmaking and Commemoration (1810–1860)



Historic Contexts

Land Grant Institutions (the Morrill Acts of 1862 and 1890) and the Democratic College (1862–1945)

1. The Gothic Style (1862–1935)
2. Field and experiment stations (1870–1930)
3. Women's education—co-education, Women's colleges, Normal Schools (1850–1945)
4. Agricultural Education—4-H, The Cooperative Extension (Smith-Lever Act of 1914), and Agricultural Experiment Stations (Hatch Act of 1887) (1902-2015)
5. Forestry Education (1898–2015)



Historic Contexts

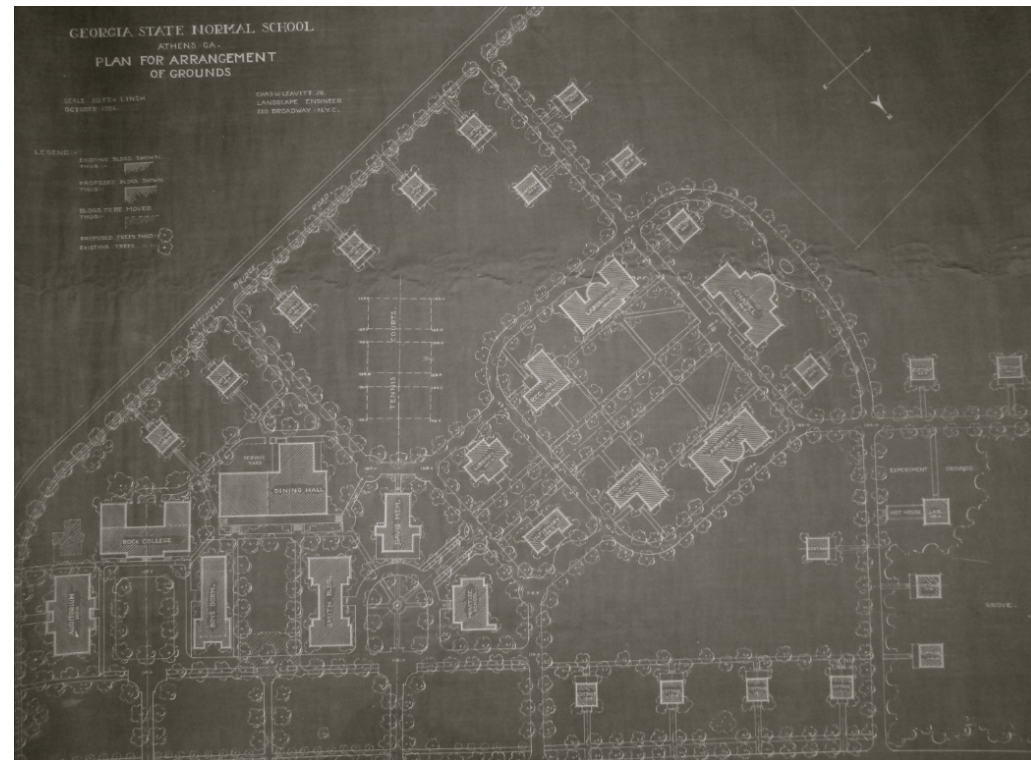
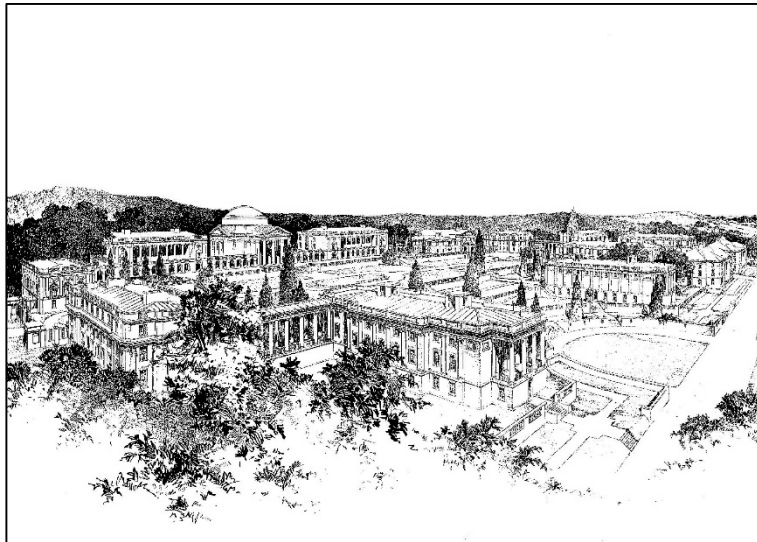
The City and University Beautiful Movements, College Planning, and Beaux Arts Design (1893–1930)



Figure 18: 1905 Leavitt Plan

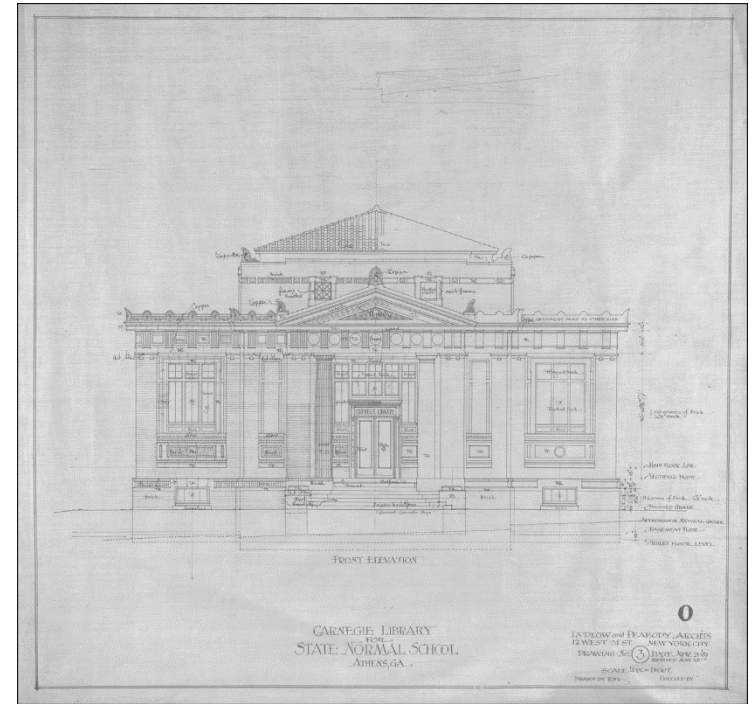
Historic Contexts

The City and University Beautiful Movements, College Planning, and Beaux Arts Design (1893–1930)



Historic Contexts

Progressivism and Educational Theory (1890–1920)



Historic Contexts

The Influence of Modernism (1912–1980)

1. Mid-Century Modern (1945–1968)
2. Modernism beyond (1969–1980)
3. Urban Renewal (1948 – 1966)



Historic Contexts

Contemporary Campus Landscapes and a Return to Tradition (1995–2015)



- Comprehensive Historic Resource Inventory
- Developmental History
- Establishment of Contextual Framework
- Constituent and Stakeholder Input

What is the appropriate Historic Preservation Master Plan approach for The University of Georgia?

GIVENS:

- Very large resource pool.
- Vast geographic distribution.
- Recognition that Historic Preservation exists within a larger planning environment at the University ... the job of the preservation plan is to inform the master planning process and not dictate the master planning process.
- Complex, non-cohesive, incomplete history and context.
- Complex management structures within the University – Central Administration, Colleges, Schools, Research Stations, Satellite Campuses, Housing, etc.
- Known Problem Areas: Demolitions and Archeology.
- A strong desire not to thicken the bureaucracy.
- Living document and living process.
- More potential work than manageable for UGA, BOR and HPD.

RESEARCH:

- Review of GEPA and State Stewardship Law
- Review of Getty funded plans
- Review of BOR Campus Historic Preservation Plan Guidelines
- Review of other BOR unit Preservation Plans
- Analysis of state agency submittals to HPD from 2010 to 2015. *What are others agencies and BOR units doing with regard to State Stewardship compliance?*

CONSULTATION:

- Met with Environmental Review Staff at HPD.
- Here is our reading of the law and policy, our givens, the product of this research ... *What do you want to see?*

- Federal Section 110: Agency Planning
- Integrated Cultural Resource Management Plans (ICRMP)

INTEGRATED CULTURAL RESOURCE MANGEMENT PLANS

a.k.a ... ICRMPs

- Department of Defense (DOD) tool
- *National Park Service-28-A-2*: “...Effective cultural resource management serves to (1)integrate cultural resources into other park planning and management processes, (2) avoid or minimize adverse effects on cultural resources ...” (NPS-28-A-2)
- *Department of Defense Instruction 4715.3: Environmental Conservation Program* (5/3/1996)
- *Army Regulation (AR) 200-1*
- Currently used widely by DOD for ensuring CRM procedures are followed as part of base/facility master planning
- Front loads preservation and archeology into the planning process.
- Use of Flowchart or Matrix to implement **Standard Operating Procedures.**

Building & Landscape Assessments

The building and landscape assessments are a case by case evaluation of a resource's historic value to provide the framework for determining correct procedure.

HPMP Resource Assessments evaluate:

- History
- Context
- Significance
- Condition
- Integrity

Resources are categorized 1 to 5 scale. Categories 1 and 2 are consistent with *BOR Preservation Master Plan Guidelines*. Categories 3 -5 have been added specifically to address resources not accommodated by Categories 1 and 2.

Building & Landscape Assessments

Category 1 – Resources that are individually listed or meeting eligibility criteria

Category 2 – Contributing resources within a listed or eligible historic district

Category 3 – Other resources with historic value

Category 4 – Non-historic resources with other inherent value

Category 5 – Non-historic resources

Building & Landscape Assessments

Griffin Campus – Resources Assessment Summary					Draft - February 10, 2017
UGA Building No.	Historic/Current Name	Date(s)	NR Status	HPMP Assessment Category	Character Area
4486	Visitor Housing (former Director's residence)	1948		2	Historic Campus Entry
	Entry gate	by 1928		2	Historic Campus Entry
	Foundation	By 1954		Undetermined	Historic Campus Entry
	Turf and plantings	Undetermined		Undetermined	Historic Campus Entry
	Fence	post-2002		5	Historic Campus Entry
	Identity sign	post-2002		5	Historic Campus Entry
	Georgia Historical Marker	1958		3	Historic Campus Entry
	Access road	post-2002		5	Contemporary Entrance and Parking
	Visitor parking	post-2002		5	Contemporary Entrance and Parking
	Sidewalk	post-2002		5	Contemporary Entrance and Parking
4416	Flynt Building	1928		1	Historic Academic Core
4482	Stuckey Conference Center	1954		2	Historic Academic Core
4413	Cowart Building	1948		2	Historic Academic Core
4405	Mule Barn	1912		1	Historic Academic Core
4414	Research Services Building and Dairy Barn	1912; addition 1940		1	Historic Academic Core
4417	Biological Agricultural Engineering (BAE) Building	1952		2	Historic Academic Core
4408	Sanford Barn	1938		1	Historic Academic Core
4419	Gin and Shop Building	circa 1938		1	Historic Academic Core
4401	Agricultural Engineering and Plant Operations Shop	1957		2	Historic Academic Core
4426	Stress Physiology Building	1940		2	Historic Academic Core
4442	Plant Introduction Greenhouse and Headhouse	1966 or earlier		2	Historic Academic Core
4460	Micronutrient Research Building	1971		3	Historic Academic Core
4403	Metabolism Barn	1938-1957		2	Historic Academic Core
4415	Forage Dryer	1957-1962		2	Historic Academic Core
4441	Grain Forage Greenhouse and Headhouse	1954-1962		2	Historic Academic Core
4446	Turf Science Building	by 1975		4	Historic Academic Core
4421	Entomology and Horticultural Greenhouse and Headhouse	1957		2	Historic Academic Core
4461	Horticultural Greenhouse	1971		3	Historic Academic Core
4445	Pathology Greenhouse	1962		2	Historic Academic Core
4457	S-9 Lab Building	1969		3	Historic Academic Core

Standard Operating Procedures

- **SOP 1: Campus Preservation Officer** – *Establishes the Campus Preservation Officer per State Stewardship guidelines.*
- **SOP 2: Consultation and Reporting** – *Establishes formal process for consultation and recordation of consultation activities.*
- **SOP 3: Recordation and Curation** – *Establishes guidelines for archiving record documents for historic preservation related activities.*
- **SOP 4: 10 Year Reevaluation** – *Provides for regular 10 years updates to Historic Resource Inventory and reevaluation of Historic Preservation Master Plan.*

Standard Operating Procedures

- **SOP 5: Archeology** – *Provides a framework for ground disturbing activities and related archeological procedure.*
- **SOP 6: Historic Resource Studies** – *Establishes guidelines for development of appropriate historic resource studies.*
- **SOP 7: Best Management Practices** – *Provides Best Management Practices (BMPs) for routine and corrective maintenance for buildings and landscapes.*
- **SOP 8: Campus Preservation Officer (CPO) Consultation** - *Establishes procedures for on-campus reviews by the Campus Preservation Officer.*
- **SOP 9: State Historic Preservation Office (SHPO) Consultation** - *Establishes procedures for state level reviews by the State Historic Preservation Office.*
- **SOP 10: Determination of Eligibility** – *Provides guidelines for requesting a “Determination of Eligibility” by the State Historic Preservation Office*

Standard Operating Procedures

- **SOP 11: Assessment of Impact/Effect** – *Provides guidelines for interpreting impacts/effects as determined by the State Historic Preservation Office.*
- **SOP 12: Demolition** – *Establishes procedure for demolition and dispossession of historic structures regarding the State Historic Preservation Office and Board of Regents.*
- **SOP 13: Mitigation** – *Explains the role of mitigation requirements resulting from State Historic Preservation Office review of proposed actions.*
- **SOP 14: Public Hearings** – *Reiterates UGA's existing GEPA policy with regard to conditions requiring a public hearing of a proposed action.*

ACTIONS

ASSESSMENTS

	Master Planning	Routine Maintenance	Corrective Maintenance	Minor/Moderate Rehabilitation	Extensive Rehabilitation	Additions & New Construction	Demolition & Dispossession	Ground Disturbance
Category 1	SOP 8	If NO material or character altering change SOP 7 If material or character altering change SOP 8	SOP 8	SOP 8	SOP 6 SOP 9 SOP 10	SOP 5 SOP 6 SOP 9 SOP 10	SOP 6 SOP 9 SOP 10	SOP 5
Category 2	SOP 8	If NO material or character altering change SOP 7 If material or character altering change SOP 8	If NO material or character altering change SOP 7 If material or character altering change SOP 8	SOP 8	SOP 6 SOP 9 SOP 10	SOP 5 SOP 6 SOP 9 SOP 10	SOP 6 SOP 9 SOP 10	SOP 5
Category 3	SOP 8	SOP 7	SOP 7	If material or character altering change SOP 8	SOP 6 SOP 8	SOP 5 SOP 6 SOP 8	SOP 6 SOP 9 SOP 10	SOP 5
Category 4	SOP 8	SOP 7	SOP 7	If material or character altering change SOP 8	SOP 6 SOP 8	SOP 5 SOP 6 SOP 8	SOP 6 SOP 9 SOP 10	SOP 5
Category 5	NONE	NONE	NONE	NONE	NONE	NONE	SOP 6 SOP 9 SOP 10	SOP 5

Notes: (1) When necessary, the Campus Preservation Officer may elevate any action for SHPO for additional consultation.
 (2) "Ground Disturbance" may accompany any of the other actions.

Case Study #1

FMD makes request to replace the windows at Moore College.

Location: University of Georgia, 108 Herty Drive
Athens Campus



Recommended Significant: Yes

Building Name:	Moore College
Building Number:	0025
Building Use:	Educational : Administration
Date of Construction:	1874
Construction Type:	Masonry Construction
Exterior Materials:	Stucco
Roof Type:	Mansard
Foundation Materials:	Brick
Windows:	Double Hung Sash

Notes: Nine bay façade with three center bays on pavilion. Center double doors with fanlight. Quoins. Hoods connected by a string course. Gabled dormers. Basement.

Construction financed with the city of Athens. The designer Professor Charbonnier, was a graduate of the French military school of St Cyr, and was professor of mathematics and engineering. Only permanent building constructed on campus between the end of the Civil War and the end of the century. Surroundings: campus. 3 bay side façade with new elevated entry on rear elevation. Concrete belt course at top of arched windows, with segmental detailing around arches. Concrete sills to arched windows. Tapered steps lead to central entry. Engraved keystone, states Moore College was gifted by the City of Athens in 1874.

Case Study #1

Athens Campus – Resources Assessment Summary					Draft - February 10, 2017
UGA Building No.	Historic Name	Date(s)	NR Designation	HPMP Assessment Category	Character Area
24	Meigs Hall	1905	NRe	1	1a North Campus
25	Moore College	1874-1876/2001	NR	2	1a North Campus
31	Candler Hall	1901/renovated 2003	NRe	1	1a North Campus
	Bernard Ramsey sculpture	Undetermined		Undetermined	1a North Campus
	Herty Field	1999		4	1a North Campus
	Harris terraces	1874-1875		2	1a North Campus
	Walks	Undetermined		Undetermined	1a North Campus
	Turf	Undetermined		Undetermined	1a North Campus
	Plantings	Undetermined		Undetermined	1a North Campus
20	Phi Kappa Hall	1834	NR	1	1b North Campus
21	Demosthenian Hall	1834	NR	2	1b North Campus
22	The Chapel	1832	NR	2	1b North Campus
23	Terrell Hall	1904		1	1b North Campus
30	New College	1823/1831	NR	2	1b North Campus
120	Holmes Hunter Academic Building	1831/1860/1905	NR	2	1b North Campus
130	Old College	1801-1805/renovated 1908/renovated 2006	NR	2	1b North Campus
631	Administration Building	1904		1	1b North Campus
632	Lustrat House	1847/ moved 1903	NR	2	1b North Campus
	Arch and fence	1858	NR	2	1b North Campus
	Bell tower	Undetermined		2	1b North Campus
	Sundial	Undetermined		Undetermined	1b North Campus
	Herbert B. Owens fountain	1989		4	1b North Campus
	Turf	Undetermined		2	1b North Campus
	Walks	Undetermined		2	1b North Campus
	Ornamental plantings	Undetermined		2	1b North Campus
	Historical marker	Undetermined		5	1b North Campus
	North Quadrangle	19th century	NR	2	1b North Campus

Case Study #1

SOP 8: Consult with Campus Preservation Officer

		ACTIONS							
		Master Planning	Routine Maintenance	Corrective Maintenance	Minor/Moderate Rehabilitation	Extensive Rehabilitation	Additions & New Construction	Demolition & Dispossession	Ground Disturbance
ASSESSMENTS	Category 1	SOP 8	If NO material or character altering change SOP 7 If material or character altering change SOP 8	SOP 8	SOP 8	SOP 6 SOP 9 SOP 10	SOP 5 SOP 6 SOP 9 SOP 10	SOP 6 SOP 9 SOP 10	SOP 5
	Category 2	SOP 8	If NO material or character altering change SOP 7 If material or character altering change SOP 8	If NO material or character altering change SOP 7 If material or character altering change SOP 8	SOP 8	SOP 6 SOP 9 SOP 10	SOP 5 SOP 6 SOP 9 SOP 10	SOP 6 SOP 9 SOP 10	SOP 5
	Category 3	SOP 8	SOP 7	SOP 7	If material or character altering change SOP 8	SOP 6 SOP 8	SOP 5 SOP 6 SOP 8	SOP 6 SOP 9 SOP 10	SOP 5
	Category 4	SOP 8	SOP 7	SOP 7	If material or character altering change SOP 8	SOP 6 SOP 8	SOP 5 SOP 6 SOP 8	SOP 6 SOP 9 SOP 10	SOP 5
	Category 5	NONE	NONE	NONE	NONE	NONE	NONE	NONE	SOP 6 SOP 9 SOP 10

Notes: (1) When necessary, the Campus Preservation Officer may elevate any action for SHPO for additional consultation.
 (2) "Ground Disturbance" may accompany any of the other actions.

Case Study #2

OUA requests demolition of the chemistry building addition.

Location: University of Georgia, 140 Cedar Street
Athens Campus

Recommended Significant: Yes



Building Name:	Chemistry
Building Number:	1001
Building Use:	Educational : Research facility
Date of Construction:	1960
Construction Type:	Metal frame
Exterior Materials:	Brick & cast concrete detail
Roof Type:	Flat
Foundation Materials:	Concrete block
Windows:	Pivotal sash

Notes: Complex plan with a series of attached asymmetrical wings
Largely brick veneer with concrete detail used to visually organize windows and stories.

Wings distinct in design, all use same organizational pattern

Abstract voussoirs drop down from belt courses to distinguish bays (without forming complete vertical line)

Entry block is 12 bays wide, indicated by each column of windows, three stories high

Thin concrete voussoirs placed vertically, unites horizontal bands running between windows

Brick is horizontal at window sides; rectangular concrete panel below windows; fixed rectangular window above panel and horizontal sash window at top

Case Study #2

Athens Campus – Resources Assessment Summary					Draft - February 10, 2017
UGA Building No.	Historic Name	Date(s)	NR Designation	HPMP Assessment Category	Character Area
271	Milledge Hall	1921/1938		2	13 Memorial Hall Quadrangle
280	Reed Hall	1953		2	13 Memorial Hall Quadrangle
670	Memorial Hall	1924		2	13 Memorial Hall Quadrangle
	Milledge Hall Quadrangle	Undetermined		Undetermined	13 Memorial Hall Quadrangle
2604	Legion Pool	1936		2	14 Legion Pool
2605	Legion Pool Service 1	1936		2	14 Legion Pool
290	Clarke Howell Hall	1936/1953		2	15 Clarke-Howell Complex
	Walks	Undetermined		Undetermined	15 Clarke-Howell Complex
	Plantings	Undetermined		Undetermined	15 Clarke-Howell Complex
	Turf	Undetermined		Undetermined	15 Clarke-Howell Complex
685	Sanford Stadium North Stands	1929/1967/ 1981		TAS	16 Sanford Stadium
686	Sanford Stadium South Stands	1929/1967/ 1982		TAS	16 Sanford Stadium
694	Stadium Dressing Rooms	1971		TAS	16 Sanford Stadium
	Hedges	Undetermined		Undetermined	16 Sanford Stadium
	Bust of Steadman Sanford	Undetermined		Undetermined	16 Sanford Stadium
	Bulldog mascot burial ground	Undetermined		Undetermined	16 Sanford Stadium
	Field	Undetermined		Undetermined	16 Sanford Stadium
	Park features	Undetermined		Undetermined	17 People's Park
	Arboretum plantings	Undetermined		Undetermined	18 Arboretum (Lumpkin's Woods)
	Trolley shelter	ca. 1930s		2	18 Arboretum (Lumpkin's Woods)
1000	Biological Science	1957/?		2	19 Mid-century Science Complex
1001	Chemistry	1960/1971		2	19 Mid-century Science Complex

Case Study #2

- SOP 5: Archaeology
- SOP 6: Conduct a Historic Resource Study
- SOP 9: Consult with State Historic Preservation Office
- SOP 10: Mitigation (if required)

ACTIONS

	Master Planning	Routine Maintenance	Corrective Maintenance	Minor/Moderate Rehabilitation	Extensive Rehabilitation	Additions & New Construction	Demolition & Dispossession	Ground Disturbance
Category 1	SOP 8	If NO material or character altering change SOP 7 If material or character altering change SOP 8	SOP 8	SOP 8	SOP 6 SOP 9 SOP 10	SOP 5 SOP 6 SOP 9 SOP 10	SOP 6 SOP 9 SOP 10	SOP 5
Category 2	SOP 8	If NO material or character altering change SOP 7 If material or character altering change SOP 8	If NO material or character altering change SOP 7 If material or character altering change SOP 8	SOP 8	SOP 6 SOP 9 SOP 10	SOP 5 SOP 6 SOP 9 SOP 10	SOP 6 SOP 9 SOP 10	SOP 5
Category 3	SOP 8	SOP 7	SOP 7	If material or character altering change SOP 8	SOP 6 SOP 8	SOP 5 SOP 6 SOP 8	SOP 6 SOP 9 SOP 10	SOP 5
Category 4	SOP 8	SOP 7	SOP 7	If material or character altering change SOP 8	SOP 6 SOP 8	SOP 5 SOP 6 SOP 8	SOP 6 SOP 9 SOP 10	SOP 5
Category 5	NONE	NONE	NONE	NONE	NONE	NONE	SOP 6 SOP 9 SOP 10	SOP 5

ASSESSMENTS

Notes: (1) When necessary, the Campus Preservation Officer may elevate any action for SHPO for additional consultation.
 (2) "Ground Disturbance" may accompany any of the other actions.

Case Study #3

OUA proposes extensive rehabilitation of the “Mule Barn” at UGA Griffin.

Experiment Station: Georgia Experiment Station,
Griffin



Recommended Significant: Yes

Building Name: Mule Barn
Building Number: 4405
Building Use: Agricultural
Date of Construction: 1920
Construction Type: Concrete
Exterior Materials: N/A
Roof Type: Gable
Foundation Materials: Not visible
Windows: 1/1 dhs, 6/6 dhs

Notes: Two stories. Poured concrete over rebar construction, walls approximately 8 inches thick. Small windows along side elevations, either 1/1 dhs or covered by wooden shutters. Weatherboard and 6/6 dhs windows in gable ends. Doors on gable ends replaced with metal roll doors. Interior altered/divided up to create storage space. Use to house mules.

Case Study #3

Griffin Campus – Resources Assessment Summary					Draft - February 10, 2017
UGA Building No.	Historic/Current Name	Date(s)	NR Status	HPMP Assessment Category	Character Area
4486	Visitor Housing (former Director's residence)	1948		2	Historic Campus Entry
	Entry gate	by 1928		2	Historic Campus Entry
	Foundation	By 1954		Undetermined	Historic Campus Entry
	Turf and plantings	Undetermined		Undetermined	Historic Campus Entry
	Fence	post-2002		5	Historic Campus Entry
	Identity sign	post-2002		5	Historic Campus Entry
	Georgia Historical Marker	1966		3	Historic Campus Entry
	Access road	post-2002		5	Contemporary Entrance and Parking
	Visitor parking	post-2002		5	Contemporary Entrance and Parking
	Sidewalk	post-2002		5	Contemporary Entrance and Parking
4416	Flynt Building	1928		1	Historic Academic Core
4482	Stuckey Conference Center	1954		2	Historic Academic Core
4413	Cowart Building	1948		2	Historic Academic Core
4405	Mule Barn	1912		1	Historic Academic Core
4414	Research Services Building and Dairy Barn	1912; addition 1940		1	Historic Academic Core
4417	Biological Agricultural Engineering (BAE) Building	1952		2	Historic Academic Core
4408	Sanford Barn	1938		1	Historic Academic Core
4419	Gin and Shop Building	circa 1938		1	Historic Academic Core
4401	Agricultural Engineering and Plant Operations Shop	1957		2	Historic Academic Core
4426	Stress Physiology Building	1940		2	Historic Academic Core
4442	Plant Introduction Greenhouse and Headhouse	1966 or earlier		2	Historic Academic Core
4480	Micronutrient Research Building	1971		3	Historic Academic Core
4403	Metabolism Barn	1938-1957		2	Historic Academic Core
4415	Forage Dryer	1957-1962		2	Historic Academic Core
4441	Grain Forage Greenhouse and Headhouse	1954-1962		2	Historic Academic Core
4446	Turf Science Building	by 1975		4	Historic Academic Core
4421	Entomology and Horticultural Greenhouse and Headhouse	1957		2	Historic Academic Core
4461	Horticultural Greenhouse	1971		3	Historic Academic Core
4445	Pathology Greenhouse	1962		2	Historic Academic Core
4457	S-9 Lab Building	1969		3	Historic Academic Core

Case Study #3

- SOP 5: Archaeology
- SOP 6: Conduct a Historic Resource Study
- SOP 9: Consult with State Historic Preservation Office
- SOP 10: Mitigation (if required)

ACTIONS

		Master Planning	Routine Maintenance	Corrective Maintenance	Minor/Moderate Rehabilitation	Extensive Rehabilitation	Additions & New Construction	Demolition & Dispossession	Ground Disturbance
ASSESSMENTS	Category 1	SOP 8	If NO material or character altering change SOP 7 If material or character altering change SOP 8	SOP 8	SOP 8	SOP 6 SOP 9 SOP 10	SOP 5 SOP 6 SOP 9 SOP 10	SOP 6 SOP 9 SOP 10	SOP 5
	Category 2	SOP 8	If NO material or character altering change SOP 7 If material or character altering change SOP 8	If NO material or character altering change SOP 7 If material or character altering change SOP 8	SOP 8	SOP 6 SOP 9 SOP 10	SOP 5 SOP 6 SOP 9 SOP 10	SOP 6 SOP 9 SOP 10	SOP 5
	Category 3	SOP 8	SOP 7	SOP 7	If material or character altering change SOP 8	SOP 6 SOP 8	SOP 5 SOP 6 SOP 8	SOP 6 SOP 9 SOP 10	SOP 5
	Category 4	SOP 8	SOP 7	SOP 7	If material or character altering change SOP 8	SOP 6 SOP 8	SOP 5 SOP 6 SOP 8	SOP 6 SOP 9 SOP 10	SOP 5
	Category 5	NONE	NONE	NONE	NONE	NONE	NONE	SOP 6 SOP 9 SOP 10	SOP 5

Notes: (1) When necessary, the Campus Preservation Officer may elevate any action for SHPO for additional consultation.
 (2) "Ground Disturbance" may accompany any of the other actions.

Conclusion

- Compliance with State Stewardship Law
- Current and complete inventory
- Database of all known historic resources
- Clear and transparent process

Next Steps

- Complete Final Draft to integrate BOR and SHPO Review Comments
- Rollout and Implementation
- Continue editing and refinement of the database
- Web Site/GIS integration
 - Interactive Campus Map
 - Archeological Shape Files GIS
- Refine Archeology Protocol (learning curve)

Questions and Comments